



**1155 Business Center Drive
Horsham, PA 19044 - Bldg. 15**

**Sublease
Available**

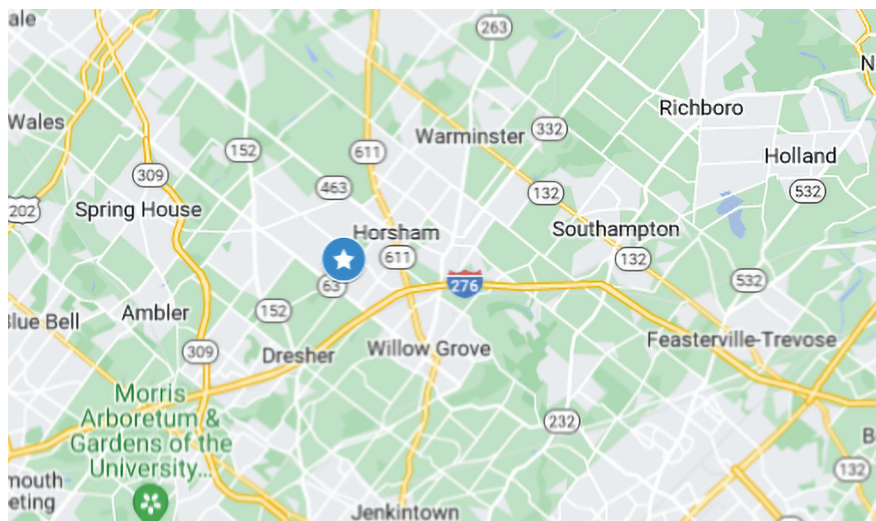
Space Profile

Premises	Bldg. 15, Suite 160
RSF	2,238
Rental Rate	\$19.50 + electric
Availability	Immediate
Term	Through 3-31-26
Submarket	Horsham/Willow Grove
Parking	4/1,000 RSF

Features

- Furniture available
- Convenient, accessible location within minutes of PA Turnpike
- Property Manager on site
- Fortune 100 sublandlord
- Multiple public transit stops within the Horsham Business Center
- No business privilege or occupational tax
- Adjacent to childcare facility
- Direct access to network of on-site walking trails

Map



For More Information

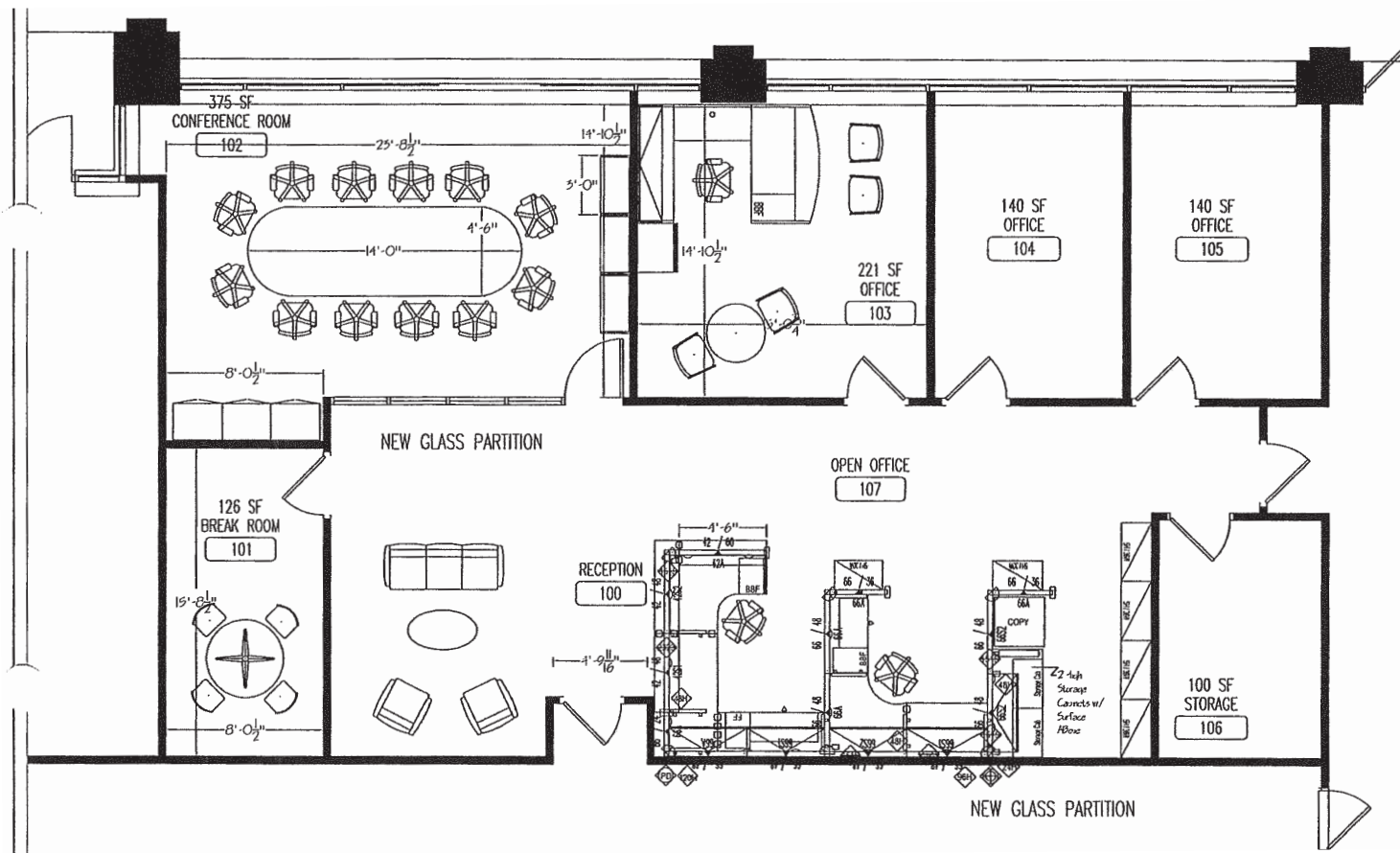
1 Fayette Street
Suite 100
Conshohocken, PA 19428
Phone: 610.825.3939
Fax: 610.825.2928



Ted Garrity
610.825.9618
tgarrity@cresa.com

www.cresa.com/philadelphia-pa

Floor Plan:





**1155 Business Center Drive
Horsham, PA 19044 – Bldg. 15**



cresa . . .

Cresa © 2023. All rights reserved. The information contained in this document has been obtained from sources believed reliable. While Cresa does not doubt its accuracy, Cresa has not verified it and makes no guarantee, warranty, or representation about it. It is your responsibility to independently confirm its accuracy and completeness. Any projections, opinions, assumptions or estimates used are for example only and do not represent the current or future performance of the property. The value of this transaction to you depends on tax and other factors which should be evaluated by your tax, financial and legal advisors. You and your advisors should conduct a careful, independent investigation of the property to determine to your satisfaction the suitability of the property for your needs.