



Sublease Available

120 Wall Street

New York, NY 10005

Overview:

Available: Partial 20th Floor

Size: 8,099 SF

Term: Flexible

Rental Rate: Upon Request

Building Class: Class A Office

Highlights:

- Space is furnished
- Space is wired
- Desirable building
- Great views

For more information:

Nick Markel

nmarkel@cresa.com

212.687.4501 direct

914.980.3634 mobile

Gregg Cohen

gcohen@cresa.com

212.687.4329 direct

917.684.1764 mobile

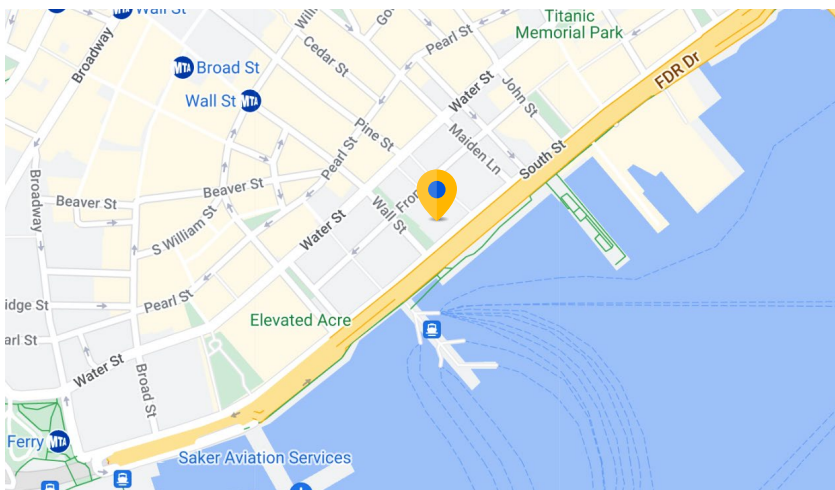
Marcus Craddock

mcraddock@cresa.com

240.372.7079 mobile

Cresa

1133 Avenue of the Americas, 29th Floor
New York, NY 10036



Even though obtained from sources deemed reliable, no warranty or representation, express or implied, is made as to the accuracy of the information herein, and it is subject to errors, omissions, change of price, rental or other conditions, withdrawal without notice, and to any special listing conditions imposed by our principals.

120 Wall Street

New York, NY 10005

Partial 20th Floor: 8,099 SF



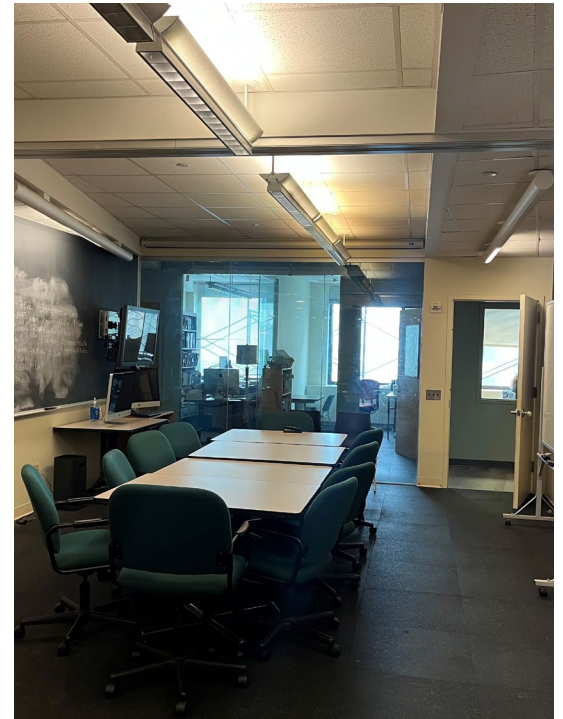
Even though obtained from sources deemed reliable, no warranty or representation, express or implied, is made as to the accuracy of the information herein, and it is subject to errors, omissions, change of price, rental or other conditions, withdrawal without notice, and to any special listing conditions imposed by our principals.

Sublease Available

cresa

120 Wall Street New York, NY 10005

Partial 20th Floor: 8,099 SF



Even though obtained from sources deemed reliable, no warranty or representation, express or implied, is made as to the accuracy of the information herein, and it is subject to errors, omissions, change of price, rental or other conditions, withdrawal without notice, and to any special listing conditions imposed by our principals.