

Sale or Lease



5345 Truman Dr

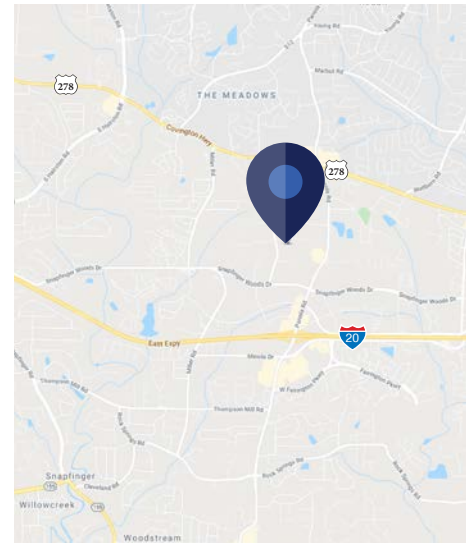
Decatur, GA 30035

Property Profile

| | |
|---|-----------------------------|
| Total SF | 54,000 SF |
| Office SF | 10,800 SF |
| Acres | 3.5 Acres |
| Asking Price | Call for Asking Price |
| Legal Description | Parcel No. 16 040 01 019 |
| Construction | Metal Building & Roof |
| Dock High | 7 |
| Drive In | 2 Oversized |
| Zoning | M |
| Year Built/ Renovated-Expanded | 1973/1985 |

Features:

- Up to 16' clear height
- Fenced outside storage
- 1,200 amps, 208 3-phase power
- 105' truck court depth
- 2 gantry cranes, 2 ton each
- Column spacing is 25'X60'
- Sprinklers, wet system

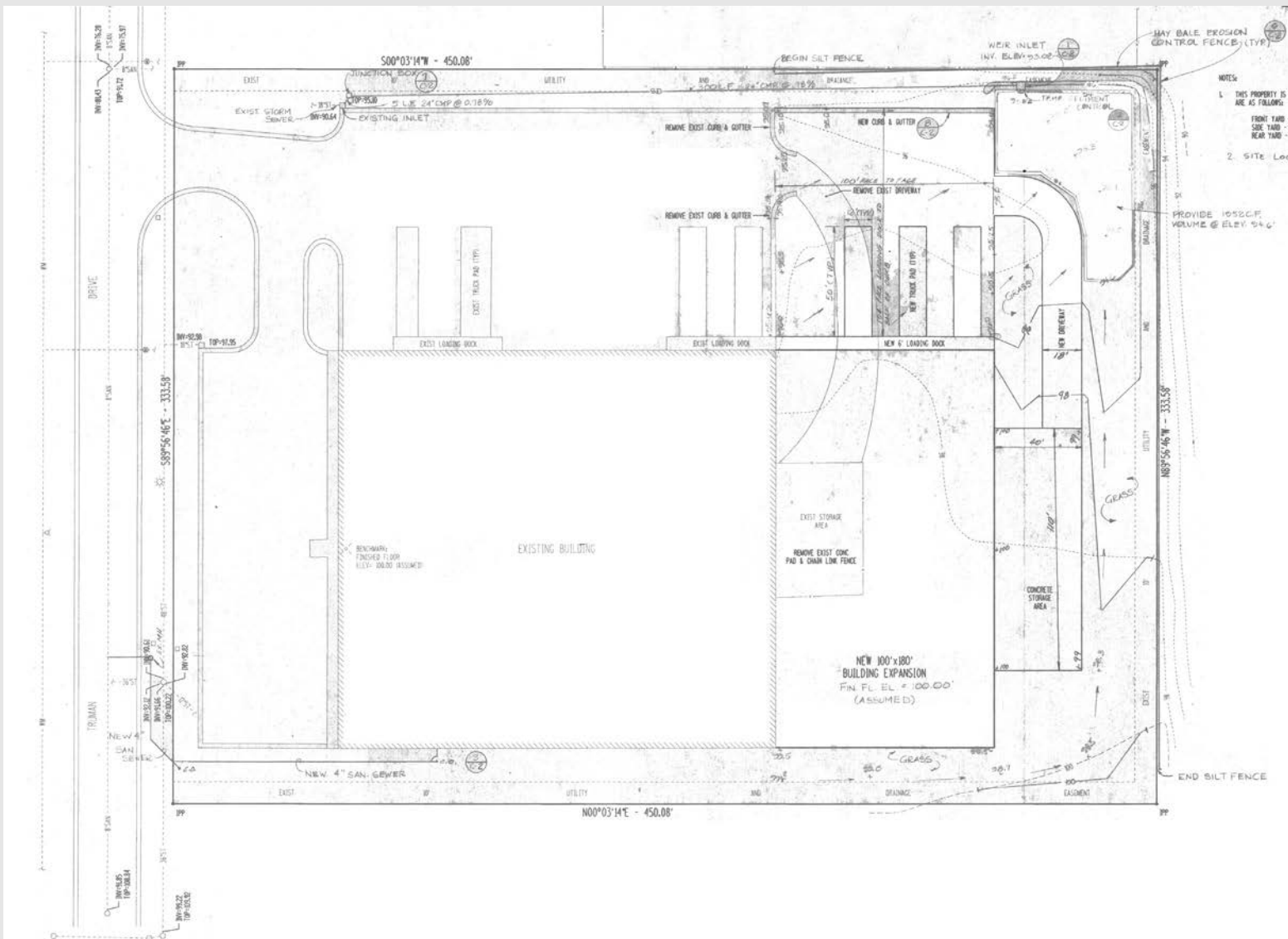


Contact:



Scott Hardeman
404.446.1863
shardeman@cresa.com

Site Plan



5345 Truman Dr
Decatur, GA 30035

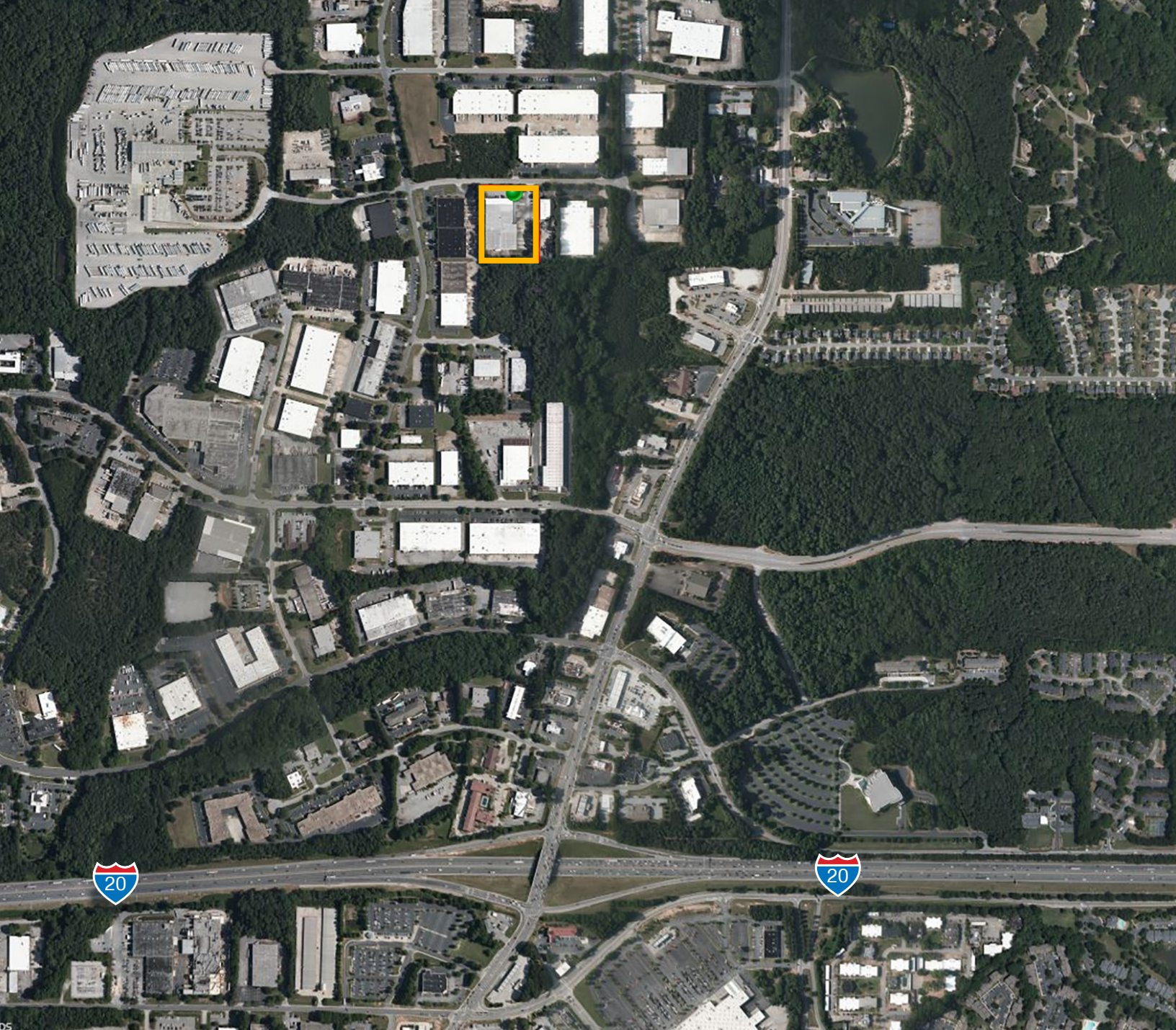
Contact:



Scott Hardeman
404.446.1863
shardeman@cresa.com

cresa

Cresa © 2019. All rights reserved. The information contained in this document has been obtained from sources believed reliable. While Cresa does not doubt its accuracy, Cresa has not verified it and makes no guarantee, warranty, or representation about it. It is your responsibility to independently confirm its accuracy and completeness. Any projections, opinions, assumptions or estimates used are for example only and do not represent the current or future performance of the property. The value of this transaction to you depends on tax and other factors which should be evaluated by your tax, financial and legal advisors. You and your advisors should conduct a careful, independent investigation of the property to determine to your satisfaction the suitability of the property for your needs.



**5345 Truman Dr
Decatur, GA 30035**

Contact:



Scott Hardeman
404.446.1863
shardeman@cresa.com



Cresa © 2019. All rights reserved. The information contained in this document has been obtained from sources believed reliable. While Cresa does not doubt its accuracy, Cresa has not verified it and makes no guarantee, warranty, or representation about it. It is your responsibility to independently confirm its accuracy and completeness. Any projections, opinions, assumptions or estimates used are for example only and do not represent the current or future performance of the property. The value of this transaction to you depends on tax and other factors which should be evaluated by your tax, financial and legal advisors. You and your advisors should conduct a careful, independent investigation of the property to determine to your satisfaction the suitability of the property for your needs.