

Sublease



Cumberland Center IV

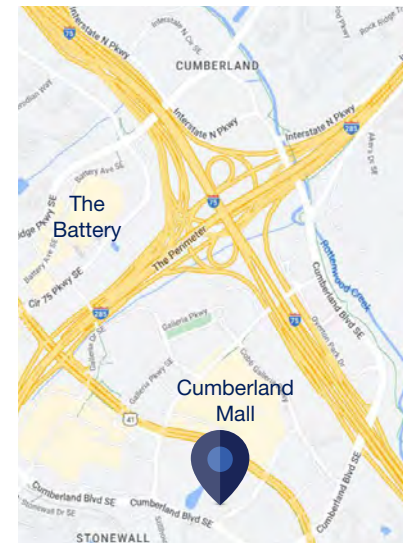
3225 Cumberland Blvd SE
Atlanta, GA 30339

Space Profile:

| | |
|-----------------------|----------------------------|
| Premises | Suite 500 |
| RSF | 5,820 RSF |
| Rental Rate | \$23.00 FSG |
| Availability | Immediate |
| Remaining Term | December 31, 2025 |
| Building Class | A |
| Year Built | 1998 |
| Parking | 4.10/1000 Free, covered |

Features:

- Furniture available
- 24 Hour Access
- Fitness Center
- Banking
- Property Manager on Site
- Cafe
- Conferencing Facility
- Convenience Store
- Walkable to restaurants at Mall
- Close to the "Battery"



Contact:

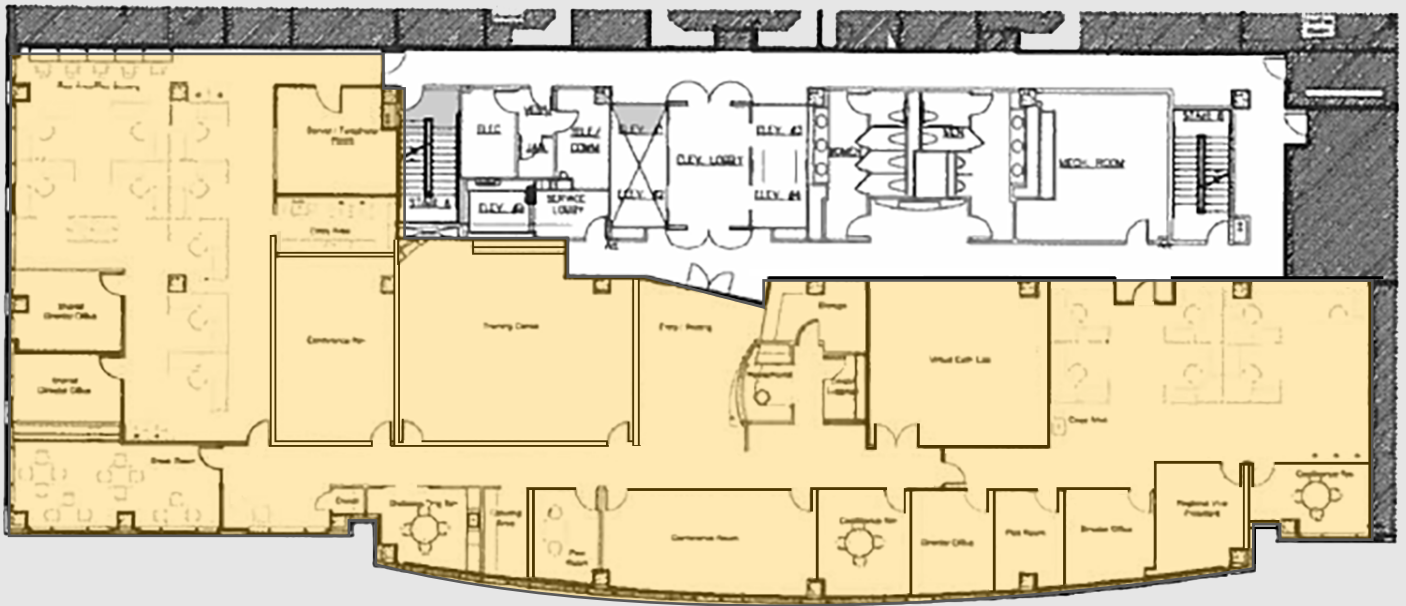


Brooks Morris
424.400.9554
bmorris@cresa.com



Cumberland Center IV

3225 Cumberland Blvd SE



Cresa © 2019. All rights reserved. The information contained in this document has been obtained from sources believed reliable. While Cresa does not doubt its accuracy, Cresa has not verified it and makes no guarantee, warranty, or representation about it. It is your responsibility to independently confirm its accuracy and completeness. Any projections, opinions, assumptions or estimates used are for example only and do not represent the current or future performance of the property. The value of this transaction to you depends on tax and other factors which should be evaluated by your tax, financial and legal advisors. You and your advisors should conduct a careful, independent investigation of the property to determine to your satisfaction the suitability of the property for your needs.



Cumberland Center IV

3225 Cumberland Blvd SE



cresa . . .

Cresa © 2019. All rights reserved. The information contained in this document has been obtained from sources believed reliable. While Cresa does not doubt its accuracy, Cresa has not verified it and makes no guarantee, warranty, or representation about it. It is your responsibility to independently confirm its accuracy and completeness. Any projections, opinions, assumptions or estimates used are for example only and do not represent the current or future performance of the property. The value of this transaction to you depends on tax and other factors which should be evaluated by your tax, financial and legal advisors. You and your advisors should conduct a careful, independent investigation of the property to determine to your satisfaction the suitability of the property for your needs.