



Multi-Floor Sublease Opportunity

100 Westminster Street

Providence, Rhode Island

Space Profile

| | |
|-----------------------|---|
| Floors | 3, 4, 9, 18, 19 |
| Size | 5,949 - 20,518 SF (see Space Breakdown) |
| Rental Rate | Negotiable |
| Availability | Immediate |
| Term | Through 10/31/2026 |
| Building Class | A |
| Submarket | Providence |
| Built | 1983, Floors 19 & 20 Renovated 2023 |
| Parking | 0.26/1,000 SF |

Sublease Features

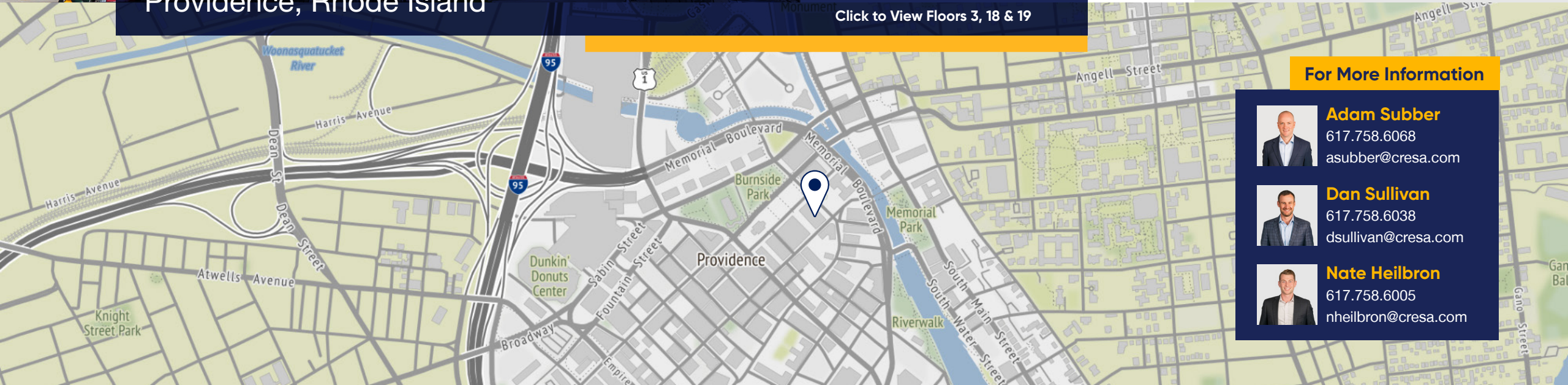
- 24-hour building security
- Underground garage parking
- On-site restaurants and retail
- Attached boutique hotel
- Furniture available

Space Breakdown

- **Floor 3:** 5,949 SF
- **Floor 4:** 11,247 SF
- **Floor 9:** 19,181 SF
- **Floor 18:** 20,518 SF
- **Floor 19:** 16,661 SF



Click to View Floors 3, 18 & 19



For More Information



Adam Subber
617.758.6068
asubber@cresa.com



Dan Sullivan
617.758.6038
dsullivan@cresa.com



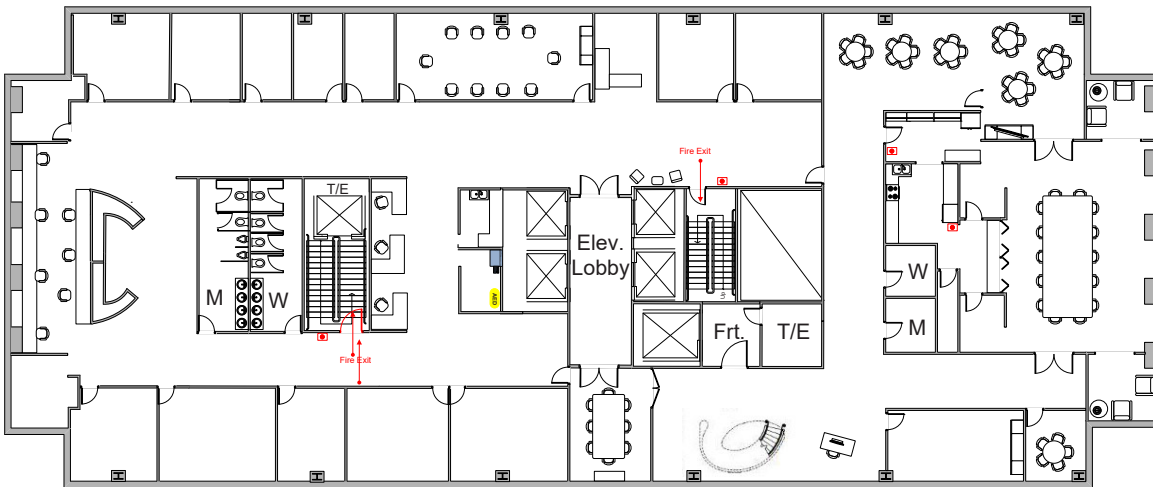
Nate Heilbron
617.758.6005
nheilbron@cresa.com

100 Westminster Street

Floor 19: 16,661 SF

19th Floor Features

- Professional kitchen
- Large boardroom
- Internal stair connects to 20th floor mezzanine space



100 Westminster Street

Floor 18: 20,518 SF

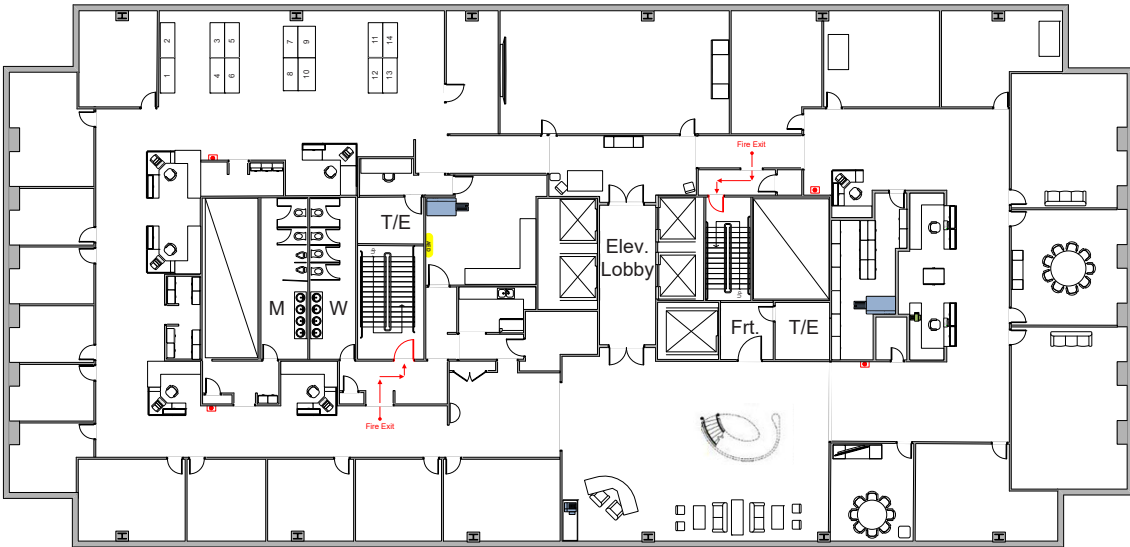


18th Floor Features

- Large private offices
- Large conference room
- Internal stair connects to 19th floor office space



cresa



100 Westminster Street

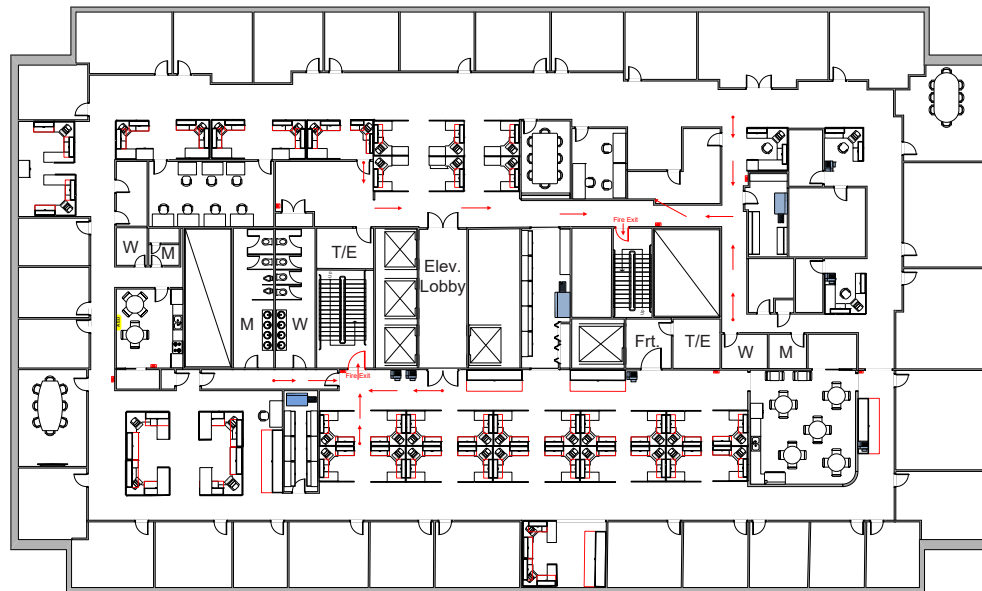
Floor 9: 19,181 SF



Click to View Floor 9



cresa



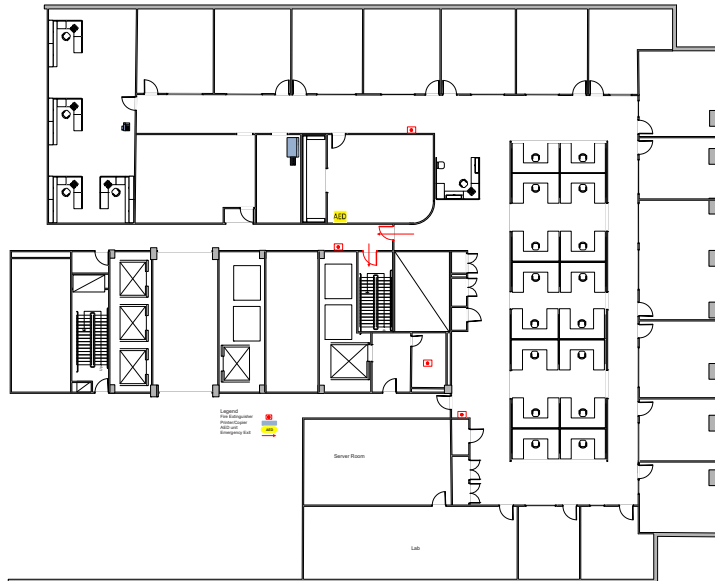
100 Westminster Street

Floor 4: 11,247 SF



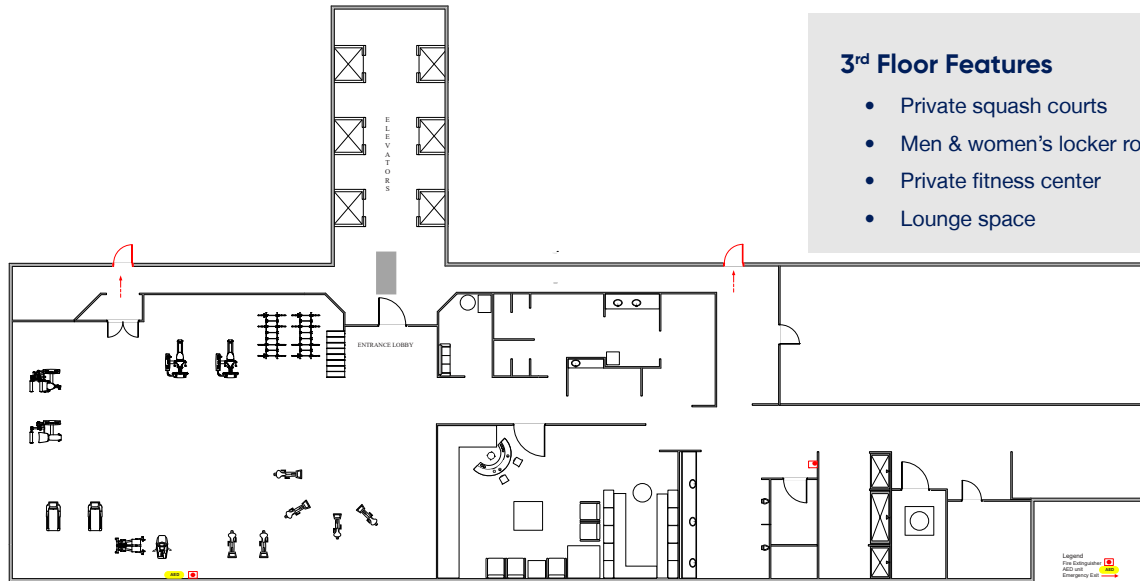
Virtual Tour

Click to View Floor 4



100 Westminster Street

Floor 3: 5,949 SF



3rd Floor Features

- Private squash courts
- Men & women's locker rooms
- Private fitness center
- Lounge space

