

FOR LEASE

2 Acres of Graded, Graveled Yard

Stoney Trail

84th Street

61 Avenue

Range Road 285

SUBJECT PROPERTY

Wrangler Road

Glenmore Trail

243085 Wrangler Road, Rocky View County

Opportunity to lease land ideally suited for storage use that is in close proximity to industrial parks on the east side of the city.

Contact:

Austin Leclerc
403.690.2001
aleclerc@cresa.com

David Miles
403.809.5859
dmiles@cresa.com



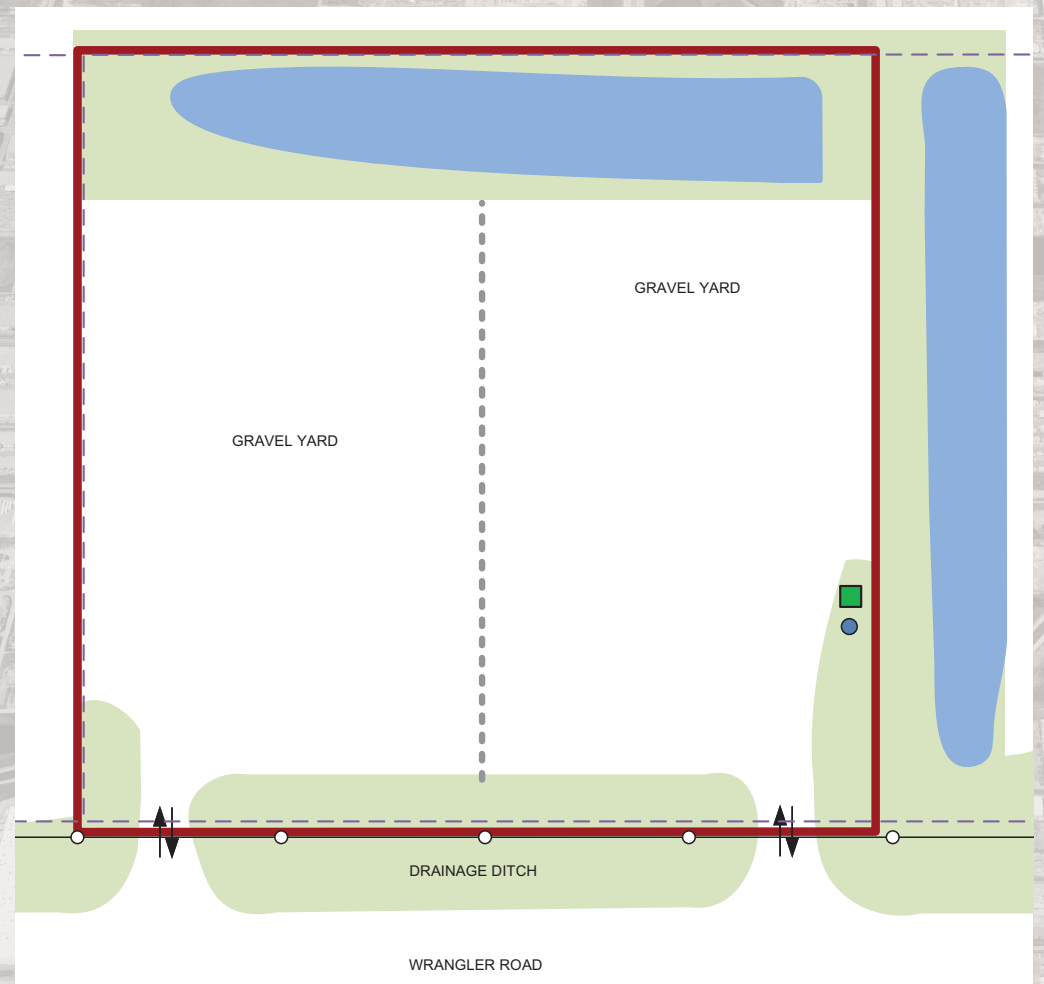
243085 WRANGLER ROAD

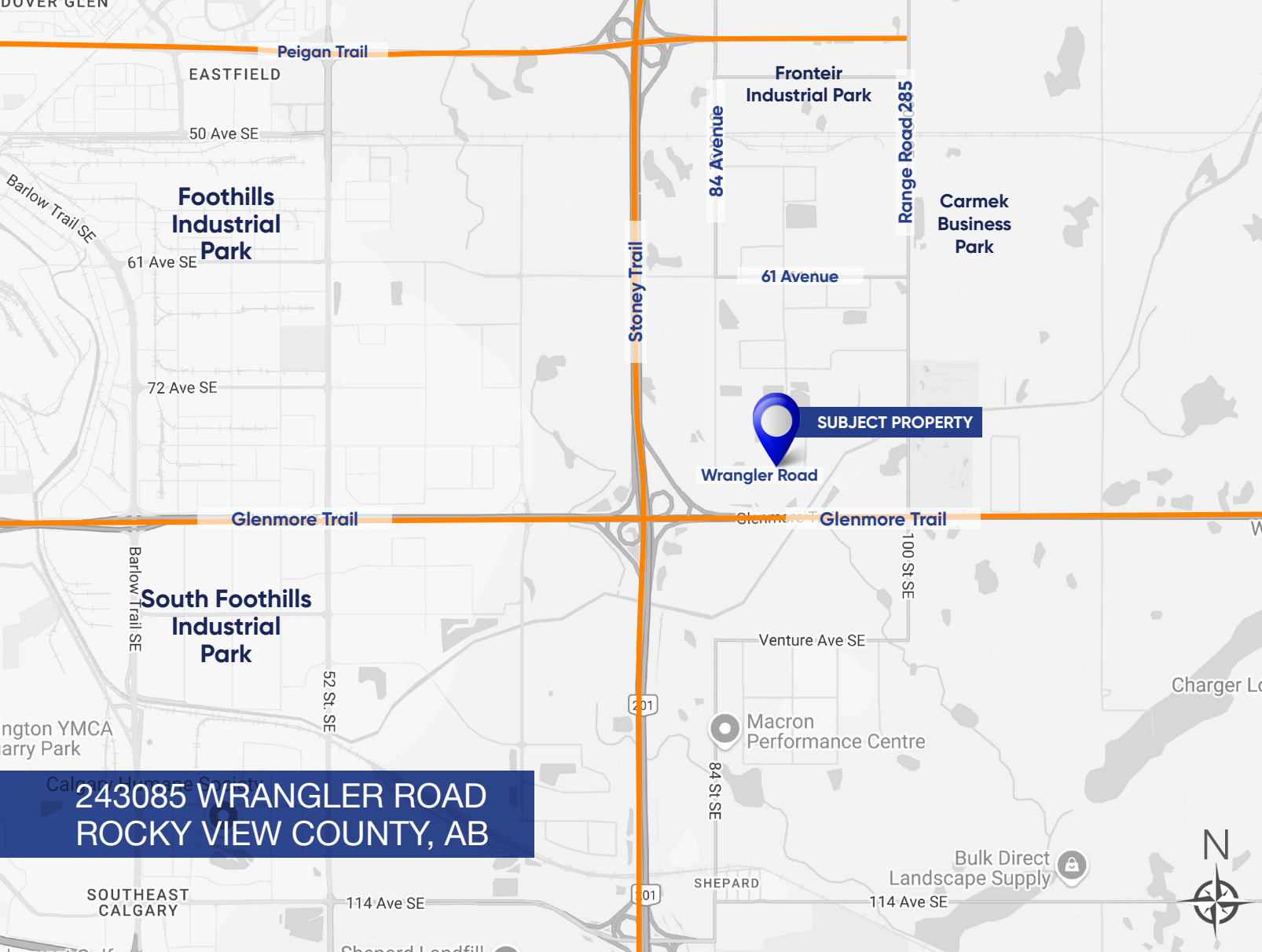
Property Profile

Site Size:	±2 acres Option to lease only 1 acre if preferred
Available:	Immediately
Term:	3 years
Asking Rate:	\$4,500.00 gross, per month per acre
Zoning:	C-LRDs h18 (Commercial, Local Rural District)
Services:	Electricity available
Yard:	Compact gravel
Fenced & Secure:	Yes
Lighting:	No

Property Highlights

- Graded and graveled yard ideal for companies requiring additional storage including paving, fencing, equipment and transportation companies.
- Easy access to the site directly off of Wrangler Road.
- 10 minute drive to Stoney Trail, Glenmore Trail via 84th Street or Range Road 285.
- Close proximity to Foothills and South Foothills Industrial Parks to the west in Calgary and Frontier Industrial Park and Carmek Business Park north east of the site.





Area Description

The site is conveniently located in Rocky View County to the east of the City of Calgary. Well located within several industrial parks and ideal for a variety of companies requiring additional off-site storage.

Rocky View County all around the city has been and continues to be a rapidly growing area for industrial development and growth. Easy access to major arteries makes the area attractive and convenient for several uses.

Contact

Austin Leclerc
403.690.2001
aleclerc@cresa.com

David Miles
403.809.5859
dmiles@cresa.com

324 - 8 Avenue SW, Suite 1550 | Calgary, AB T2P 2Z2 | 403.571.8080 cresa.com

Even though obtained from sources deemed reliable, no warranty or representation, express or implied, is made as to the accuracy of the information herein, and it is subject to errors, omissions, change of price, rental or other conditions, withdrawal without notice, and to any special listing conditions imposed by our principals.

cresa