

Edinburgh Place

5,812 sf for Lease



VIEW THE
VIRTUAL TOUR **360**

Damon Harmon, CPA, CGA
403.875.3133
dharmon@cresa.com

Saige Clarke
587.438.2109
sclarke@cresa.com

cresa

Edinburgh Place



**5,812 sf available
immediately**

Space Profile

Premises:	Suite A: 3,952 sf Suite B: 1,860 sf Total: 5,812 sf
Availability:	Immediately
Term:	Flexible
Rental Rate:	Gross rates
T.I.A.:	As-is
Op. Costs & Taxes:	\$12.28 per sf (est. 2023)
Parking:	1 stall at market rates



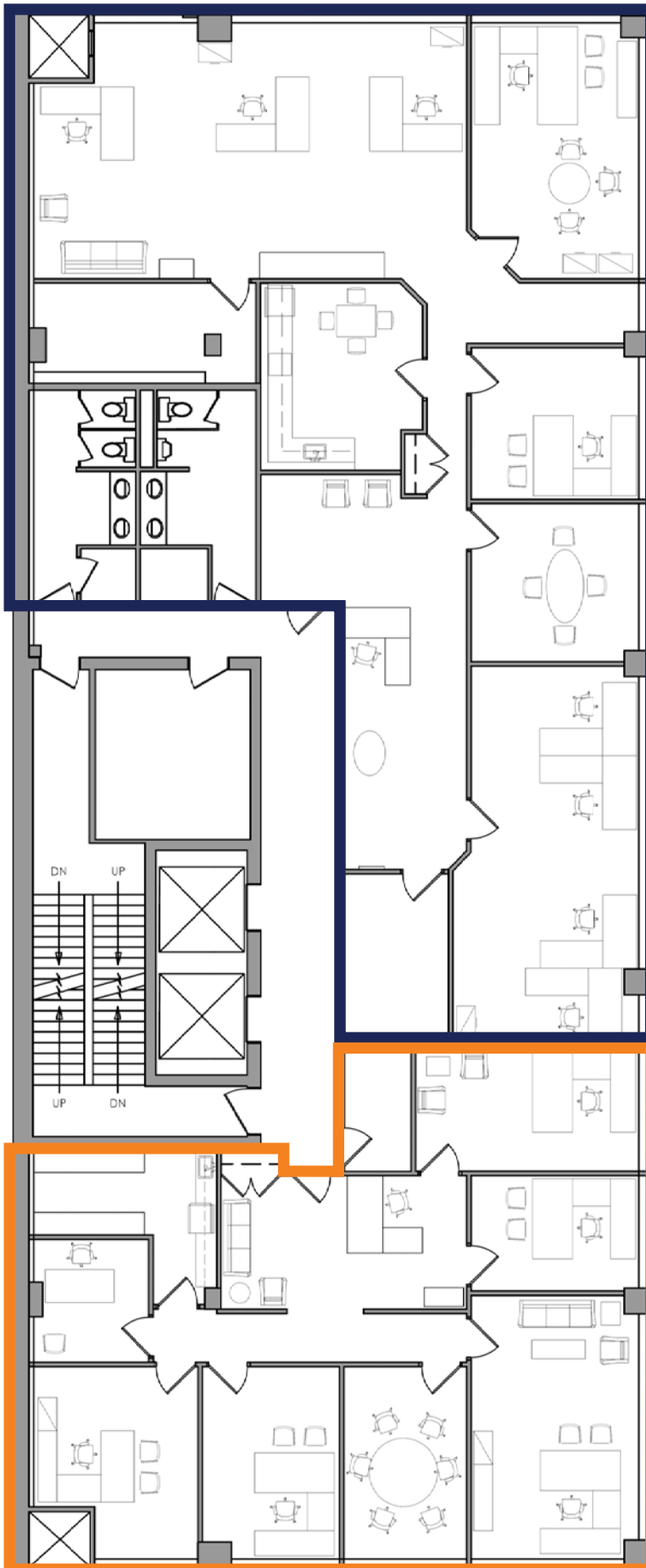
Building Information

Address:	900 Sixth Avenue SW
Year of Completion:	1980
Number of Floors:	10
Rentable Area:	52,000 sf
Average Floor plate:	5,625 sf
Landlord/ Building Manager:	Amhurst Property Management

Features & Amenities

- Floor is currently demised into two separate suites
- Exposure to an abundance of natural light
- Full floor opportunity
- Furniture is available
- Walking distance to Bow River pathway system
- Half a block to Plus 15 access
- Two blocks to LRT

Edinburgh Place



3rd Floor 5,812 sf, total

Suite A: 3,952 sf

2 perimeter offices

2 large open areas for
workstations

Meeting room

Reception

Kitchen/staff room

Storage/filing

Suite B: 1,860 sf

6 perimeter offices

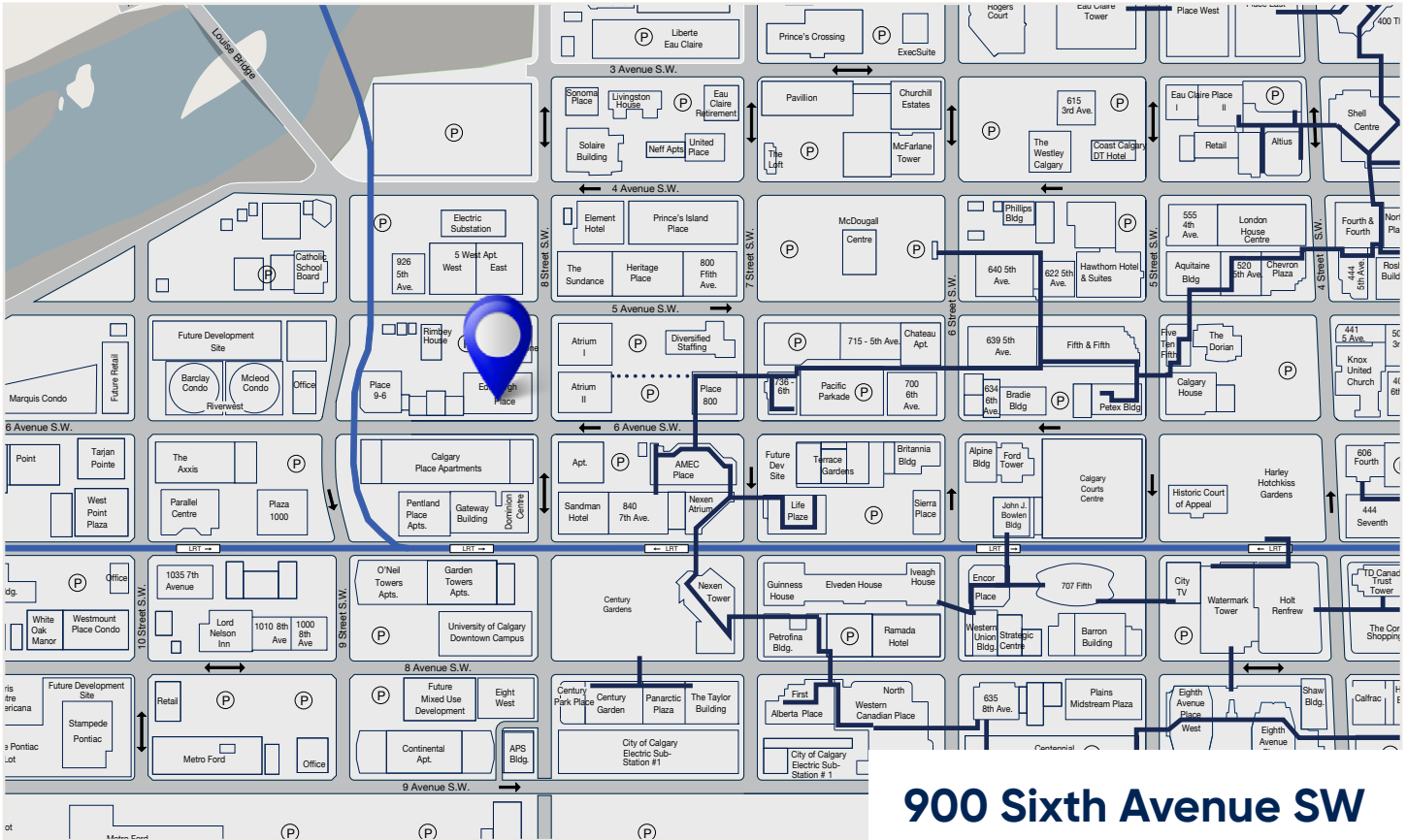
Meeting room

Reception

Kitchen/storage



Edinburgh Place



900 Sixth Avenue SW



Agent Information

Damon Harmon, CPA, CGA
403.875.3133
dharmon@cresa.com

Saige Clarke
587.438.2109
sclarke@cresa.com

Cresa

324 - 8 Avenue SW, Suite 1550 | Calgary, AB T2P 2Z2 | 403.571.8080 cresa.com

Even though obtained from sources deemed reliable, no warranty or representation, express or implied, is made as to the accuracy of the information herein, and it is subject to errors, omissions, change of price, rental or other conditions, withdrawal without notice, and to any special listing conditions imposed by our principals.

