



**Sublease Available**

# 1450 American Lane

## Schaumburg, IL 60173

### Overview

Building:	Schaumburg Tower II
Premises:	4,026 SF
Term:	Through 10/31/27
Available:	immediately
Rental Rate:	Negotiable
Building Class:	Class A Office
Parking:	3.88/1,000 SF
Furniture:	Furniture available (plug & play)
Space:	Suite 675

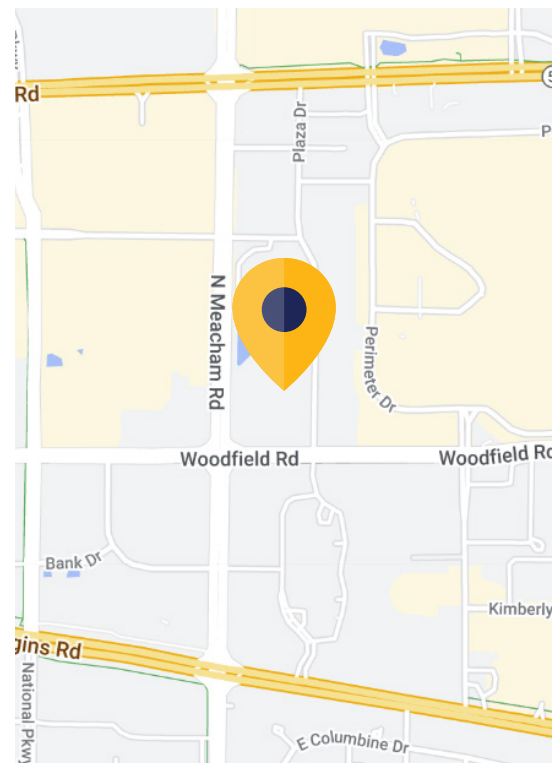
### For more information:



**Rick Morris**  
630.248.9560 mobile  
rmorris@cresa.com



**Lee Stephens**  
224.489.1885 mobile  
lstephens@cresa.com





Sublease Available

cresa

# 1450 American Lane

Schaumburg, IL 60173

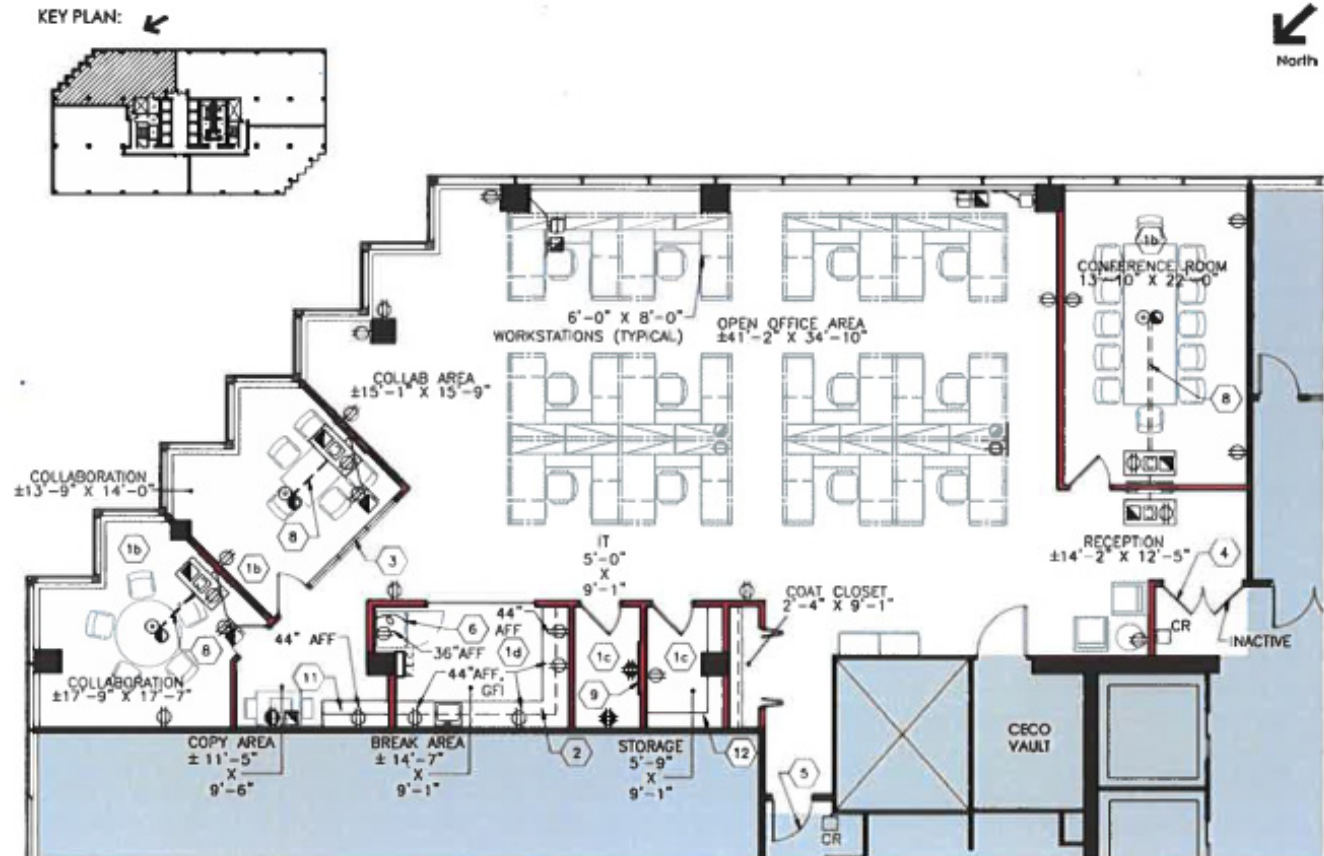


Sublease Available

cresa

# 1450 American Lane

Schaumburg, IL 60173



cresa

Cresa © 2024. All rights reserved. The information contained in this document has been obtained from sources believed reliable. While Cresa does not doubt its accuracy, Cresa has not verified it and makes no guarantee, warranty, or representation about it. It is your responsibility to independently confirm its accuracy and completeness. Any projections, opinions, assumptions or estimates used are for example only and do not represent the current or future performance of the property. The value of this transaction to you depends on tax and other factors which should be evaluated by your tax, financial and legal advisors. You and your advisors should conduct a careful, independent investigation of the property to determine to your satisfaction the suitability of the property for your needs.