

cresa

Advanced Manufacturing Facility for Sublease

2233 4TH ST
BERKELEY, CA

7,957 RSF Available
Available January 1st

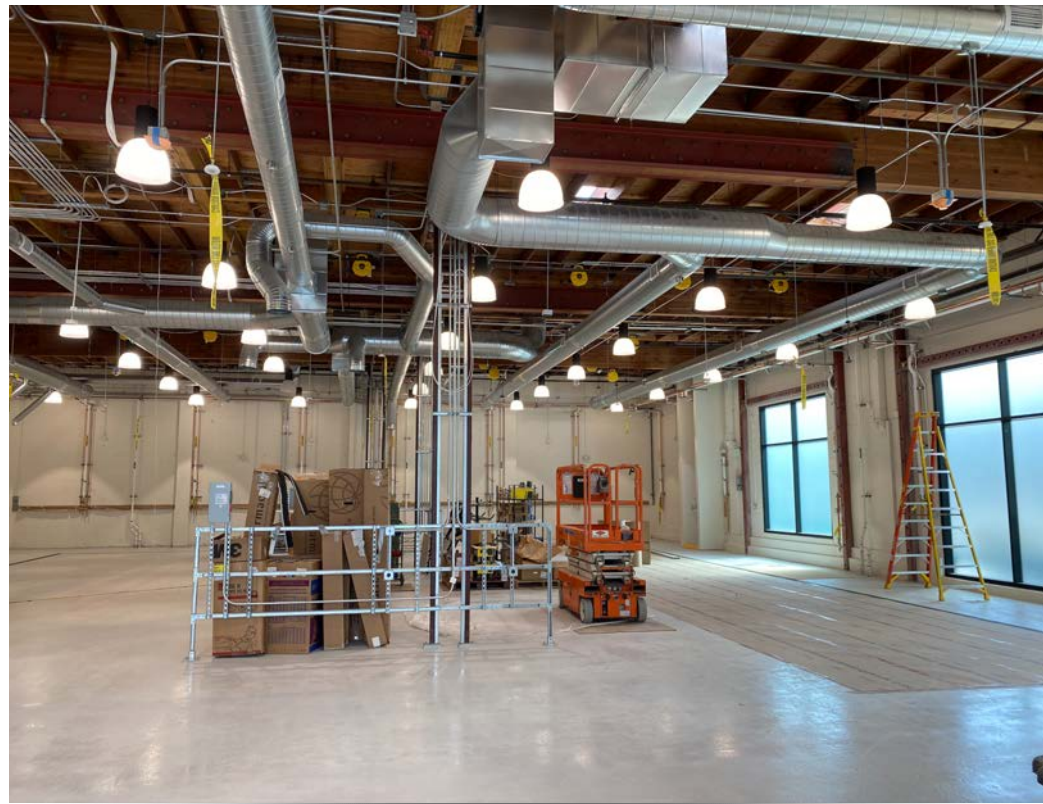
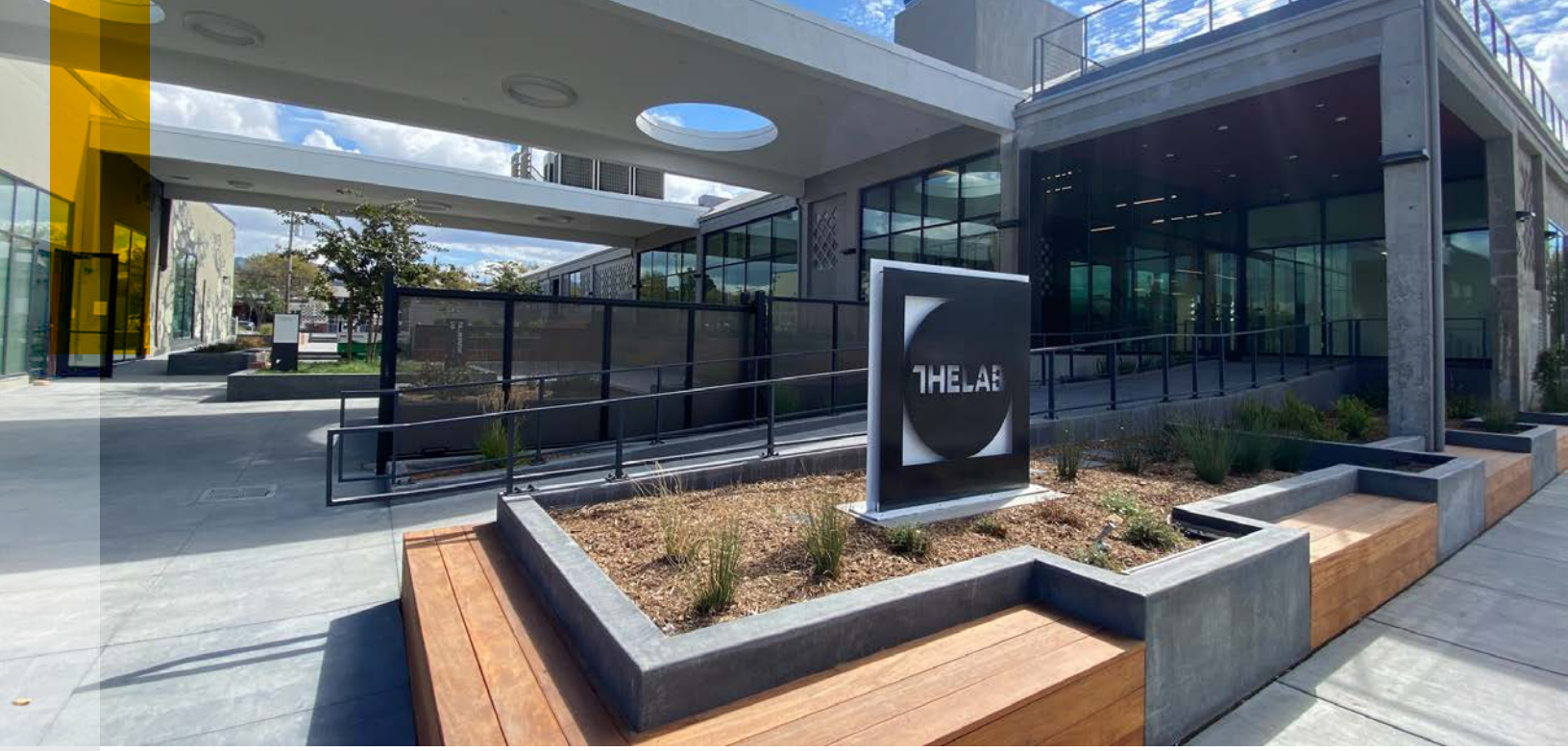


Matt Elmquist

510.851.2004
melmquist@cresa.com
BRE #01230052

Deke Douty

714.345.7058
ddouty@cresa.com
BRE #0212059



cresa

Matt Elmquist

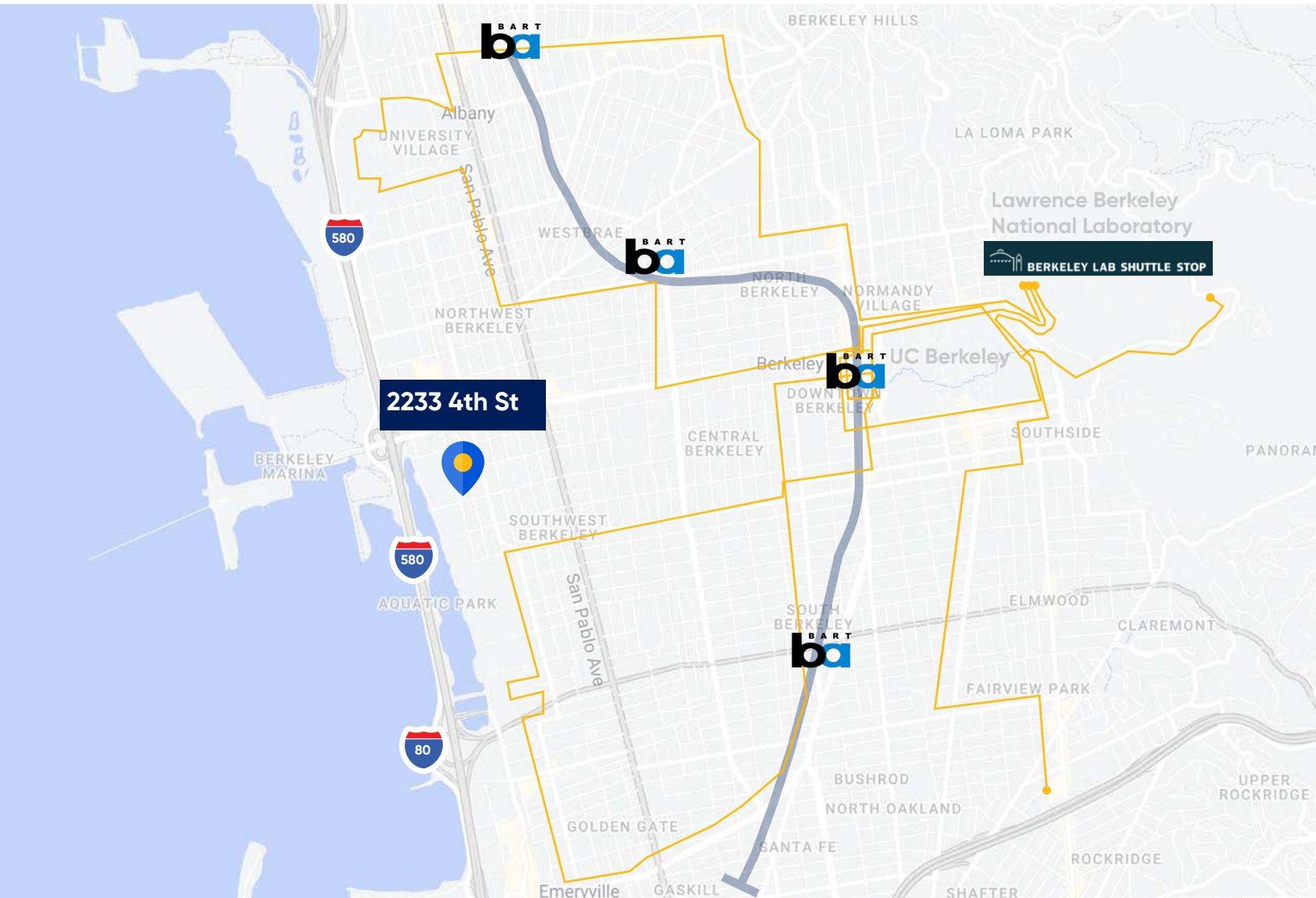
510.851.2004
melmquist@cresa.com
BRE #01230052

Deke Douty

714.345.7058
ddouty@cresa.com
BRE #0212059

2233 4TH ST BERKELEY, CA

TRANSIT MAP



Contact for more information or tour

Matt Elmquist

510.851.2004
melmquist@cresa.com
BRE #01230052

Deke Douty

714.345.7058
ddouty@cresa.com
BRE #0212059

2233 4TH ST BERKELEY, CA

AERIAL MAP



Contact for more information or tour

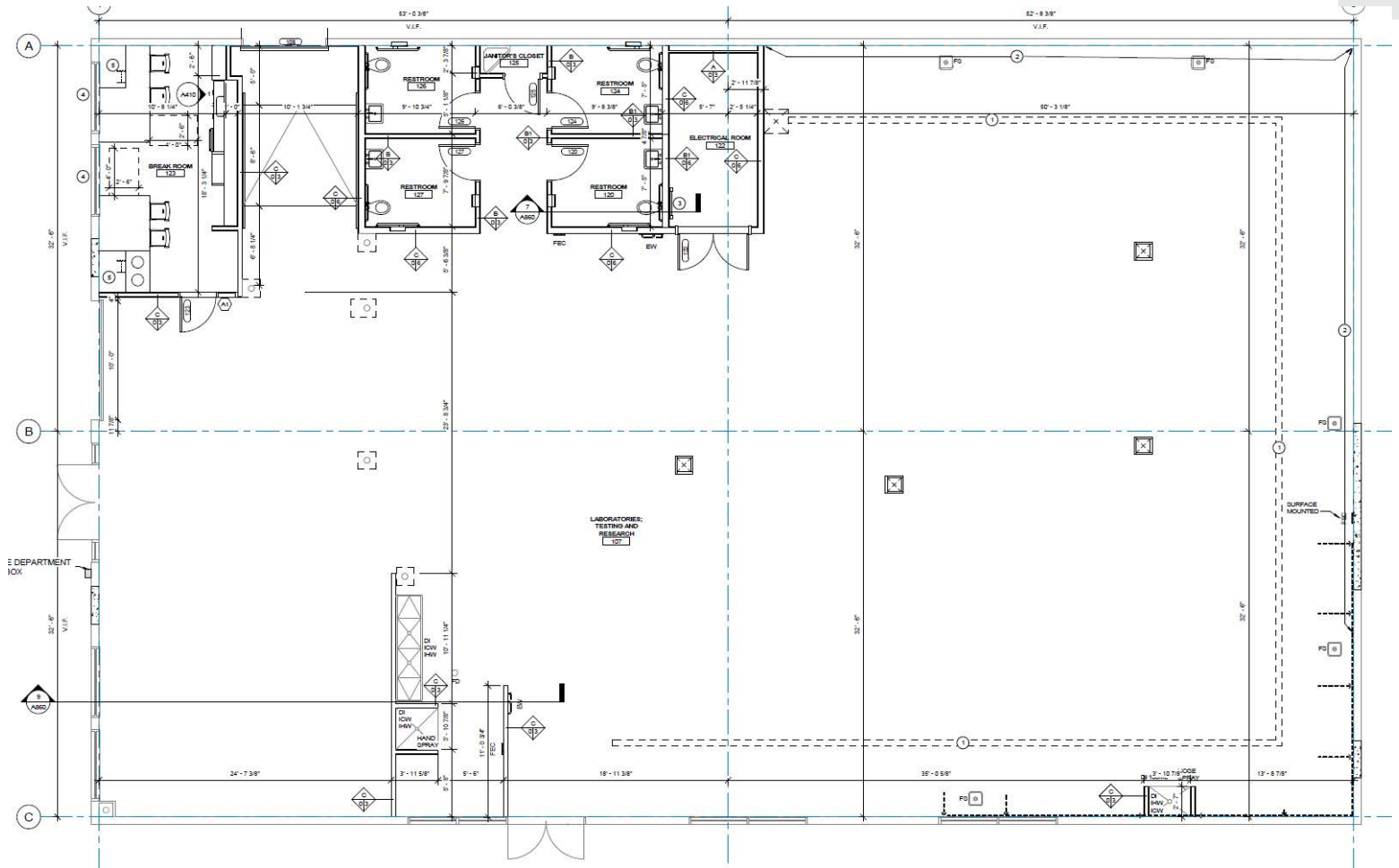
Matt Elmquist

510.851.2004
melmquist@cresa.com
BRE #01230052

Deke Douty

714.345.7058
ddouty@cresa.com
BRE #0212059

2233 4TH ST BERKELEY, CA



UTILITY	DESIGN SET POINT(S)		CAPACITY
DOMESTIC Hot Water - NATURAL GAS FIRED	120°F	1-1/2" Main	119 GALLON TANK
INDUSTRIAL Hot Water - NATURAL GAS FIRED	120°F	1-1/2" Main	119 GALLON TANK
SCH.40 PVC WASTE LINE ALL FIXTURES B-1	4" Waste Line	51 FU	216 FU
DOMESTIC COLD WATER	2" Main		
Natural Gas	2 PSI (Incoming Pressure)	AHU-1,020,000 btu / 1020cfh	4,360 CFH/MBH

HVAC - INSTALLED

- (1) Rooftop MAU unit – 3,000 CFM capable unit.
- (3) Packaged rooftop RTU – (1) 2 Ton and (2) 6 Ton units
- (1) LEF Fan – 3,500 CFM capable

POWER

1200 amps @ 480 VAC

Contact for more information or tour

Matt Elmquist

510.851.2004
 melmquist@cresa.com
 BRE #01230052

Deke Douty

714.345.7058
 ddouty@cresa.com
 BRE #0212059