

# 225 - 130 Avenue NW for Sale

## 71.52 Acres of Industrial Development Land



**Nicholas Farnden**  
780.938.7343  
nfarnden@cresa.com

**Damon Harmon**  
403.875.3133  
dharmon@cresa.com

**cresa**

# 225 - 130 Avenue NW for Sale



## Space Profile

Site Size:	71.52 Acres
Net Buildable Area:	57.18 Acres
Availability:	Immediately
Asking Sale Price:	Market
Zoning:	Industrial Reserve Zone (AGI)
Legal Description:	Plan 9122760 Lot 1
Services:	Full Municipal Standard

## Features & Amenities

High exposure industrial development land  
Superior access to Anthony Henday, Aurum Road & Yellowhead  
12.50 Acres & 44.68 Acres of net building area  
Potential rail spur access and development to site  
AGI Zoning with future industrial zoning with Yellowhead ASP







# SKETCH PLAN

LEGAL DESCRIPTION:

LOT 1, DESCRIPTIVE PLAN 912 2760

MUNICIPAL ADDRESS:

225 130th Avenue N.W.  
EDMONTON, ALBERTA

CLIENT: CCS EDMONTON

SCALE = 1: 5000 metric

NOTES:

1. DISTANCES ARE IN METRES.

2. PROPERTY LINE IS SHOWN THUS: \_\_\_\_\_

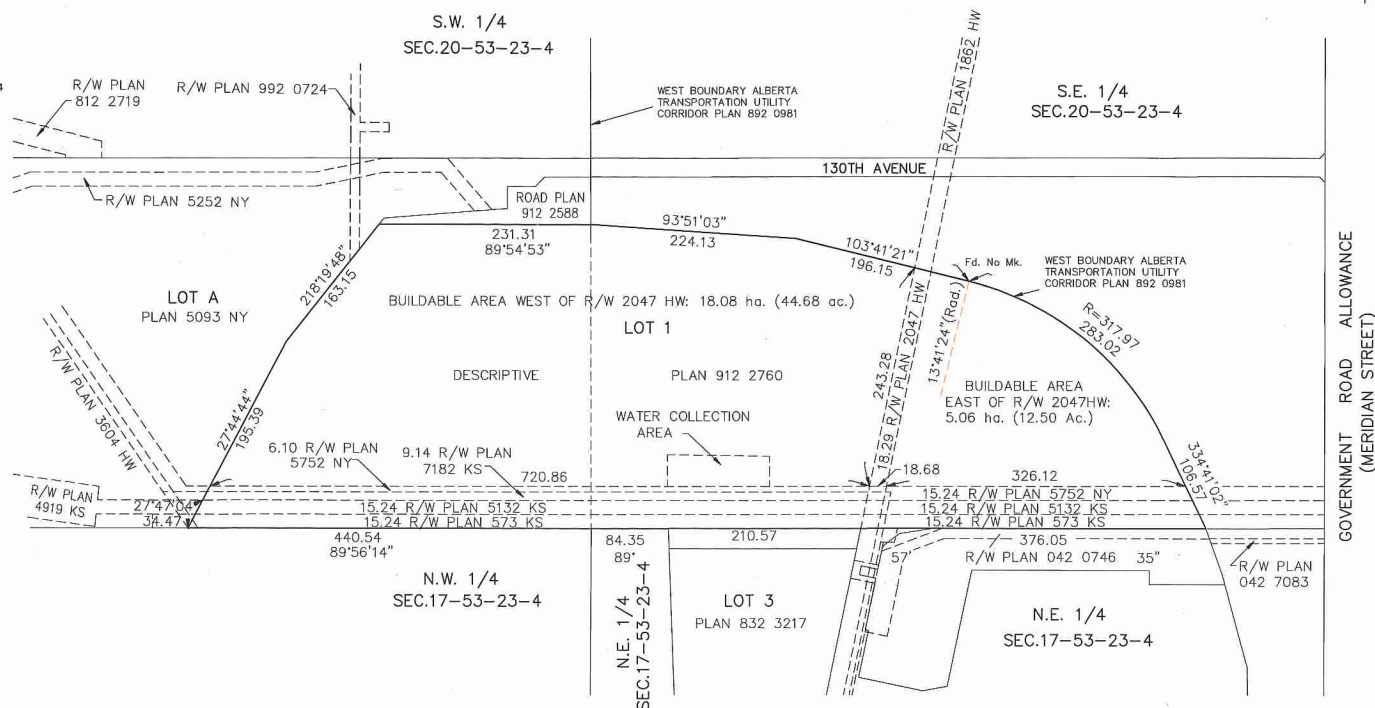
TITLE INFORMATION IS BASED ON CERTIFICATE OF TITLE No. 082 014 749+14

TITLE SEARCH DATED 10 05 08

PROPERTY IS SUBJECT TO THE FOLLOWING INSTRUMENTS:

- UTILITY R/W INST. No. 1846HQ (PLAN 2047 HW)
- UTILITY R/W INST. No. 1270JK (PLAN 4218 HW)
- UTILITY R/W INST. No. 1008LK (PLAN 5132 KS)
- UTILITY R/W INST. No. 2863LO
- UTILITY R/W INST. No. 6099LM (PLAN 573 KS)
- UTILITY R/W INST. No. 7459RM (PLAN 5752 NY)
- ZONING REG. INST. No. 052 107 016
- CAVEAT INST. No. 062 567 270 (EASEMENT)
- RESTRICTIVE COVENANT INST. No. 082 124 683
- EASEMENT INST. No. 082 124 689

TOTAL AREA OF LOT 1	=	28.94ha (71.52Ac.)
TOTAL AREA OF R/W PLANS	=	5.43ha (13.41Ac.)
AREA OF WATER COLLECTION SYSTEM	=	0.375ha (0.93Ac.)
REMAINDER OF BUILDABLE AREA	=	23.14ha (57.18Ac.)



DATED THIS DAY OF AUGUST, 2008

CHARLES L. CHAISSON, ALBERTA LAND SURVEYOR  
© COPYRIGHT CABOT SURVEYS LTD., 2008

**CABOT SURVEYS LTD.**  
Professional Land Surveyors

#403,1313 Cameron Ave., Calgary, Alberta T2T 0L2  
Ph. (403) 276-9216 Fax (403) 276-9219  
E-mail: cabotsurveys@shaw.ca Job No. 08-0006

rp/cc

## 225 - 130 Avenue NW for Sale



### Agent Information

**Nicholas Farnden**  
780.938.7343  
nfarnden@cresa.com

**Damon Harmon**  
403.875.3133  
dharmon@cresa.com

### Cresa

10020 - 101A Avenue, Suite 1980 | Edmonton, AB T5J 3G2 | 780.900.8781 cresa.com

Even though obtained from sources deemed reliable, no warranty or representation, express or implied, is made as to the accuracy of the information herein, and it is subject to errors, omissions, change of price, rental or other conditions, withdrawal without notice, and to any special listing conditions imposed by our principals.

