

Reduced Rate! Now \$2.92 SF

Sublease Available

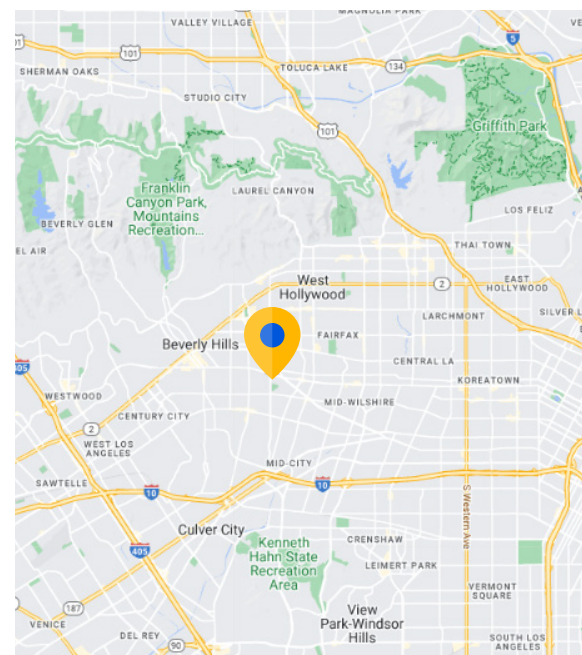
8484 Wilshire Blvd Beverly Hills, CA 90211

Overview

Building:	8484 Wilshire Blvd, Beverly Hills, CA	
Available:	10,355 SF	
Term:	Through December 31, 2028	
Availability:	Immediate	
Asking Rental Rate:	\$3.33 SF	Reduced Rate: \$2.92 SF
Parking:	0.03/1,000 SF	
Building Class:	Class A	
Built:	1972	

Space Highlights

- Ideal Furniture Showroom with prominent building signage and access
-Potential for additional Retail or Office Use
- One office, one conference room, one break room, interior restroom, small interior office area, balance showroom
- 15' High Ceilings
- Great Natural Light
- Prominent Signage
- Good corner in Beverly Hills
- Double Door Entry with Street Level Access



For more information:



Chris Downs
310.415.2939 mobile
cdowns@cresa.com
BRE#: 01352626

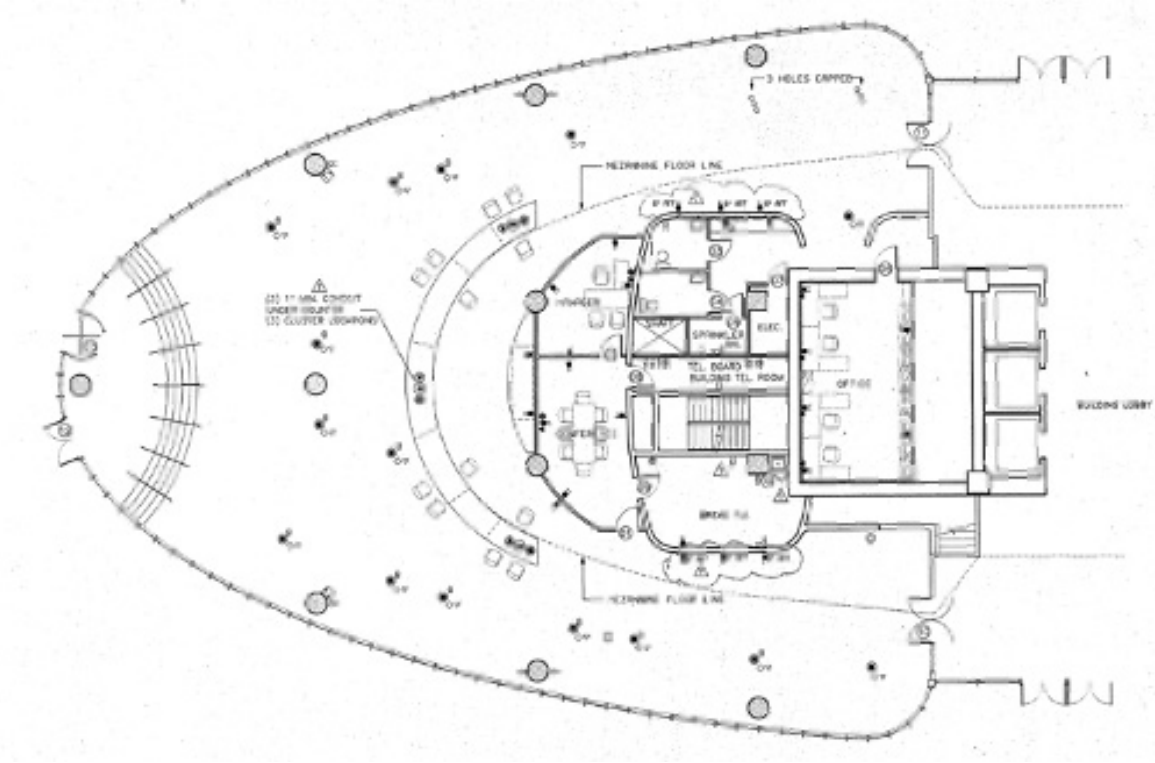


Shawn Sala
310.279.2546 mobile
ssala@cresa.com
BRE#: 01438990

Cresa Los Angeles

555 South Flower Street | Suite 4650
Los Angeles, CA 90071

8484 Wilshire Blvd | 10,355 SF



Sublease Available

cresa

8484 Wilshire Blvd | 10,355 SF



For more information:



Chris Downs
310.415.2939 mobile
cdowns@cresa.com
BRE#: 01352626



Shawn Sala
310.279.2546 mobile
ssala@cresa.com
BRE#: 01438990

Cresa Los Angeles

555 South Flower Street | Suite 4650
Los Angeles, CA 90071