

Industrial Warehouse Crossdock Facility

cresa



Sublease Available

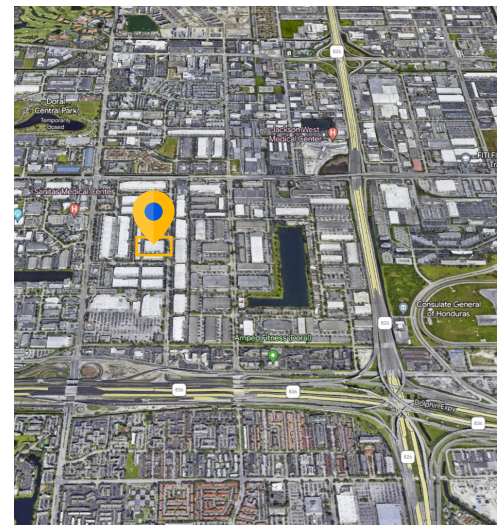
1850 NW 84th Ave Doral, FL

Overview

Building:	1850 NW 84th Ave Doral, FL
Premises:	+/- 23,104 SF Total +/- 1,320 SF Office on 2nd Floor (Included)
Available:	Immediate
Rate:	\$19.00 Industrial Gross
Sublease Term:	02/28/2026
Ceiling Height:	22'
Crossdock Loading:	4 Doublewide Dock Doors (7 Loading Positions) 1 Vehicle Ramp (Included)
Parking:	1.00/1,000 SF
Fire Sprinklers:	Wet
Column Spacing:	40'-0" x 38'-9"
Fully Racked:	Premises is already racked
Term:	Flexible, Short Term or Through Feb 28, 2026

Highlights

- Easy access to MIA Cargo
- Direct access to 836 (Dolphin Expressway), with easy access to 826 (Palmetto Expressway), and Florida's Turnpike
- End Cap unit facing 84th Ave
- Located in heart of Doral at Beacon Centre master planned business park



For more information



Jeff Hartsook
305.321.9665 mobile
jhartsook@cresa.com



Adam Talbot
954.376.0236 mobile
atalbot@cresa.com



Alberto Martinez
954.401.4829 mobile
amartinez@cresa.com

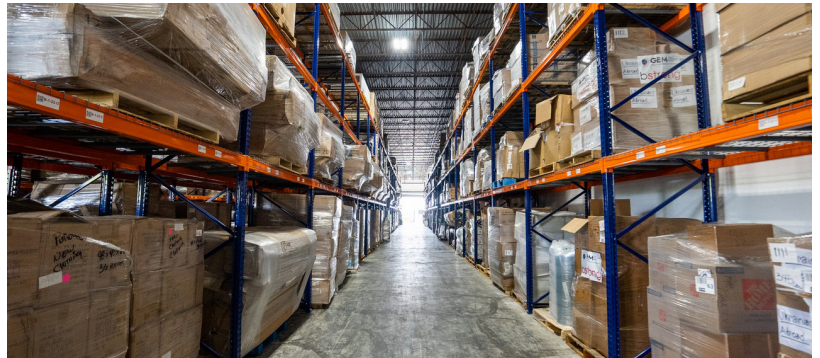
Cresa

1 SE 3rd Avenue, Suite 1980
Miami, FL 33131

Sublease Available



1850 NW 84th St Doral, FL



Contact: 305.702.8252

1850 NW 84th St

Doral, FL

Leasable Space
Shared Passageway

