

For Sale

cresa

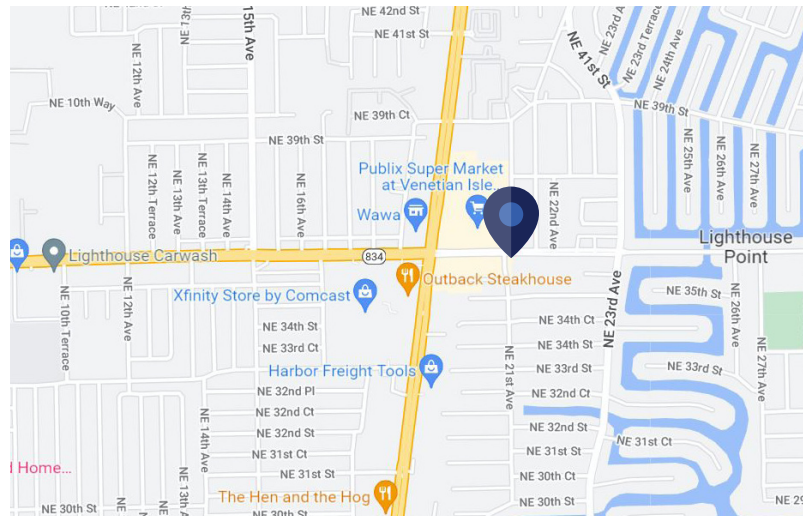


ARC Professional Building

2100 E Sample Road, Unit 101
Lighthouse Point, FL 33064

Space Profile:

Premises	Suite 101
RSF	3,028 SF
Use	Medical Office Condo Unit
Listing Price	\$1,300,000.00
Availability	Negotiable
Building Class	B
Submarket	Pompano Beach
Built	1998
Parking	5.50/1,000 SF



Contact:



Zachary Talbot
305.712.6990
ztalbot@cresa.com

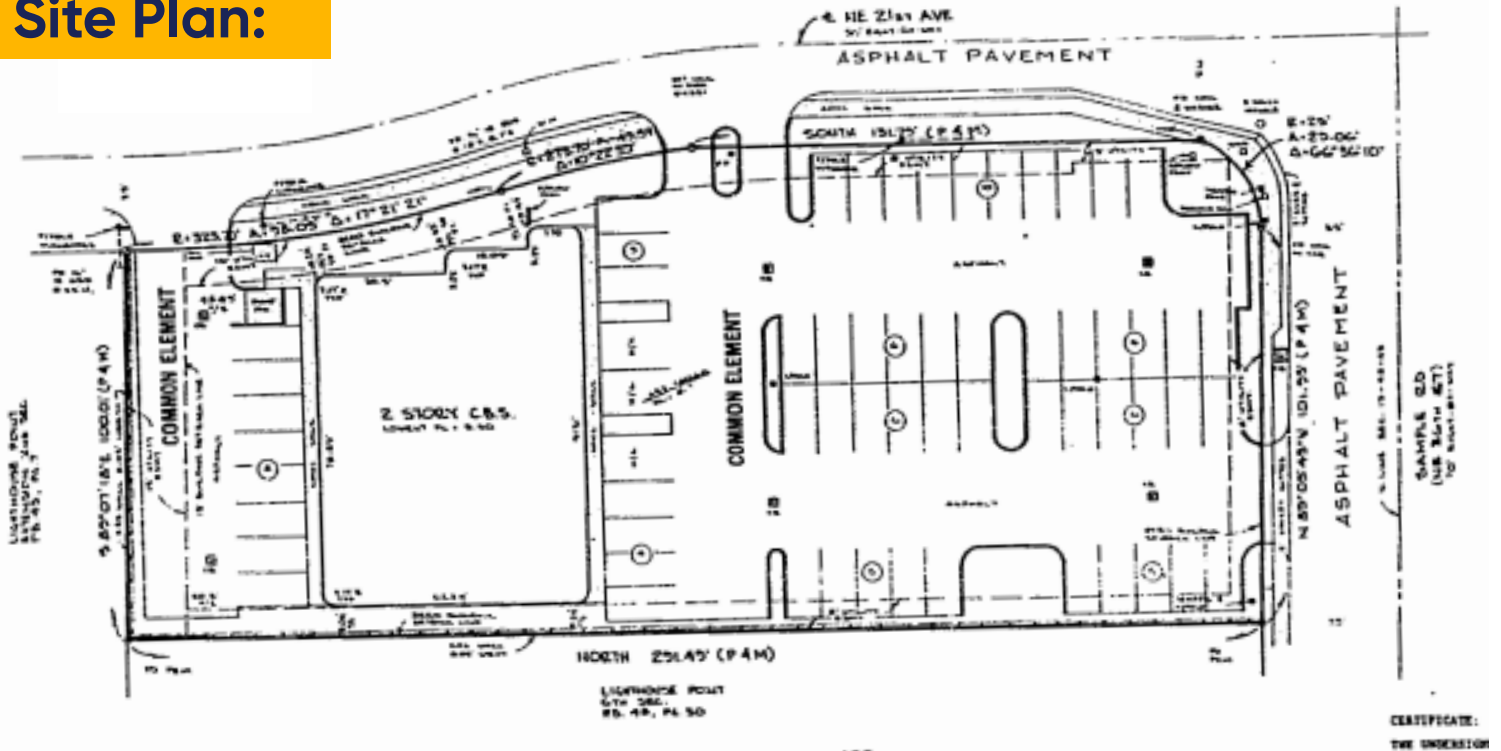


Trent Simpson
305.363.4389
tsimpson@cresa.com

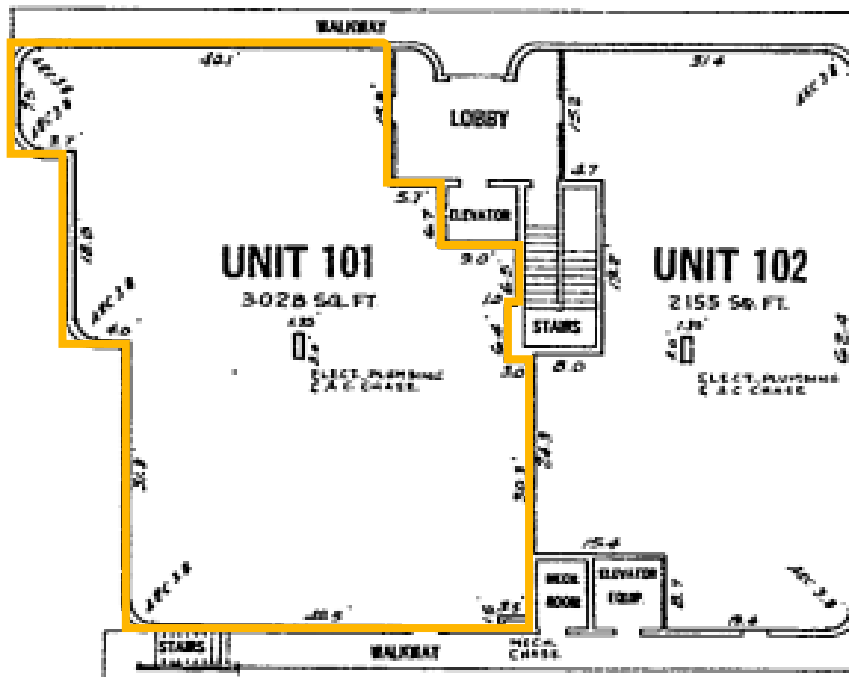
Features:

- Prime Lighthouse Point Location
- Updated Building
- Built out Medical Space
- Equipment and Furniture availability are negotiable
- Excellent surface parking availability

Site Plan:



Floor Plan:





ARC Professional Building

2100 E Sample Road



cresa . . .

Cresa © 2022. All rights reserved. The information contained in this document has been obtained from sources believed reliable. While Cresa does not doubt its accuracy, Cresa has not verified it and makes no guarantee, warranty, or representation about it. It is your responsibility to independently confirm its accuracy and completeness. Any projections, opinions, assumptions or estimates used are for example only and do not represent the current or future performance of the property. The value of this transaction to you depends on tax and other factors which should be evaluated by your tax, financial and legal advisors. You and your advisors should conduct a careful, independent investigation of the property to determine to your satisfaction the suitability of the property for your needs.