

# 655 THIRD AVENUE

## Sublease Available



### Space Profile

<b>Premises</b>	Partial 14th Floor
<b>Size</b>	4,767 RSF
<b>Rental Rate</b>	Upon Request
<b>Availability</b>	Immediate
<b>Term</b>	Through February 28, 2025

### Features

- Nine Offices, Conference Room, Seven Workstations, IT Room, Kitchen, & Reception Area
- Furniture Available, Move-In Condition, Plug & Play

VIEW THE VIRTUAL TOUR **360°**



### For More Information, Please Contact

**Richard Selig**  
212.687.4159 - Direct  
917.575.7350 - Mobile  
RSelig@cresa.com

Even though obtained from sources deemed reliable, no warranty or representation, express or implied, is made as to the accuracy of the information herein, and it is subject to errors, omissions, change of price, rental or other conditions, withdrawal without notice, and to any special listing conditions imposed by our principals.



1633 Broadway, 22nd Floor, New York, NY 10019





# 655 THIRD AVENUE

Partial 14th Floor | 4,767 RSF



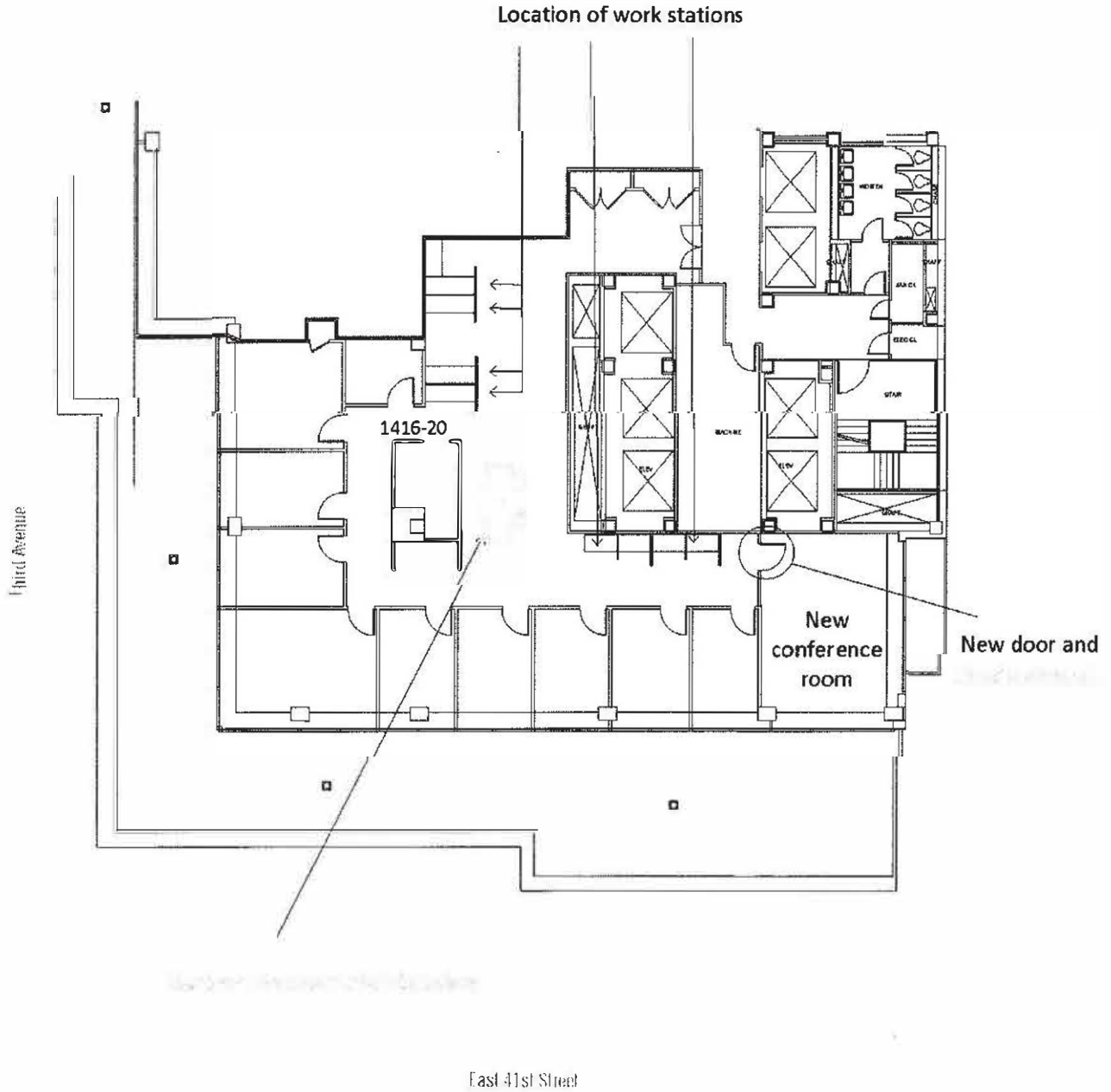
**For More Information, Please Contact**

**Richard Selig**  
212.687.4159 - Direct  
917.575.7350 - Mobile  
RSelig@cresa.com

**Cresa**  
1633 Broadway  
22nd Floor  
New York, NY 10019

# 655 THIRD AVENUE

Partial 14th Floor | 4,767 RSF



**For More Information, Please Contact**

**Richard Selig**  
 212.687.4159 - Direct  
 917.575.7350 - Mobile  
 RSelig@cresa.com

**Cresa**  
 1633 Broadway  
 22nd Floor  
 New York, NY 10019