

# 5 HANOVER SQUARE

BETWEEN BEAVER STREET & PEARL STREET

## Sublease Available



### Space Profile

<b>Premises</b>	Partial 15th Floor
<b>Area</b>	6,260 rentable SF
<b>Term</b>	Through October 30, 2027
<b>Rent</b>	Upon Request
<b>Electricity</b>	Rent Inclusion
<b>Escalations</b>	Fixed percentage and RE Tax Increases

### Space Features

- Entrance directly off elevator lobby
- 8 windowed offices including a large corner
- 1 large windowed conference room
- 3 interior offices
- 7 large cubicles
- 14 bench style seats
- Wet pantry
- Furniture can be included
- Good light and views
- Financially strong sublandlord
- Nightly cleaning included

### Building Features

- Steps from Hanover Square Park
- Modern construction
- Built in 1961 and extensively renovated in 2012
- Large sleek marble lobby attended 24/7/365
- New elevator cabs
- Tenant only conference center and lounge on the 2nd floor
- Steps from the PATH, Ferry, 1,2,3,4,5,J & Z trains
- Less than 30 minute drive to LaGuardia, Kennedy and Newark airports
- Messenger center

For More Information,  
Please Contact

**Marcus Craddock**  
240.372.7079 - Cell  
mcraddock@cresa.com



**cresa**

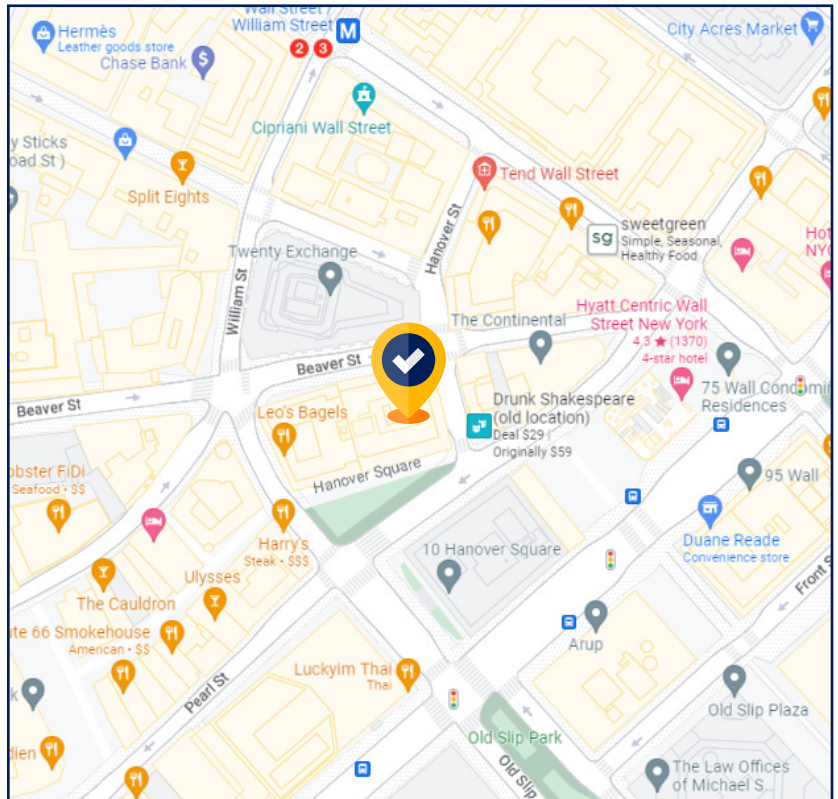
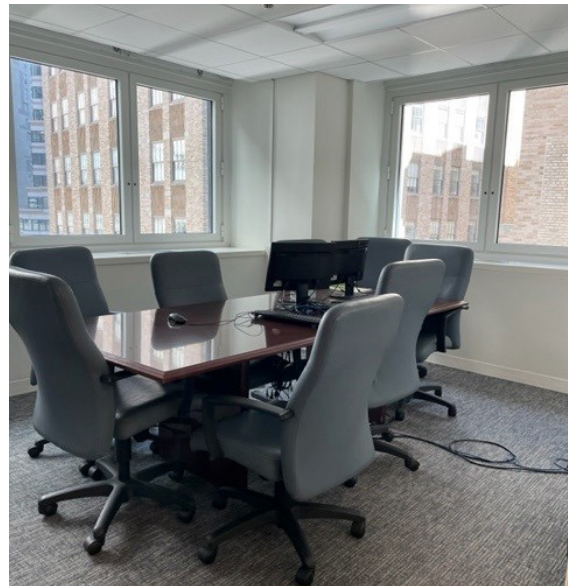
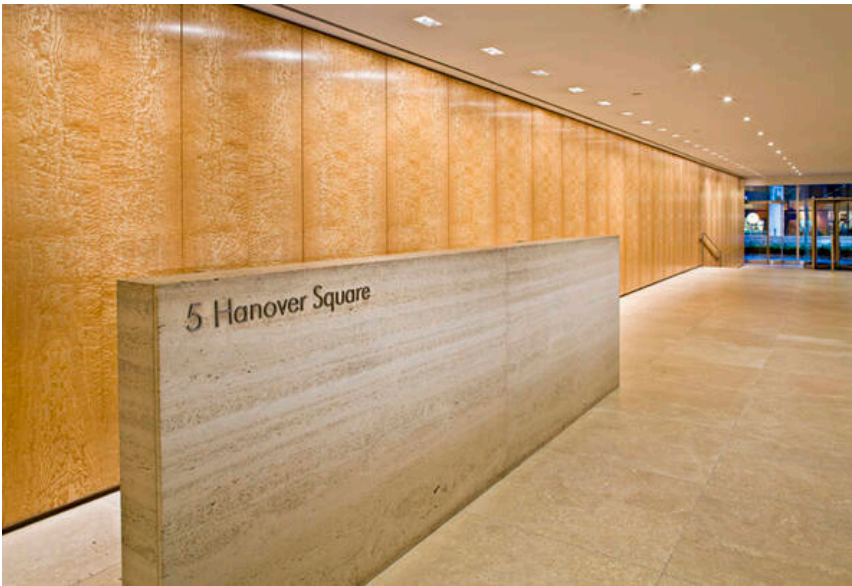
Even though obtained from sources deemed reliable, no warranty or representation, express or implied, is made as to the accuracy of the information herein, and it is subject to errors, omissions, change of price, rental or other conditions, withdrawal without notice, and to any special listing conditions imposed by our principals.

1133 Avenue of the Americas, 29th Fl, New York, NY 10036

# 5 HANOVER SQUARE

BETWEEN BEAVER STREET & PEARL STREET

## Sublease Available



For More Information,  
Please Contact

**Marcus Craddock**  
240.372.7079 - Cell  
mcraddock@cresa.com



Even though obtained from sources deemed reliable, no warranty or representation, express or implied, is made as to the accuracy of the information herein, and it is subject to errors, omissions, change of price, rental or other conditions, withdrawal without notice, and to any special listing conditions imposed by our principals.

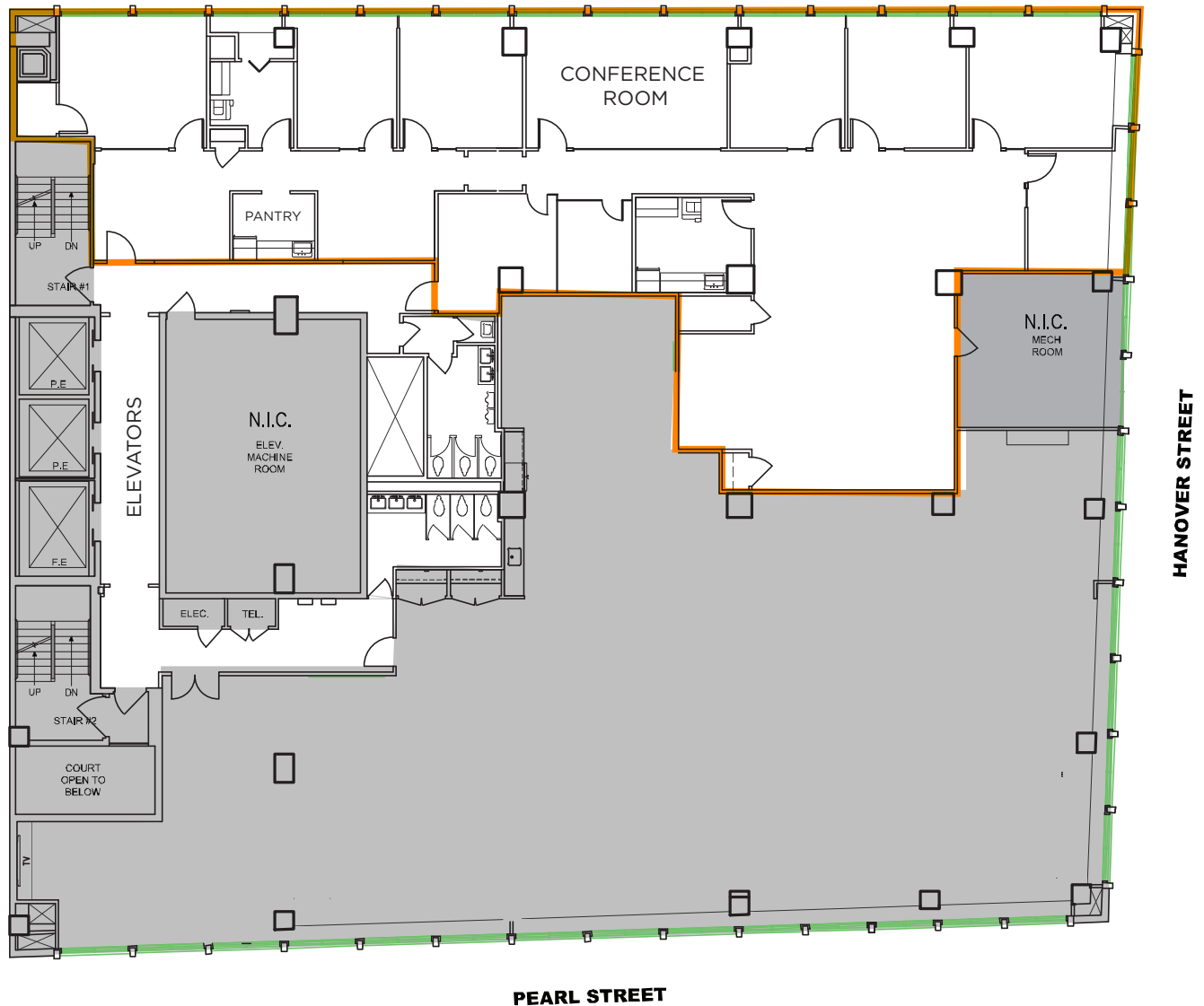
1133 Avenue of the Americas, 29th Fl, New York, NY 10036

# 5 HANOVER SQUARE

BETWEEN BEAVER STREET & PEARL STREET

Sublease  
Available

15th Floor - 6,260 RSF



 Available Space

For More Information,  
Please Contact

**Marcus Craddock**  
240.372.7079 - Cell  
mcraddock@cresa.com



**cresa** 

Even though obtained from sources deemed reliable, no warranty or representation, express or implied, is made as to the accuracy of the information herein, and it is subject to errors, omissions, change of price, rental or other conditions, withdrawal without notice, and to any special listing conditions imposed by our principals.

1133 Avenue of the Americas, 29th Fl, New York, NY 10036