

PENN 1

Sublease Available

Space Profile

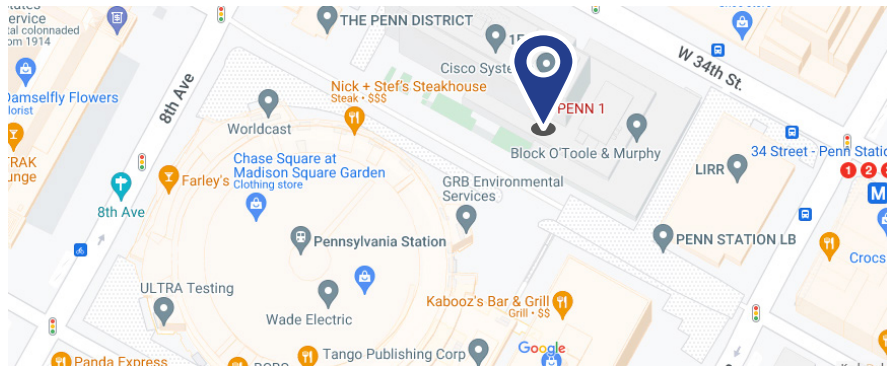
Premises	Partial 18th Floor
Size	10,994 SF
Availability	Immediate
Term	Through November 2028

Features

- Direct presence off of the elevator
- Above standard installation
- FF&E included
- Strong sublandlord

Building Features

- Food service
- 24/7 access
- Communal outdoor space



Virtual Tour

For More Information, Please Contact

Nick Markel **Matthew Feigen**
914.980.3634 - Mobile 917.882.5358 - Mobile
NMarkel@cresa.com MFeigen@cresa.com

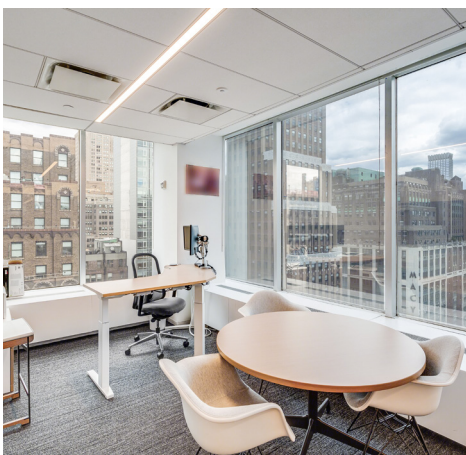


Even though obtained from sources deemed reliable, no warranty or representation, express or implied, is made as to the accuracy of the information herein, and it is subject to errors, omissions, change of price, rental or other conditions, withdrawal without notice, and to any special listing conditions imposed by our principals.

1633 Broadway, 22nd Floor, New York, NY 10019

PENN 1

Sublease
Available



For More Information, Please Contact

Nick Markel
914.980.3634 - Mobile
NMarkel@cresa.com

Matthew Feigen
917.882.5358 - Mobile
MFeigen@cresa.com



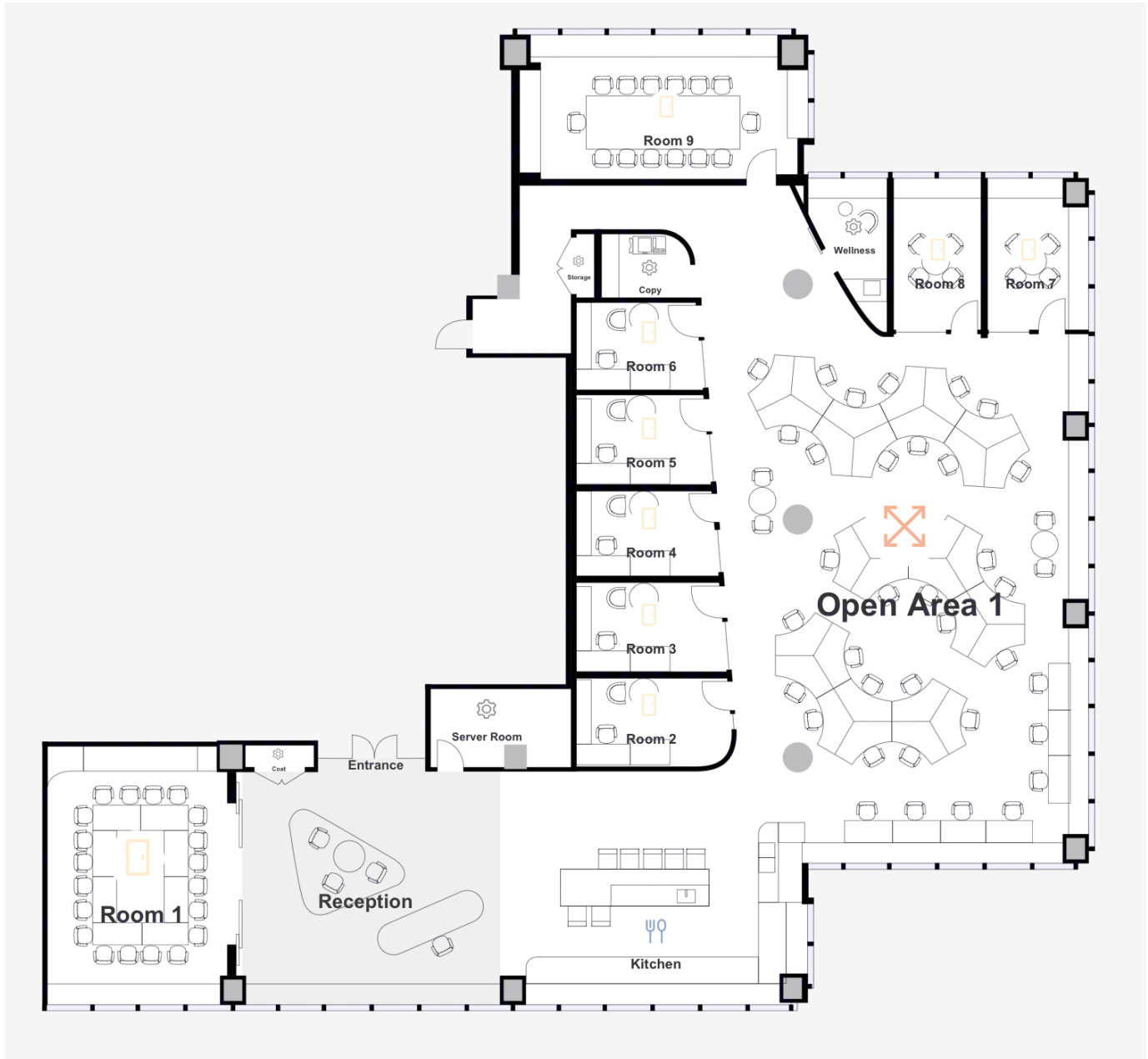
Even though obtained from sources deemed reliable, no warranty or representation, express or implied, is made as to the accuracy of the information herein, and it is subject to errors, omissions, change of price, rental or other conditions, withdrawal without notice, and to any special listing conditions imposed by our principals.

1633 Broadway, 22nd Floor, New York, NY 10019

PENN 1

Sublease Available

Partial 18th Floor - 10,994 SF



For More Information, Please Contact

Nick Markel
914.980.3634 - Mobile
NMarkel@cresa.com

Matthew Feigen
917.882.5358 - Mobile
MFeigen@cresa.com



Even though obtained from sources deemed reliable, no warranty or representation, express or implied, is made as to the accuracy of the information herein, and it is subject to errors, omissions, change of price, rental or other conditions, withdrawal without notice, and to any special listing conditions imposed by our principals.

1633 Broadway, 22nd Floor, New York, NY 10019