

65 Fairchild Street

**Blackbaud HQ Campus
Charleston, SC 29492**

**Up to 90,000 SF
Available**

**CLICK BELOW FOR
OUR PROPERTY TOUR!**



A newly built, 12-acre LEED Gold campus

CHARLESTON INDUSTRIAL

**For additional
information,
please contact:**

Michael G. White, SIOR, CCIM
Managing Principal
mike.white@charlestonindustrial.com
843.819.1234

Matthew Feeney
Managing Principal
mfeeney@cresa.com
610.825.2159

65 Fairchild Street
Charleston, SC 29492

Table of Contents



	Page
Location	3
Property Highlights	4
The Campus	5
Employee Experience	6
Modern Office Workplace	7-8
Floor Plans	9-11

Location

Exceptional Accessibility

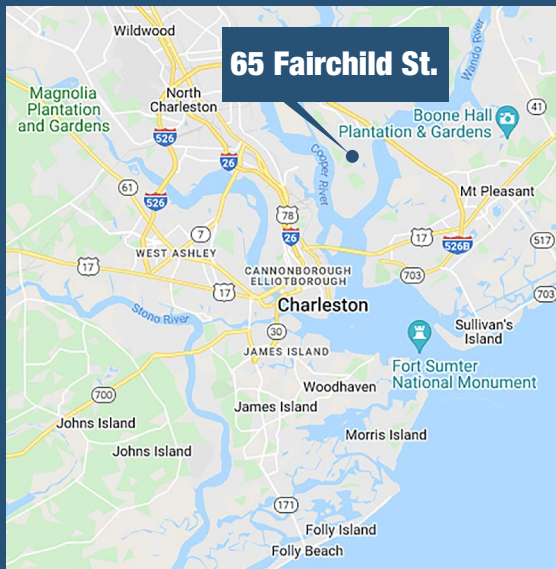
Located on Daniel Island just 15 minutes from historic Charleston and 15 minutes from the Airport.

65 Fairchild Street | Charleston, SC 29492



Great Amenities:

- ▶ Vibrant Daniel Island Community
- ▶ Local schools and daycare
- ▶ Extensive trail network + green space
- ▶ High-end restaurants + breweries
- ▶ Credit One stadium + tennis club
- ▶ (3) hotels within walking distance
- ▶ Daniel Island Golf Club
- ▶ Ferry to Historic Charleston
- ▶ Minutes from local beaches
- ▶ Fishing, boating, and community pools
- ▶ The Citadel + College of Charleston



Miles of bike and walking trails along the Wando River

Blackbaud (NASDAQ: BLKB), the world's leading cloud software company powering social good is offering sublease space within its newly built Daniel Island four-story headquarters. Blackbaud will retain the fourth floor while offering fully furnished sublease space on the 1st, 2nd, and 3rd floor.

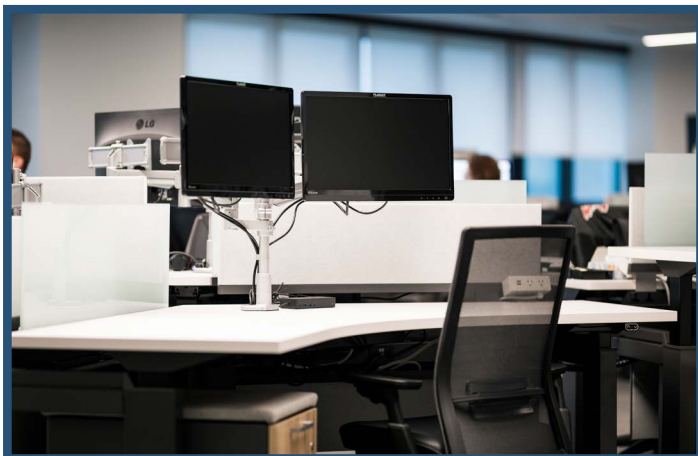
12-Acre LEED Gold Campus
with ample parking and room to grow



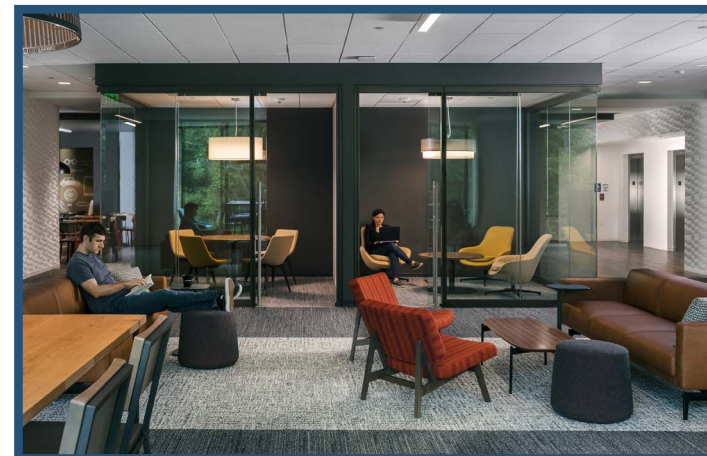
First-Class Employee Experience
with full-service amenities and offerings



Newly Furnished, Ready to Move-In
offering a true plug-and-play opportunity



Highly Functional, Modern Office Space
with leading-edge technology and agile workspaces



12-Acre LEED Gold Campus

- ▶ Ample parking and room to grow
- ▶ EV Charging Stations
- ▶ Outdoor pavilion and event space
- ▶ Disc golf
- ▶ Basketball
- ▶ Employee garden
- ▶ Putting green
- ▶ Access to miles of trails
- ▶ Hotels + restaurants within walking distance



Full-Service Experience

- ▶ 24X7 security and visitor management
- ▶ Starbucks coffee shop
- ▶ On-site café offering breakfast and lunch
- ▶ Wellness Rooms
- ▶ Gym and lockers/showers
- ▶ Mail/print services
- ▶ Gaming area
- ▶ Multiple large conference rooms
- ▶ Event space capable of holding 350



Fitness Center with Full Locker Rooms



Large, Configurable Conference Rooms



Starbucks Coffee Shop



Gaming Area



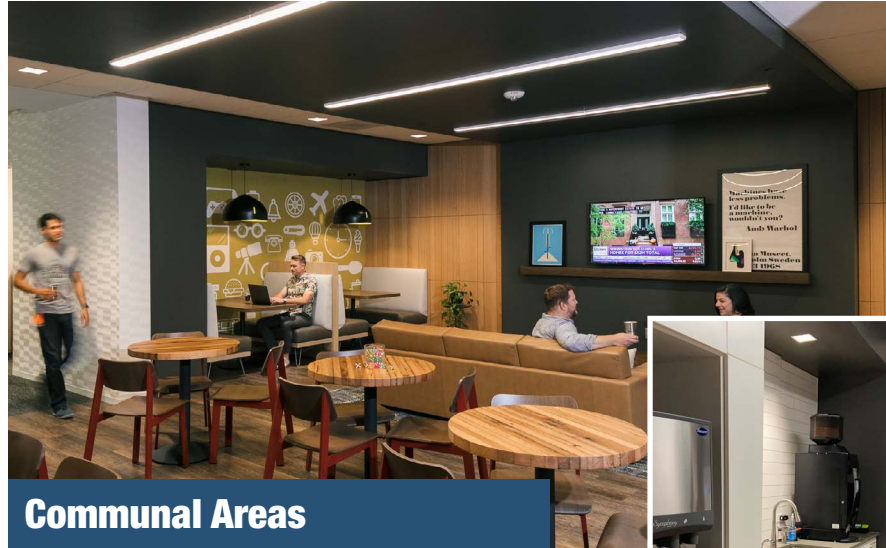
Staffed Reception Area



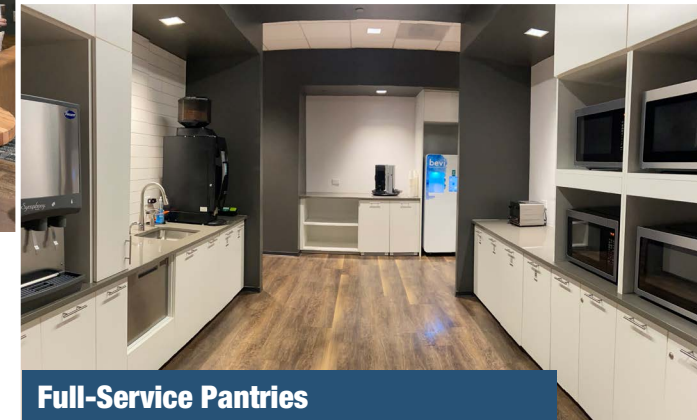
Cafeteria Seating: Ability to Sit 350

High-Tech + Collaborative:

- ▶ Fully outfitted suites
- ▶ Ready for move-in
- ▶ Open, collaborative design
- ▶ Mix of large/small conference and collaboration space
- ▶ Fully integrated audio visual and video
- ▶ Multiple full-service break rooms:
 - Coffee
 - Filtered water and ice
 - Microwaves/fridges/freezer
 - Recycling and composting services



Communal Areas



Full-Service Pantries



Collaboration Spaces



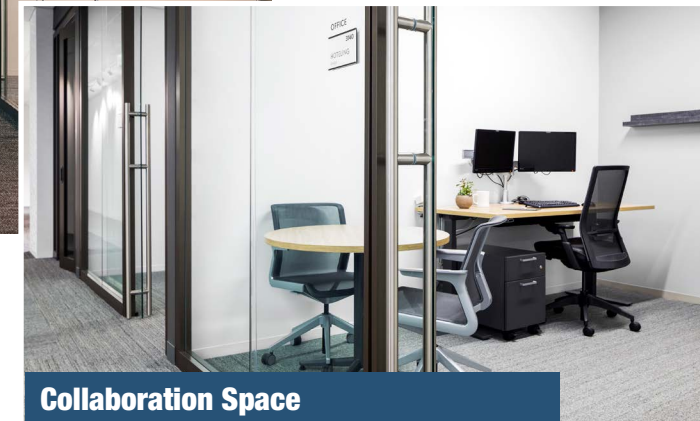
Video Conferencing



Multiple Meeting Rooms

Plug-and-Play:

- ▶ Fully outfitted suites, ready for move-in
- ▶ Ergonomic sit-stand workstations
- ▶ Full desktop offering – just plug in
 - Double monitors
 - Ergonomic monitor arms
 - Universal docking stations
 - Keyboards/mice
 - Individual desk storage
- ▶ Network ready with:
 - Access flooring
 - 6-e structured cabling
 - Pre-installed wireless access points
 - Customizable network racks + switches



Availability: Floor 1

Suite 100: 6,948 SF

(42) Workstations

(2) Offices + (5) Team Rooms (could be setup as offices)

(3) Conference Rooms

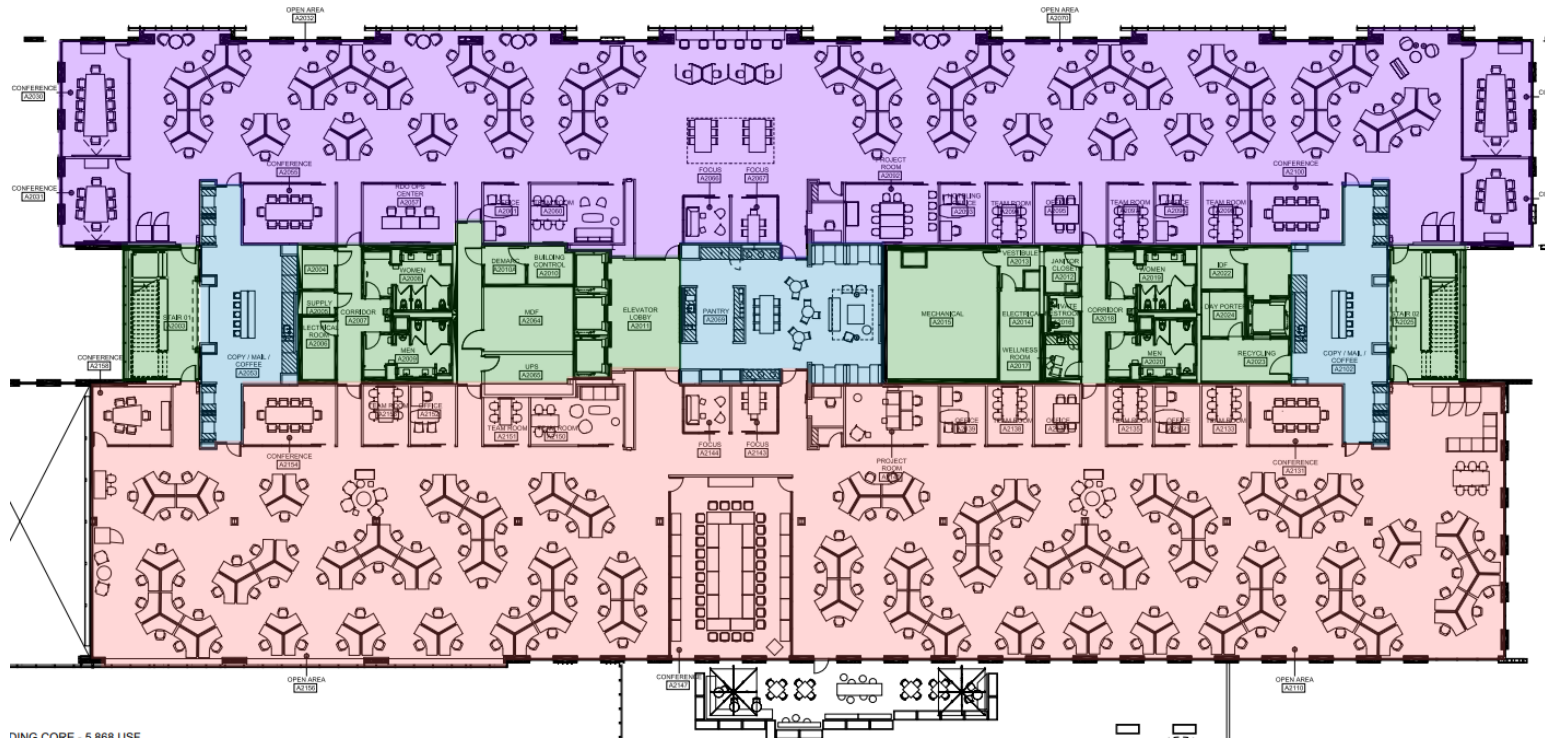
49 Person Capacity



Floor 2

Suite 201: 18,020 SF

(105) Workstations + (4) enclosed privacy booths + (4) open booths
(3) Offices + (6) Team Rooms (could be setup as offices) + (2) phone rooms
(9) Conference Rooms + (2) Open Collaboration Rooms
114 Person Capacity



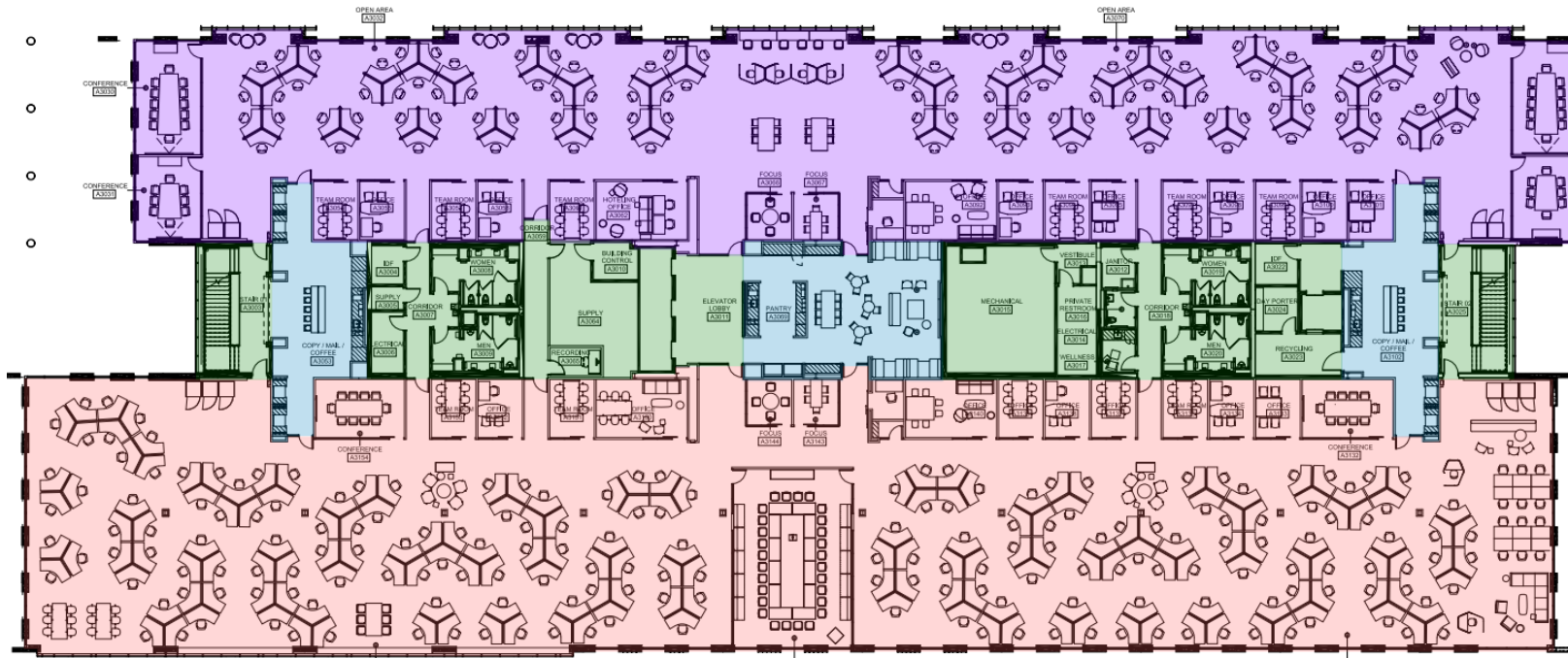
Suite 200: 23,071 SF

(168) Workstations + (4) enclosed phone booths
(3) Offices + (8) Team Rooms (could be setup as offices) + (2) phone rooms
(6) Conference Rooms
179 Person Capacity

Floor 3

Suite 301: 17,371 SF

(105) Workstations + (4) enclosed privacy booths + (4) open booths
(7) Offices + (8) Team Rooms (could be setup as offices) + (2) phone rooms
(6) Conference Rooms
120 Person Capacity



Suite 300: 25,570 SF

(204) Workstations + (6) enclosed privacy booths
(4) Offices + (7) Team Rooms (could be setup as offices) + (2) phone rooms
(5) Conference Rooms
215 Person Capacity



65 Fairchild Street | Charleston, SC 29492

A newly built, 12-acre LEED Gold campus

CHARLESTON INDUSTRIAL

Michael G. White, SIOR, CCIM
Managing Principal
mike.white@charlestonindustrial.com
843.819.1234

Matthew Feeny
Managing Principal
mfeeny@cresa.com
610.825.2159

Cresa is the world's largest commercial real estate advisory firm that exclusively represents occupiers and specializes in the delivery of fully integrated real estate solutions. Delivered across every industry, its services include Consulting, Facilities Management, Global Portfolio Solutions, Investment Banking, Lease Administration, Location Strategy & Economic Development Incentives, Project Management, Transaction Management and Workplace Intelligence. With over 1000 employees in more than 80 offices globally, Cresa partners with occupiers everywhere. For more information, please visit [cresa.com](https://www.cresa.com)

Cresa © 2022. All rights reserved. The information contained in this document has been obtained from sources believed reliable. While Cresa does not doubt its accuracy, Cresa has not verified it and makes no guarantee, warranty, or representation about it. It is your responsibility to independently confirm its accuracy and completeness. Any projections, opinions, assumptions or estimates used are for example only and do not represent the current or future performance of the property. The value of this transaction to you depends on tax and other factors which should be evaluated by your tax, financial and legal advisors. You and your advisors should conduct a careful, independent investigation of the property to determine to your satisfaction the suitability of the property for your needs.

