



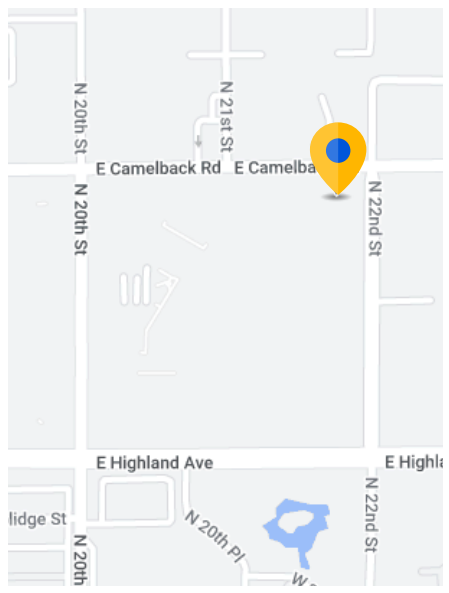
Sublease Available

2141 E Camelback Rd.

Phoenix, AZ 85016

Overview

Building:	2141 E Camelback Rd. Phoenix, AZ 85016
Premises:	36,532 SF
Term:	Through April 30, 2025
Available:	Suite 222 3,368 RSF
Rental Rate:	Withheld
Building Class:	Class B Office/Medical
Parking:	5.00/1,000 SF
Stories:	2
Built/Renovated:	1973 2009



For more information:



Jake Bonnell
602.826.8615 mobile
jbonnell@cresa.com

Cresa
2398 E Camelback Rd., Ste. 222
Phoenix, AZ 85014

Sublease Available

cresa

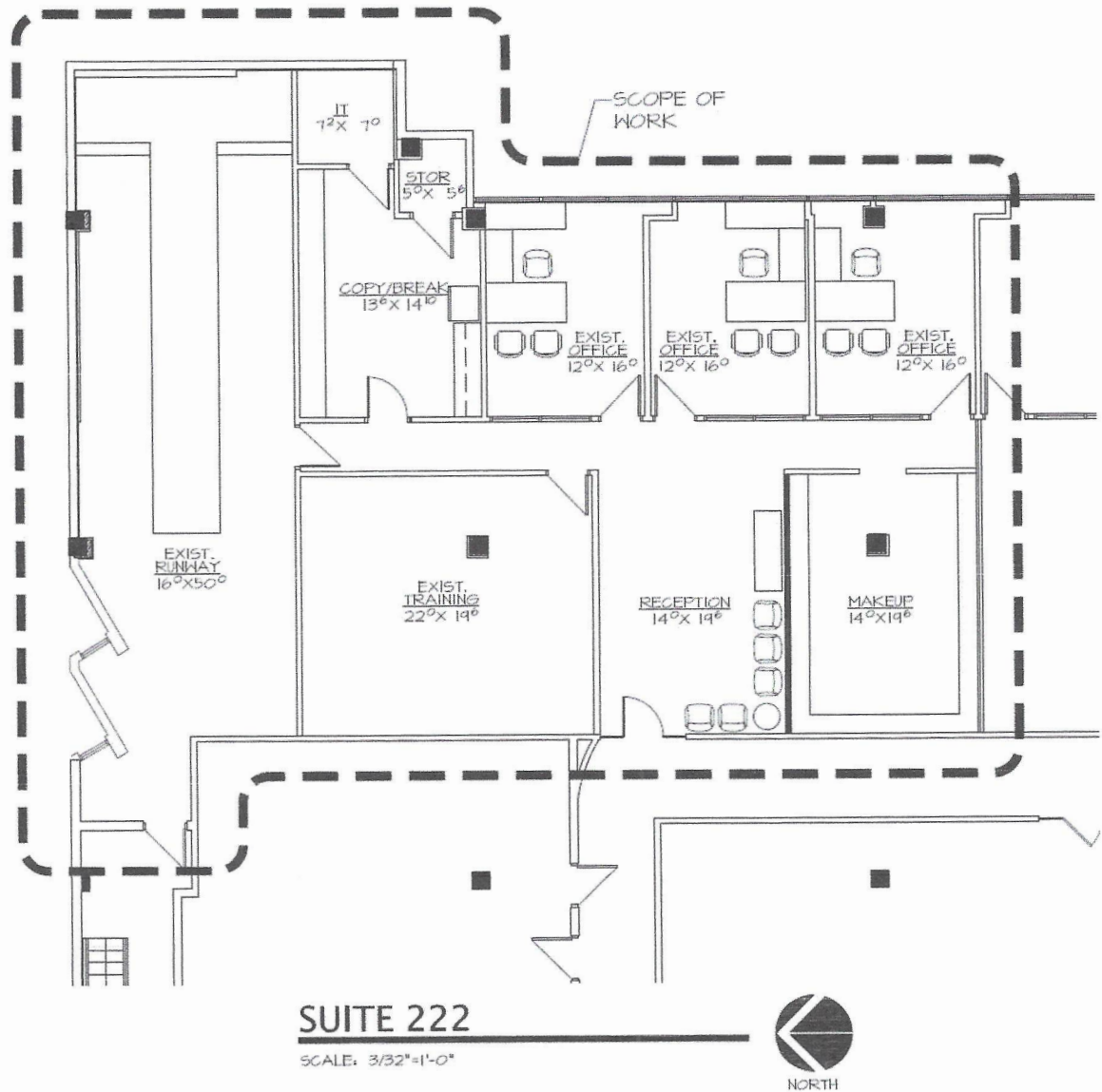
2141 E Camelback Rd.
Phoenix, AZ 85016

Suite 222 | 3,368 RSF



2141 E Camelback Rd. Suite 222 | 3,368 RSF

Phoenix, AZ 85016



Space Specs

- Reception Area
- (3) Private Offices
- (2) Large Open Rooms Previously Used as Posing and Runway Practice Rooms
- (1) Break Room Area
- Storage Room

VIEW THE VIRTUAL TOUR 360

2141 E Camelback Rd.
Phoenix, AZ 85016

Suite 222 | 3,368 RSF



Property Features

- Amenity-rich area offers dining, lodging, retail, and more - all within walking distance
- Easy access to 51 Freeway located less than a mile away
- 2-Story surface garage
- Card key access after hours, evening and weekend patrol
- Adjacent to the Town & Country Shopping Center, just one block from the Biltmore Fashion Park, and The Esplanade