



Sublease Available

Corridors Corporate Center

Phoenix, AZ 85027

Overview

Location:	2155 W Pinnacle Peak Rd., Phoenix, AZ
Term:	Through July 31, 2026
Available Space:	Suite 210 19,208 RSF Suite 212 3,267 RSF
Occupancy:	March 1, 2024
Building Class:	Class A Office
Rental Rate:	Withheld
Parking:	5.00/1,000 SF
Furniture:	Included
Built:	2002



For more information:



Brandon Clarke
602.770.3464 mobile
bclarke@cresa.com



Jake Bonnell
602.826.8615 mobile
jbonnell@cresa.com



Ben Gibbs
325.370.4418 mobile
bgibbs@cresa.com

Cresa
2398 E. Camelback Rd. Suite 900
Phoenix, AZ 85014

Sublease Available

cresa

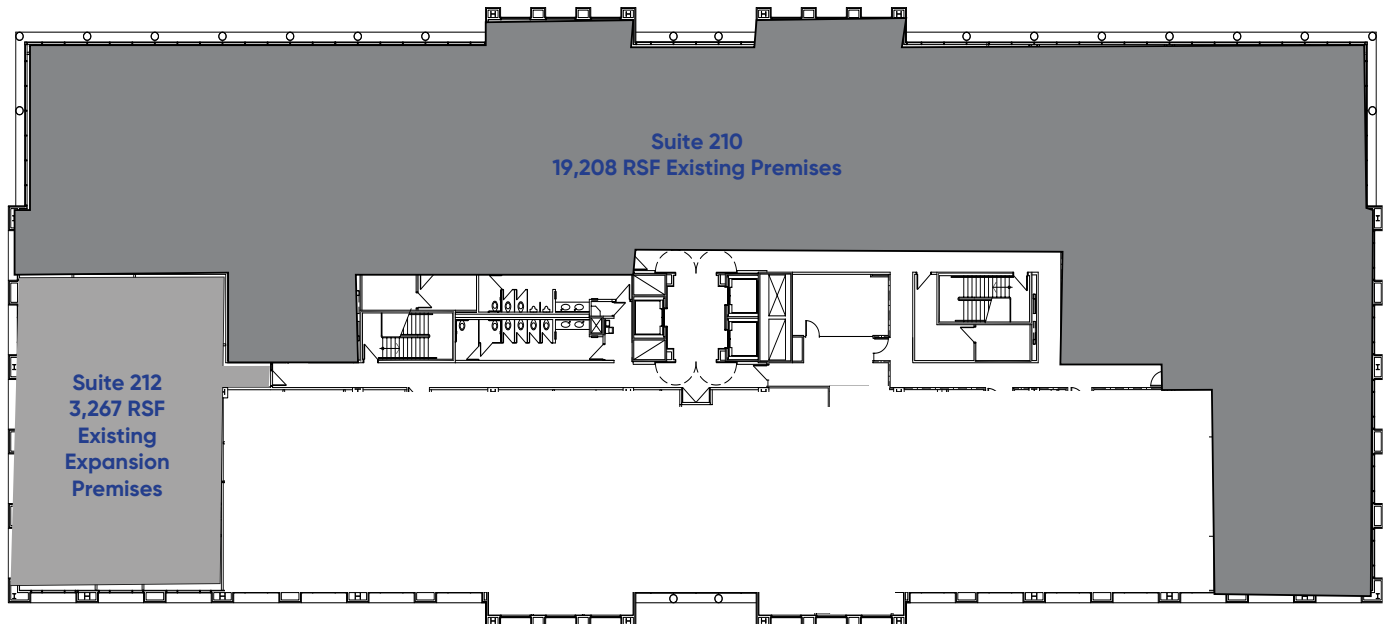
Corridors Corporate Center

2155 W Pinnacle Peak Rd. Phoenix, AZ 85027



Corridors Corporate Center

2155 W Pinnacle Peak Rd. Phoenix, AZ 85027



Suite 210 Space Specs

- (6) Workstations
- (7) Private offices
- (1) Conference room
- (1) Kitchenette/break room
- (1) Storage/IT room



Suite 212 Space Specs

- (112) Workstations
- (13) Private offices
- (2) Small conference room
- (1) Large conference room
- (1) Kitchen/break room
- (1) IT, server & storage room



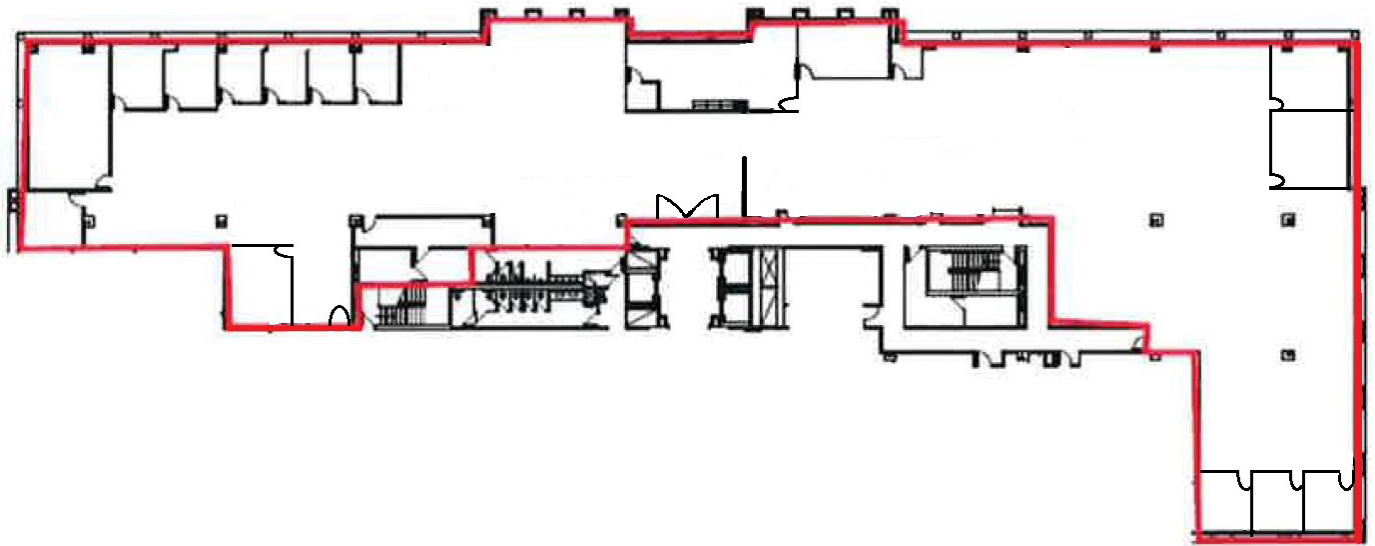
Sublease Available

cresa

Corridors Corporate Center

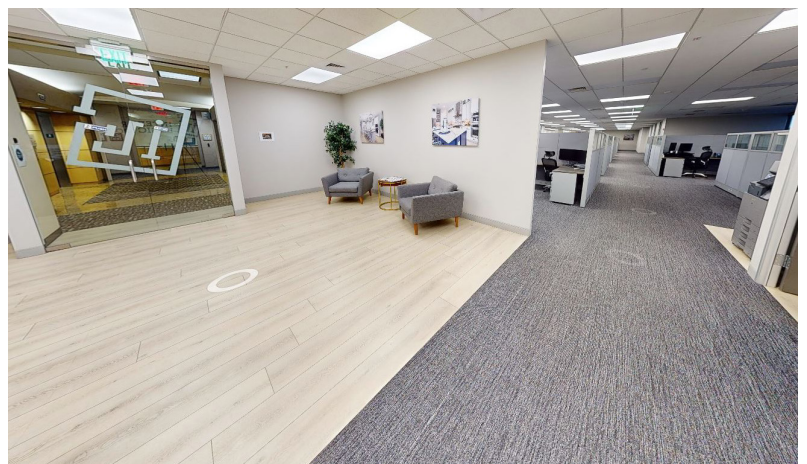
2155 W Pinnacle Peak Rd. Phoenix, AZ 85027

Suite 210 | 19,208 RSF



Space Specs

- (112) Workstations
- (13) Private offices
- (2) Small conference room
- (1) Large conference room
- (1) Kitchen/break room
- (1) IT, server & storage room

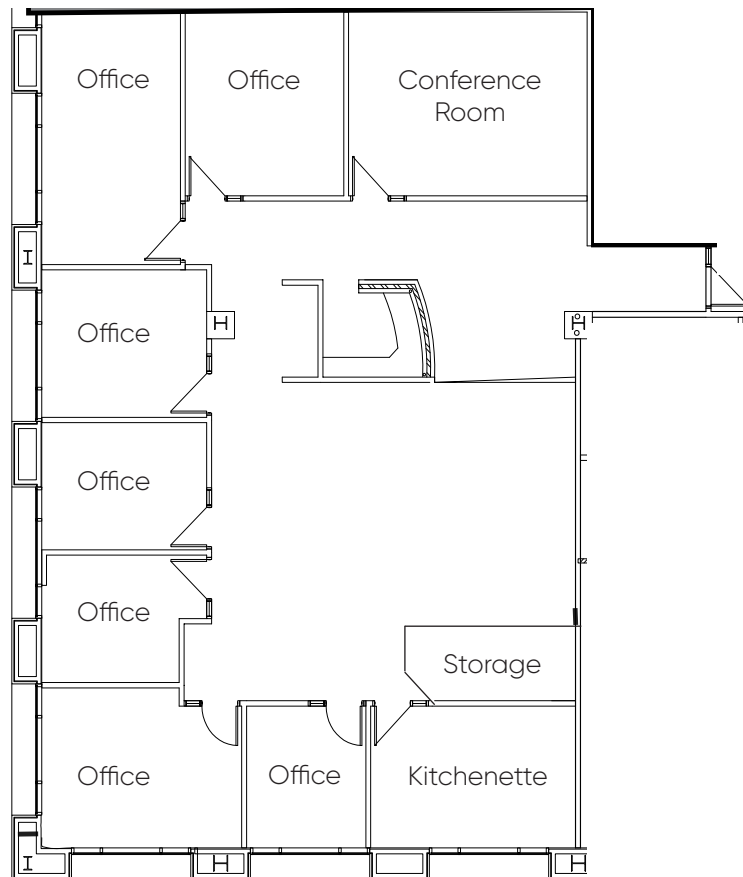


VIEW THE
VIRTUAL TOUR **360°**

Corridors Corporate Center

2155 W Pinnacle Peak Rd. Phoenix, AZ 85027

Suite 212 | 3,267 RSF



Space Specs

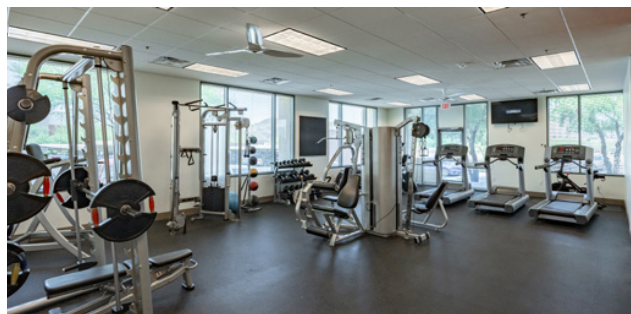
- (6) Workstations
- (7) Private offices
- (1) Conference room
- (1) Kitchenette
- (1) Storage/IT room



VIEW THE VIRTUAL TOUR **360**

Corridors Corporate Center

2155 W Pinnacle Peak Rd. Phoenix, AZ 85027



Building Highlights

- Full diamond interchange at Pinnacle Peak & I-17.
- Over 1.7 million SF of retail within one mile: The Shops at Norterra, Happy Valley Towne Center, and Deer Valley Towne Center.
- On-site amenities: Deli, Fitness Center, Conference room, and outdoor seating area.

For more information:



Brandon Clarke
602.770.3464 mobile
bclarke@cresa.com



Jake Bonnell
602.826.8615 mobile
jbonnell@cresa.com



Ben Gibbs
325.370.4418 mobile
bgibbs@cresa.com