



cresa:~

Development Site for Sale

411 E 1st St
Newberg, OR

One-of-a-kind Commercial Lot in Newberg

Gross Site Area 0.24 Acres
(+/- 10,300 SF)

Price \$600,000

Zoning AE

Features

- Vacant, development-ready lot
- Flat lot in prime downtown location
- Desirable downtown synergy and walkability to restaurants, bars, retail shops, banks, and a hotel
- Unique infill site in the Newberg I-5 Commercial Core
- Opportunity for multi-story/mixed use project

Contact:



Sean Heaton
503.320.1961
sheaton@cresa.com

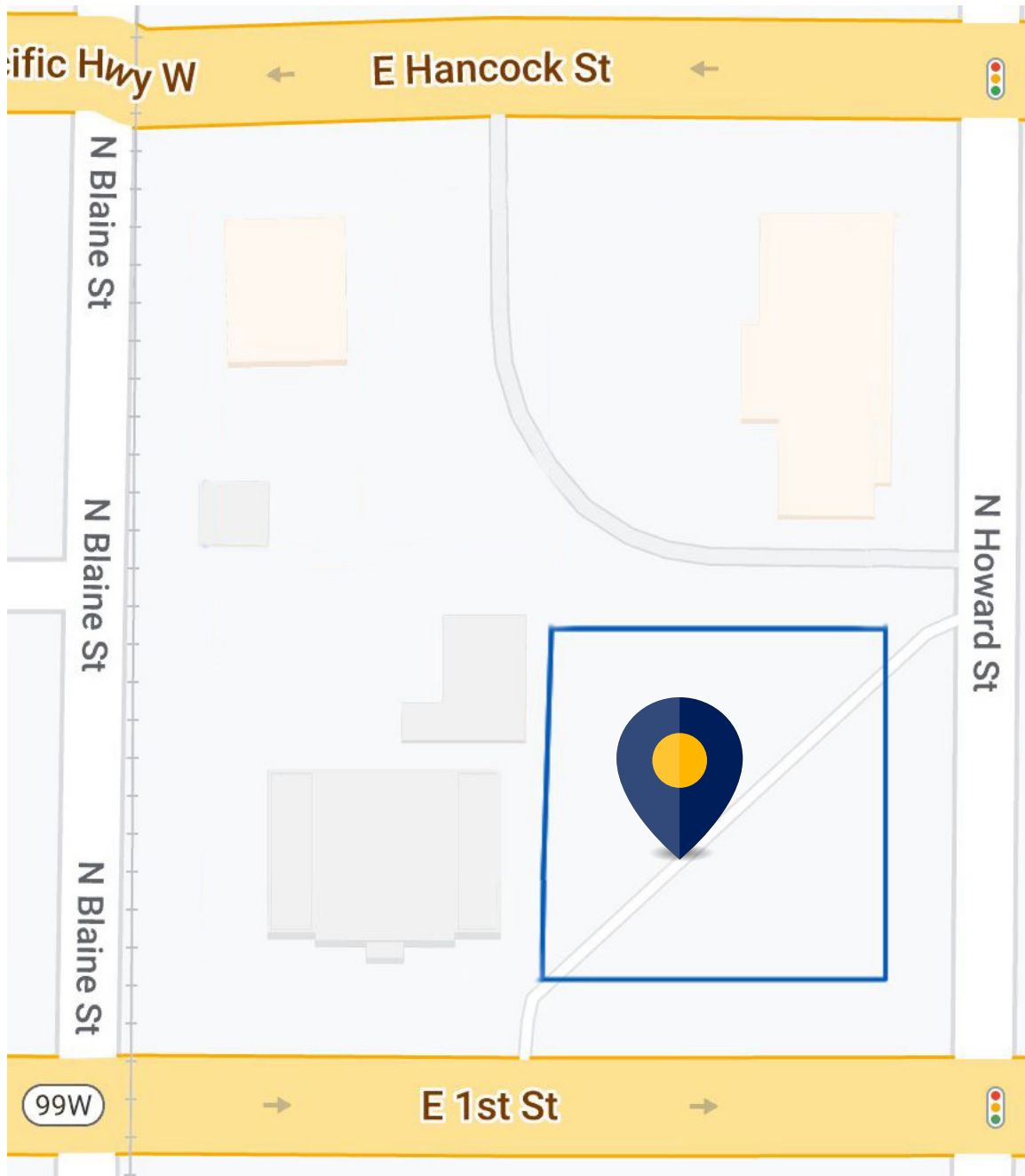


Sean Connors
503.886.8689
sconnors@cresa.com



Hayley Mueller
503.341.9034
hmueller@cresa.com

Parcel Map

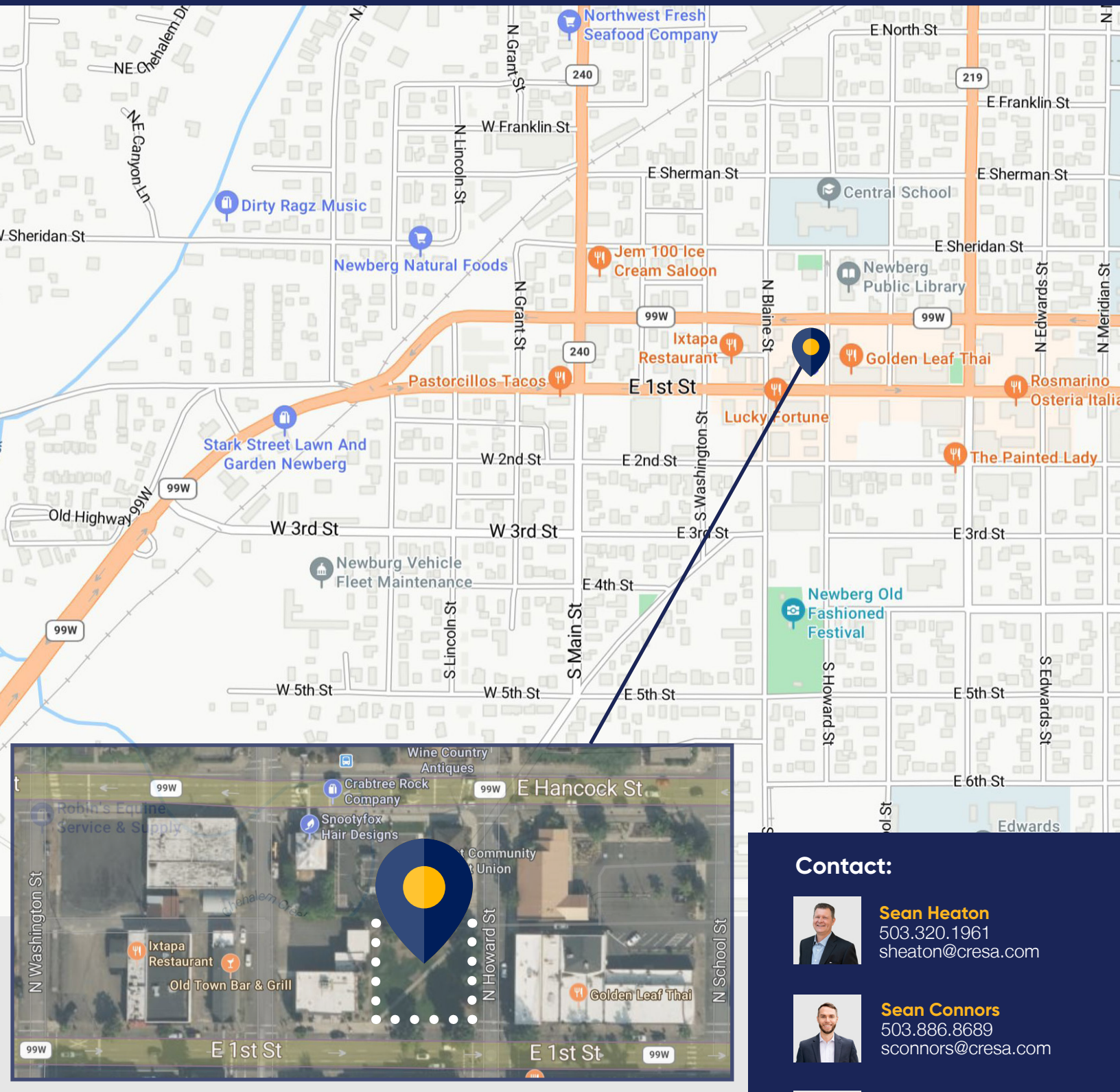


Site Photos



Land for Sale

411 E 1st St
Newberg, OR



Contact:



Sean Heaton

503.320.1961
sheaton@cresa.com



Sean Connors

503.886.8689
sconnors@cresa.com



Hayley Mueller

503.341.9034
hmueller@cresa.com

cresa

1355 NW Everett St, Suite 100 | Portland, OR 97209

cresa.com/Portland