



# Full Building Sublease

**1510 Technology Center**  
**1510 SE Water Ave.**  
**Portland, OR 97214**

## Features:

- 4 private single user shower & changing room facilities
- LEED Platinum Certified
- Secured parking garage
- Property management on-site
- Close proximity to the Eastbank Esplanade, Nossa Familia Coffee, OMSI, CLIMB PCC Campus, Max light rail, Portland Streetcar, and many activities off of Water Ave.

## Space Profile:

<b>Premises</b>	Entire Building	<b>Building Class</b>	Class A Office
<b>RSF</b>	39,549 SF	<b>Submarket</b>	Central Portland/SE
<b>Rental Rate</b>	\$23.00/SF FSG	<b>Built</b>	Complete Reno. 2015
<b>Availability</b>	30 Days	<b>Parking</b>	70 Parking Spaces (1.55/1,000 SF)
<b>Term</b>	Thru Aug 2027		

## Contact:

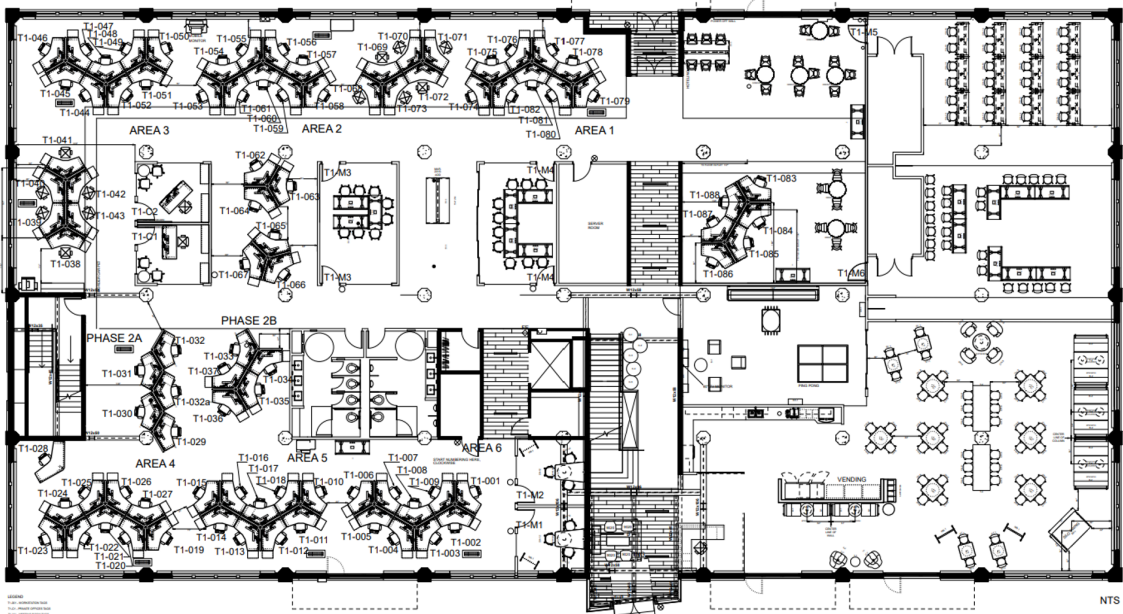


**Kelsey Machuca**  
 503.679.2419  
 kmachuca@cresa.com

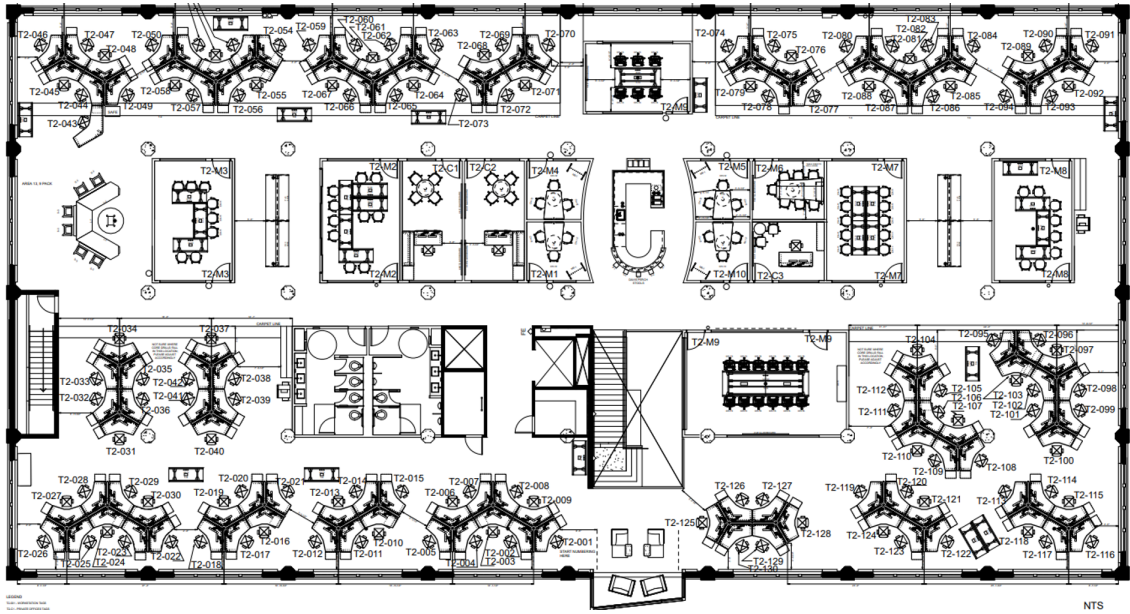


**Sean Connors**  
 917.842.9699  
 sconors@cresa.com

# 1st Floor Plan



# 2nd Floor Plan



## Space Profile:

- Conference Rooms 9
- Huddle Rooms 12

Coffee & Snack Bar



Breakroom Lounge



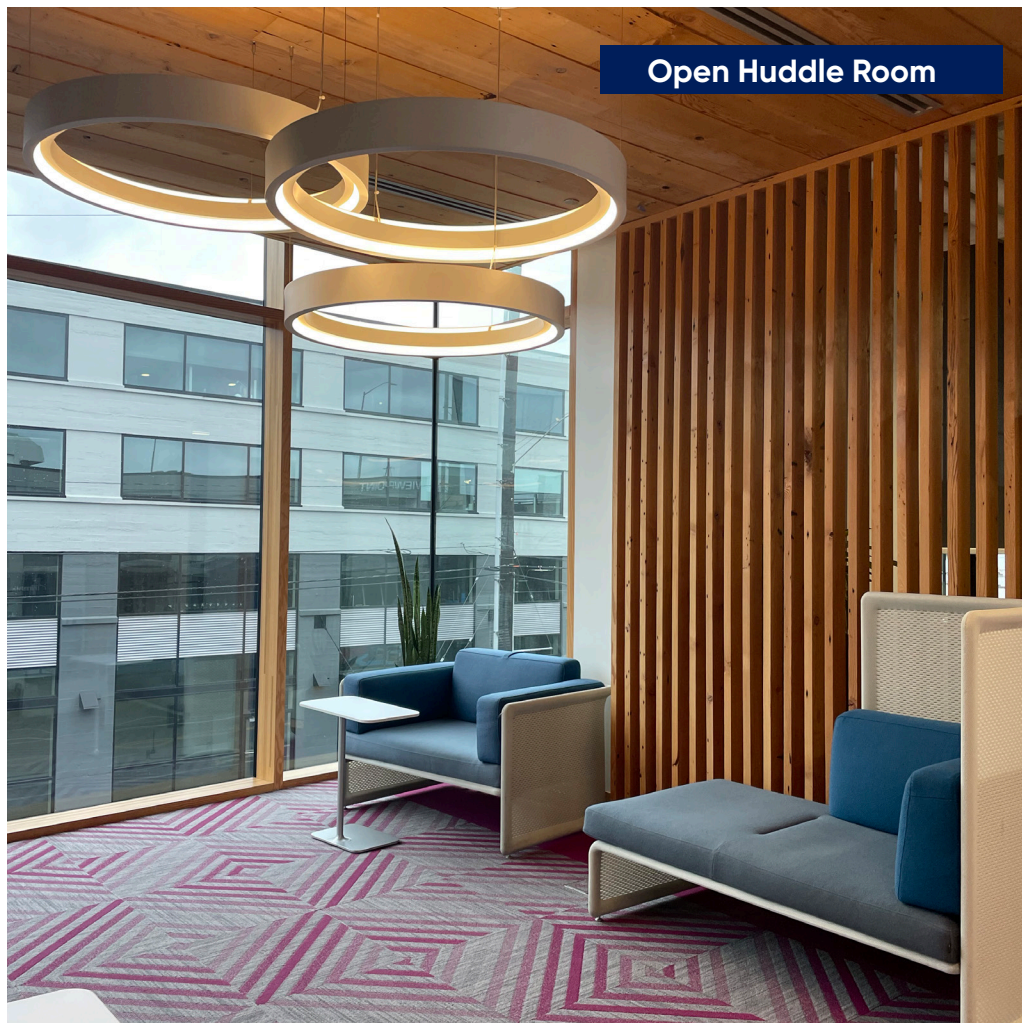
## Full Building Sublease

1510 SE Water Ave  
Portland, OR 97214

Flexible Training Room



Open Huddle Room



Open Huddle & Workspaces



cresa

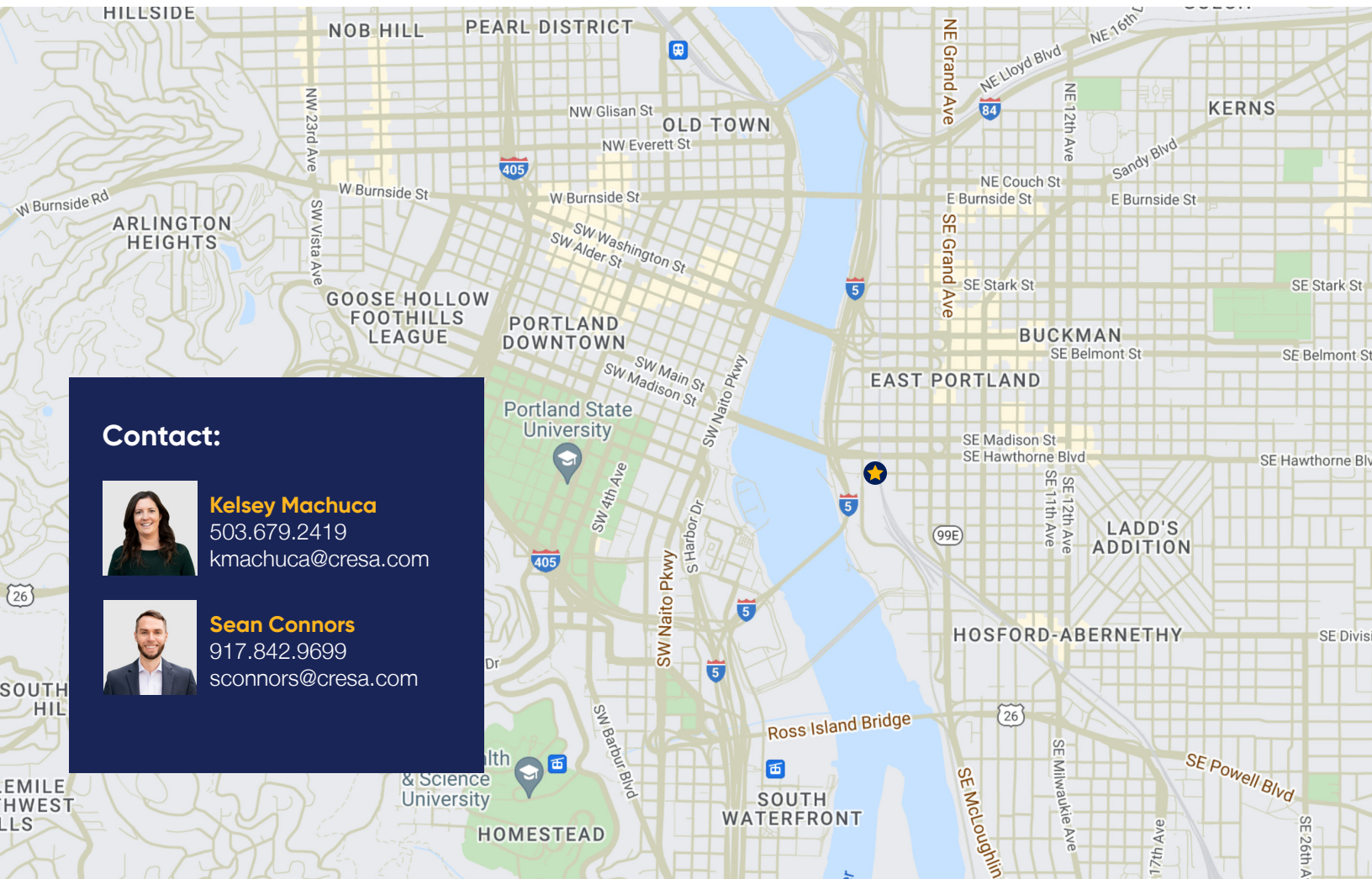
1355 NW Everett St. Suite 100 | Portland, OR 97209

[cresa.com/Portland](https://cresa.com/Portland)



## Full Building Sublease

1510 SE Water Ave  
Portland, OR 97214



### Contact:



**Kelsey Machuca**  
503.679.2419  
kmachuca@cresa.com



**Sean Connors**  
917.842.9699  
sconnors@cresa.com



Cresa © 2023. All rights reserved. The information contained in this document has been obtained from sources believed reliable. While Cresa does not doubt its accuracy, Cresa has not verified it and makes no guarantee, warranty, or representation about it. It is your responsibility to independently confirm its accuracy and completeness. Any projections, opinions, assumptions or estimates used are for example only and do not represent the current or future performance of the property. The value of this transaction to you depends on tax and other factors which should be evaluated by your tax, financial and legal advisors. You and your advisors should conduct a careful, independent investigation of the property to determine to your satisfaction the suitability of the property for your needs.