

111 Peter Street - Toronto ON

cresa

\$2.00 PSF/ Annum Co-Op Fee

Downtown West – Built Out Sublease

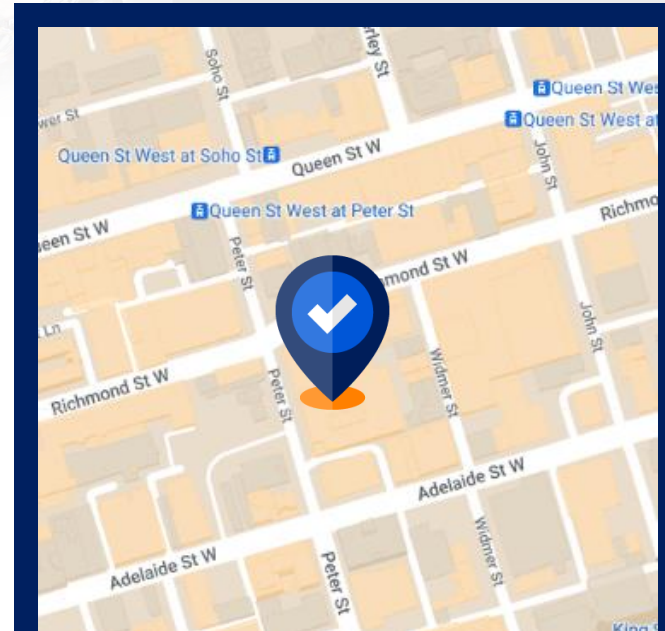
Below market rents with quality improvements

Space Profile

Premises	Suite 605
Total Rentable Area	3,656 SF
Net Rent	Contact Agent
TMI	\$22.45 (est. 2023)
Available	Immediate
Sublease Term	March 30, 2024

Features

- Corner unit that is well built out with offices and meeting areas
- 6 offices, large conference room, meeting room, storage & server areas, and open work space
- Welcoming reception and functional kitchenette
- In-suite washroom
- Furniture and wiring are available



Mark Zettel MBA, CPA, CMA

Principal,
Sales Representative
647.409.5212
mzettel@cresa.com



Adam Raithby

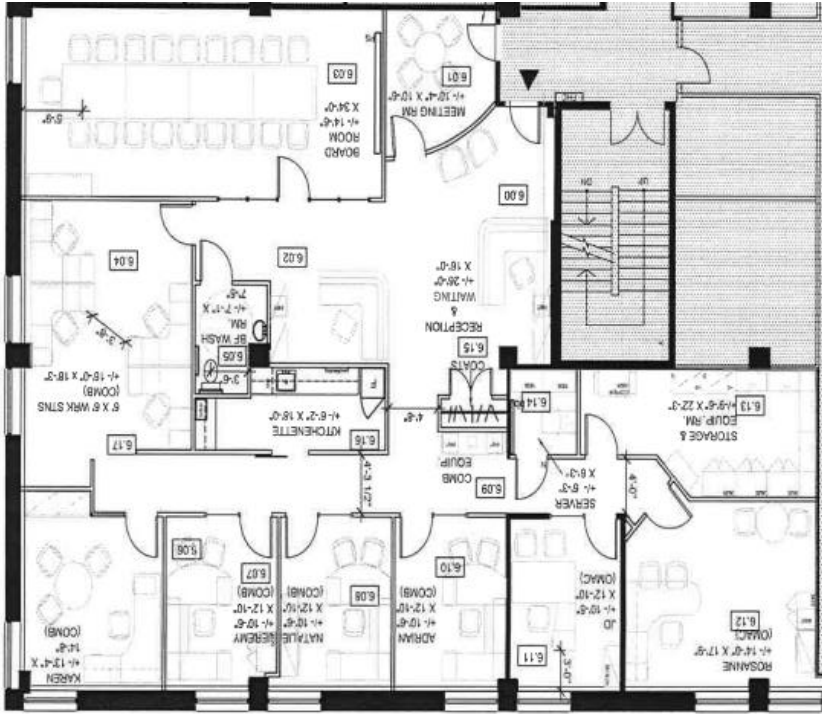
Senior Advisor,
Sales Representative
416.707.0644
araithby@cresa.com

VIEW THE VIRTUAL TOUR **360**

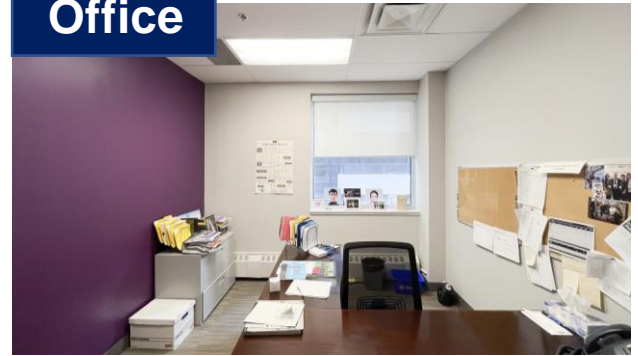
Even though obtained from sources deemed reliable, no warranty or representation, express or implied, is made as to the accuracy of the information herein, and it is subject to errors, omissions, change of price, rental or other conditions, withdrawal without notice, and to any special listing conditions imposed by our principals.

For More Information

Cresa Toronto Inc., Brokerage - 170 University Ave, Suite 1100 - Toronto, ON - M5H 3B3 - cresa.com/toronto



Office



Conference Room



Reception



Kitchen



Reception



Open Area



Mark Zettel MBA, CPA, CMA
Principal, Sales Representative
647.409.5212
mzettel@cresa.com



Adam Raithby
Senior Advisor, Sales Representative
416.707.0644
araithby@cresa.com