

Sublease Available

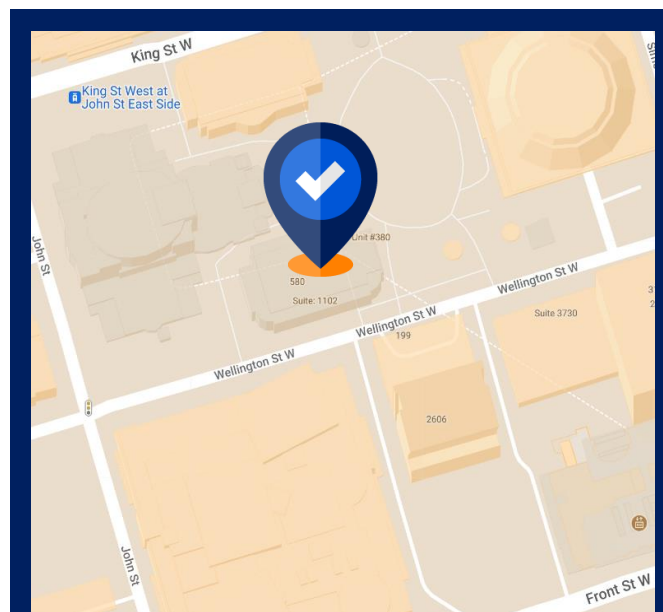
200 Wellington Street West, Toronto ON

Space Profile

Premises	Partial / Full 2nd floor
Total Rentable Area	Partial Floor: 3,695 SF (approx.) Full Floor: 11,352 SF (approx.)
Net Rate	Please Contact Agent
Additional Rent	\$32.16 (2024 est.)
Term:	Flexible, up to June 29, 2029
Available:	60-90 Days

Features

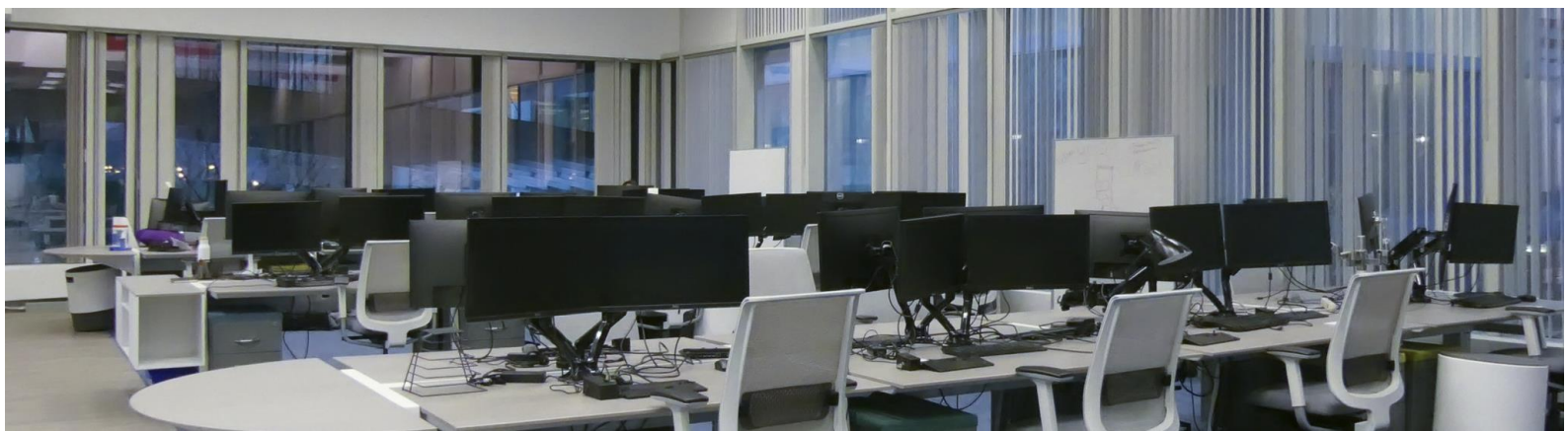
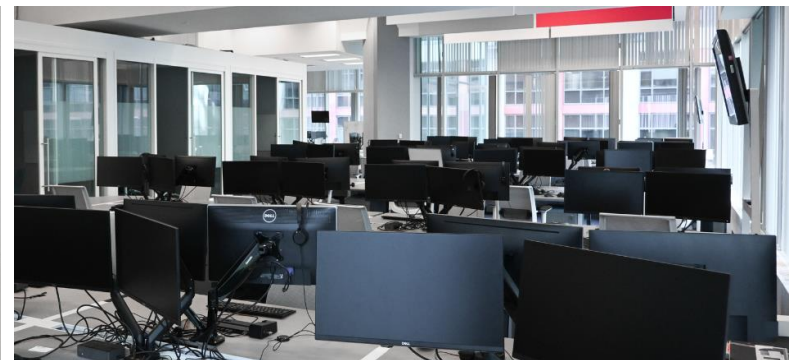
- Plug and Play sublease with 2-year-old improvements
- Incredibly efficient layout, with great mix of open plan seating and private spaces (offices or collaboration)
- Abundance of natural light
- PATH connected and a short walk to St. Andrew subway station, bordering the Financial Core and vibrant Downtown West submarkets.
- Furniture available



Mark Tittleman
Vice President,
Sales Representative
647.990.8413
mtittleman@cresa.com

VIEW THE VIRTUAL TOUR 360°

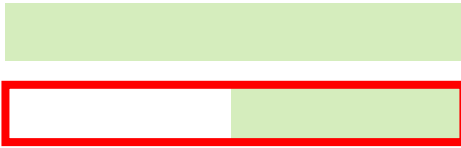
Even though obtained from sources deemed reliable, no warranty or representation, express or implied, is made as to the accuracy of the information herein, and it is subject to errors, omissions, change of price, rental or other conditions, withdrawal without notice, and to any special listing conditions imposed by our principals.



VIEW THE VIRTUAL TOUR **360°**

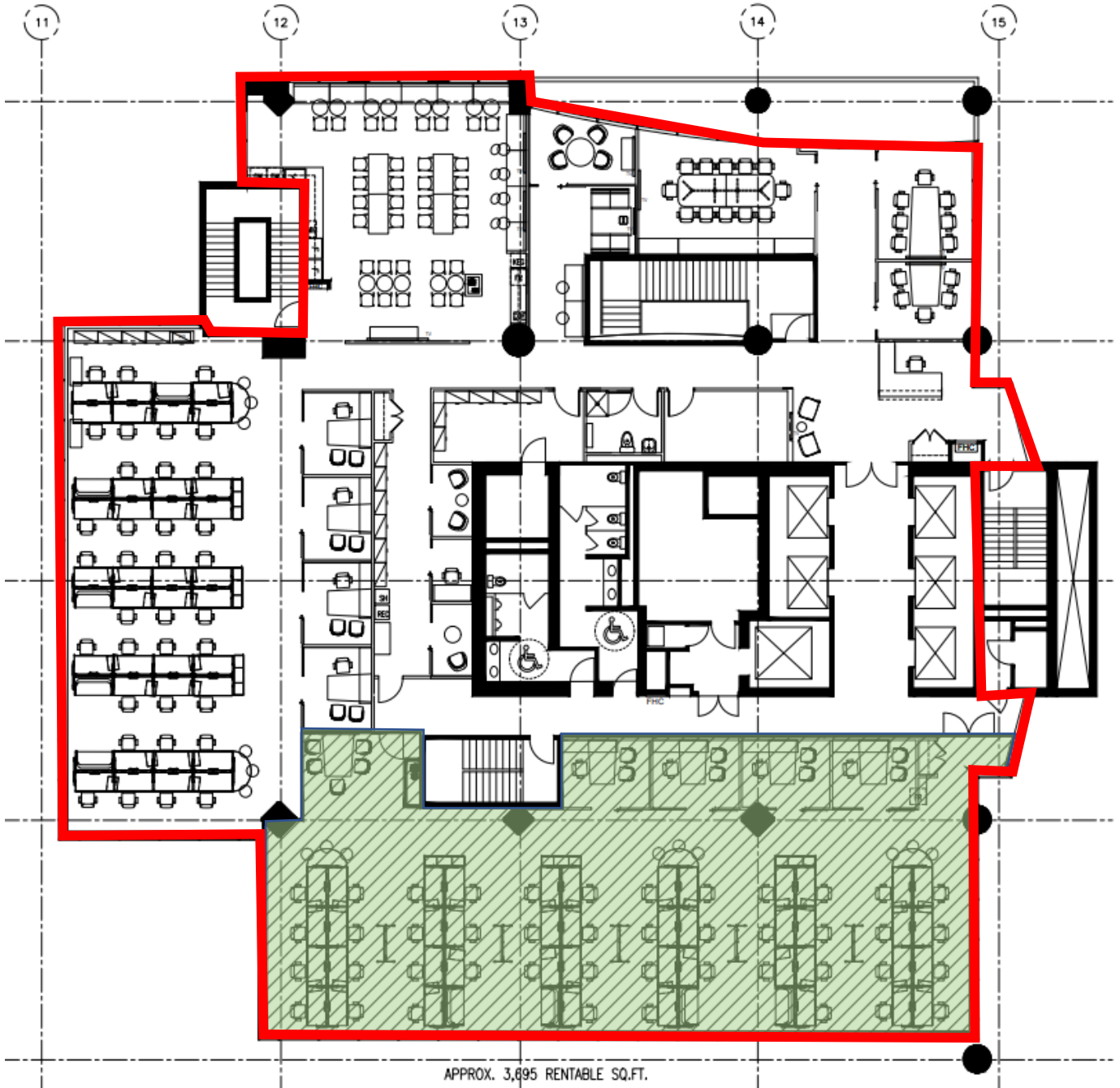


Mark Tittleman
Vice President,
Sales Representative
647.990.8413
mtittleman@cresa.com



Partial Floor: 3,695 SF (approx.)

Full Floor: 11,352 SF (approx.)



VIEW THE VIRTUAL TOUR 360°



Mark Titleman
Vice President,
Sales Representative
647.990.8413
mtitleman@cresa.com