

Sublease Available

59 King Street East Hamilton, ON

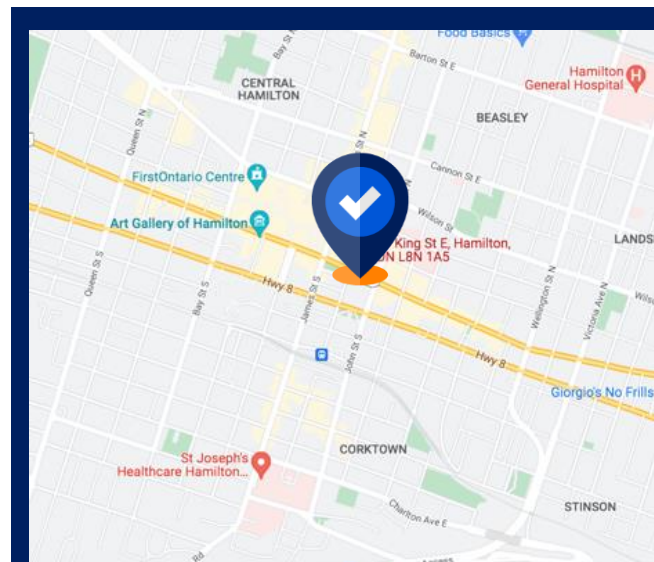
Space Profile

Premises 2nd Floor
Total Rentable Area 9,500 SF
Net Rate Call Agent to Discuss
Expiry Date March 31, 2025

Premises 4th Floor
Total Rentable Area 7,500 SF
Net Rate Call Agent to Discuss
Expiry Date August 31, 2025

Features

- Extremely rare, turnkey full-floor brick and beam opportunities
- Great mix of open and closed spaces
- Abundance of natural light
- New furniture can be made available



Mark Titleman
 Vice President, Sales Representative
 647.990.8413
 mtitleman@cresa.com



Jamie Grossman
 Managing Principal, Broker
 416.862.2670
 jgrossman@cresa.com

VIEW THE VIRTUAL TOUR 

Click for 2nd Floor
Virtual Tour

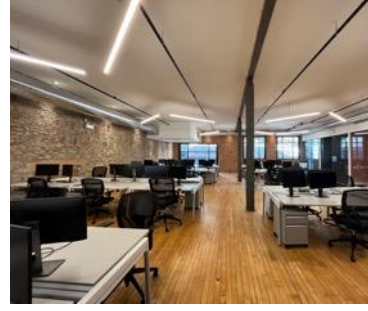
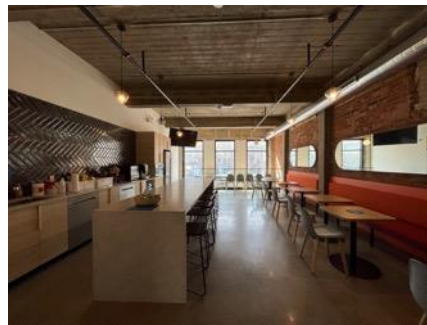
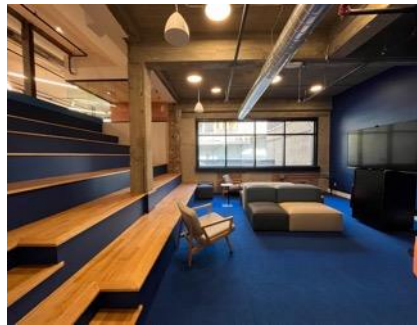
VIEW THE VIRTUAL TOUR 

Click for 4th Floor
Virtual Tour

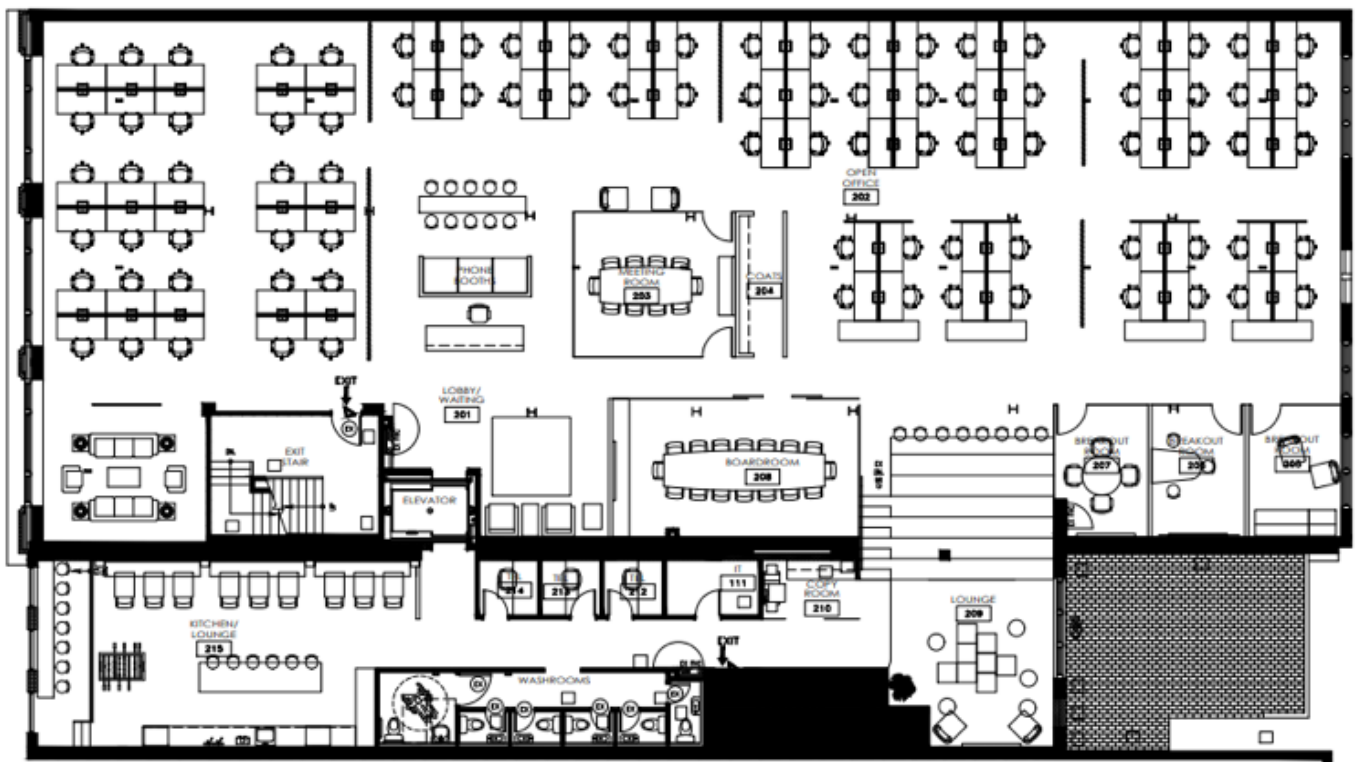
Even though obtained from sources deemed reliable, no warranty or representation, express or implied, is made as to the accuracy of the information herein, and it is subject to errors, omissions, change of price, rental or other conditions, withdrawal without notice, and to any special listing conditions imposed by our principals.

VIEW THE VIRTUAL TOUR **360**

Click for 2nd Floor Virtual Tour



88



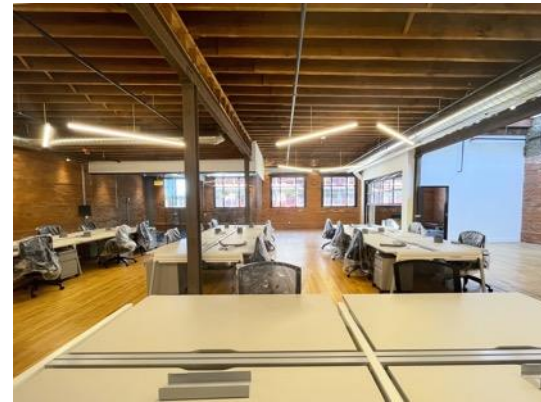
Mark Tittleman
Vice President, Sales Representative
647.990.8413
mtittleman@cresa.com



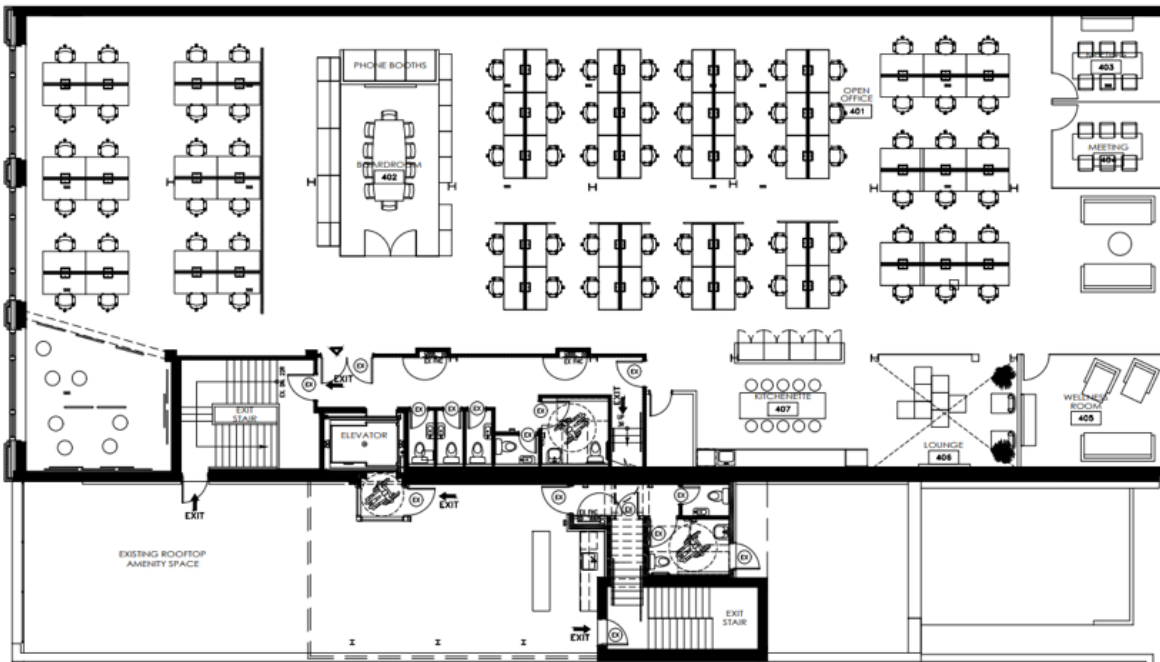
Jamie Grossman
Managing Principal, Broker
416.862.2670
jgrossman@cresa.com

VIEW THE VIRTUAL TOUR **360**

Click for 4th Floor Virtual Tour



82



Mark Tittleman
 Vice President, Sales Representative
 647.990.8413
 mtittleman@cresa.com



Jamie Grossman
 Managing Principal, Broker
 416.862.2670
 jgrossman@cresa.com