



# Sublease Available

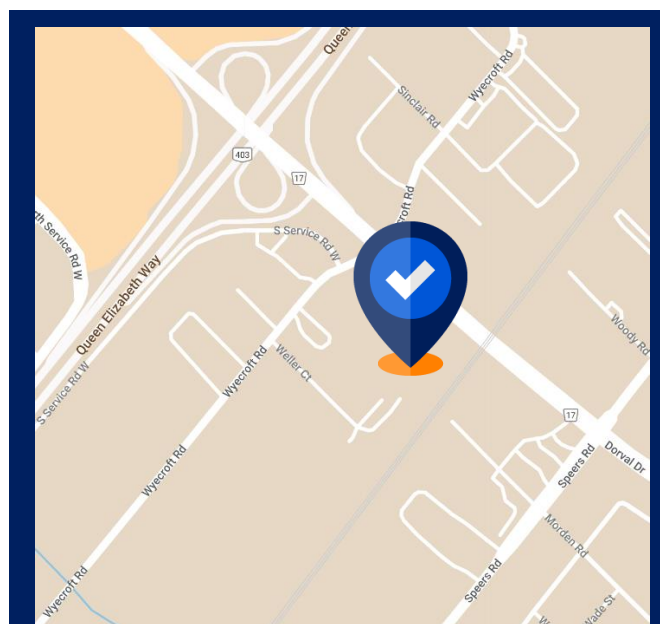
## 690 Dorval Drive, Oakville ON

### Space Profile

<b>Premises</b>	Suite 425
<b>Total Rentable Area</b>	6,100 SF
<b>Net Rate</b>	Please Contact Agent
<b>Additional Rent</b>	\$14.85 PSF
<b>Term:</b>	December 31 <sup>st</sup> , 2025
<b>Available:</b>	Immediate

### Features

- Recently renovated space with loads of natural light, located on the fourth floor of the Oakville Corporate Centre
- 34 workstations
- 8 private offices
- 1 quiet room
- 1 kitchenette
- 1 printer/storage room
- 1 large boardroom



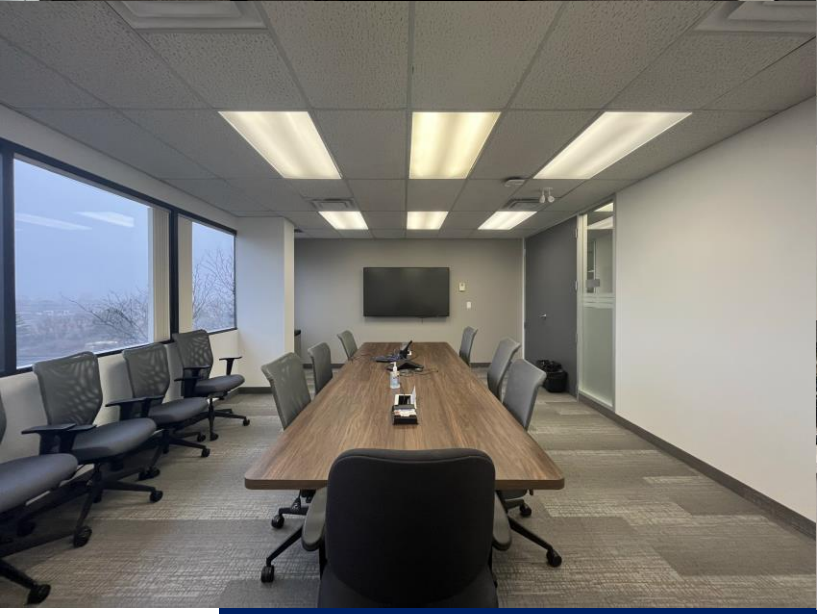
**Dean Newman**  
Principal, Broker  
647.286.7171  
dnewman@cresa.com

VIEW THE  
VIRTUAL TOUR



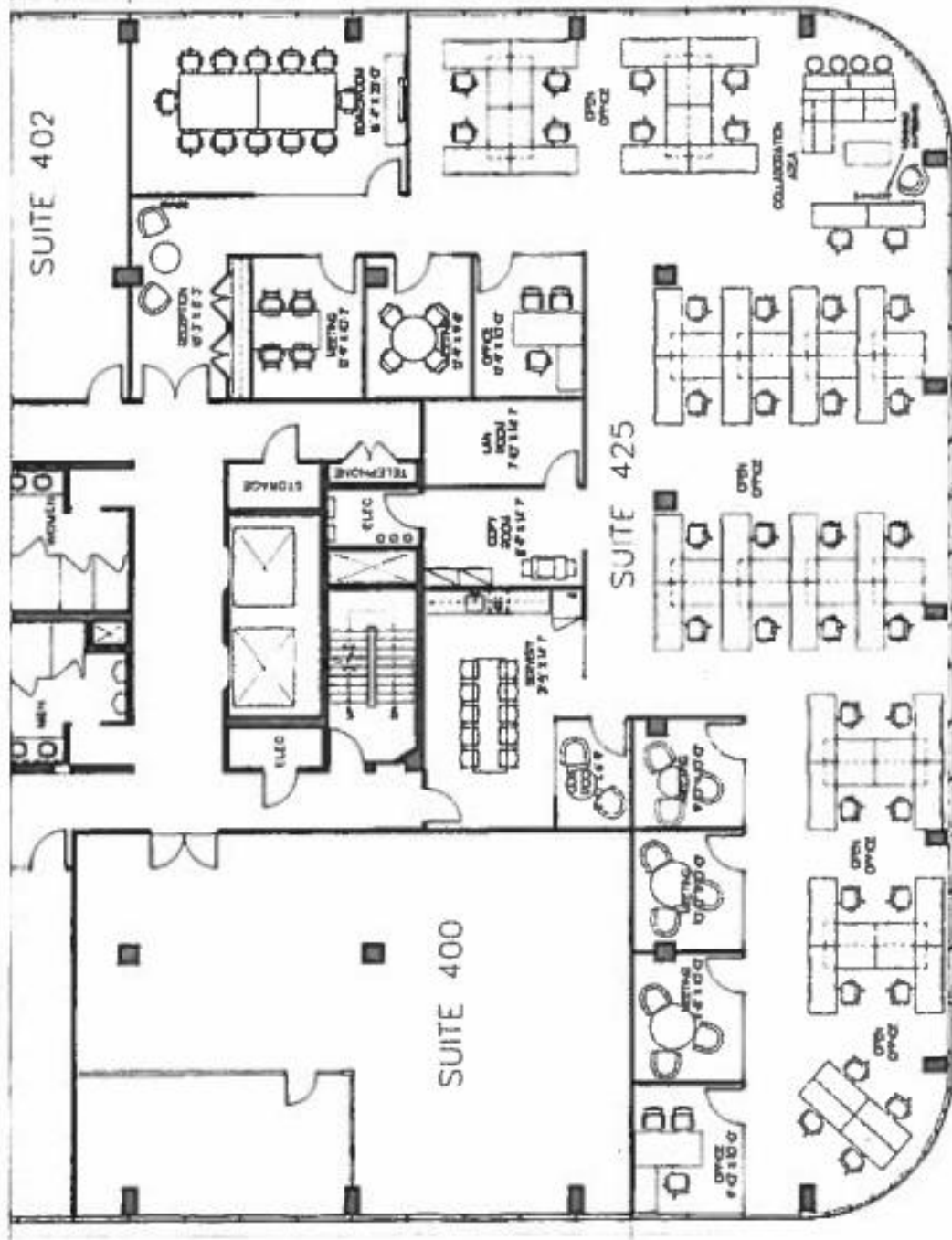
Even though obtained from sources deemed reliable, no warranty or representation, express or implied, is made as to the accuracy of the information herein, and it is subject to errors, omissions, change of price, rental or other conditions, withdrawal without notice, and to any special listing conditions imposed by our principals.





690 Dorval Drive, Oakville ON



**Dean Newman**  
Principal, Broker  
647.286.7171  
dnewman@cresa.com





				<b>OAKVILLE PLACE</b>
50m	400m	1.5km	2.5km	2.0km
Oakville Transit Routes 10, 28	403 Highway	Oakville Go Transit	Downtown Oakville	Shopping Mall

