

**Large Private
Terrace
&
5% Cooperating
Broker Fee**

**1140 19th Street, NW
Washington, DC**

**Sublease
Available**

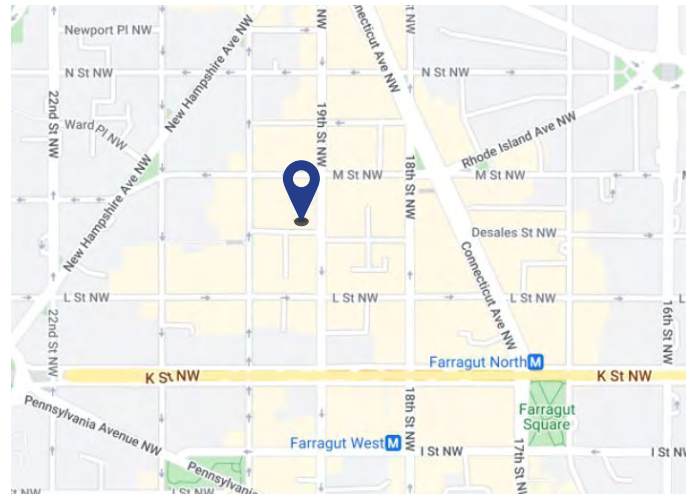
Space Profile

Premises	5,967 RSF on the 5th Floor
Rental Rate	\$45.00/SF, Full Service
Availability	120 Days
Term	Through January 31, 2027

Features

- 5 Windowed Offices, 11 Workstations
- Large, Private Terrace
- Excellent Condition
- Fully Furnished
- Elevator Exposure
- Building Fitness Center, Conference Facility and Tenant Lounge coming 2023

Map



For More Information

Cresa
1800 M Street, NW
Suite 300N
Washington, DC 20036
cresa.com/washingtondc



Josh Freedenberg
202.783.3891
jfreedenberg@cresa.com



Dan Silverman
202.688.3259
dsilverman@cresa.com

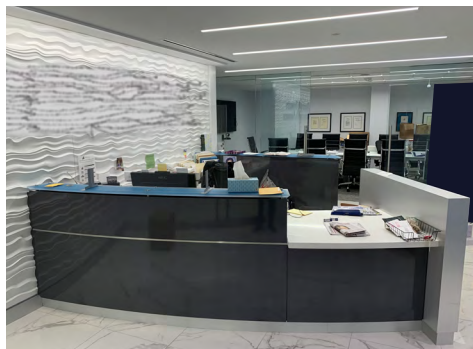
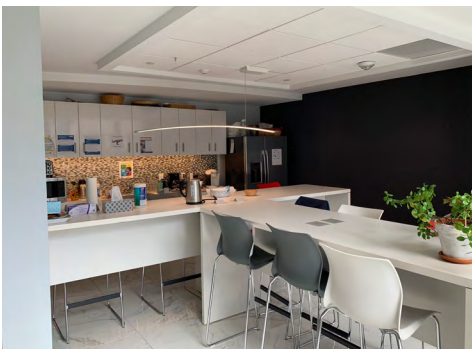
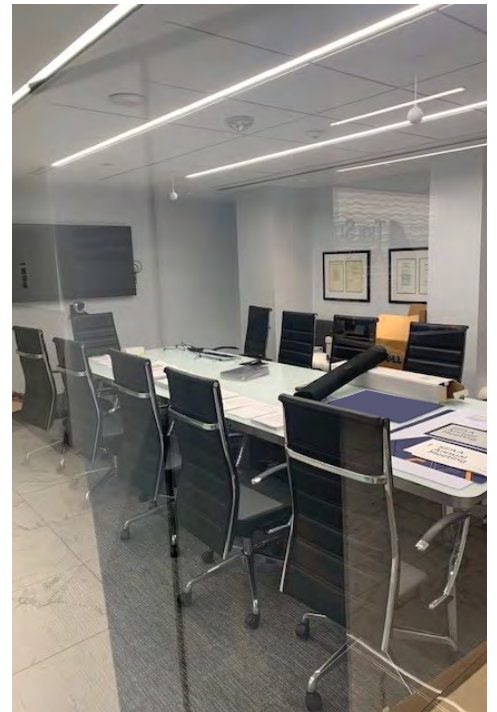
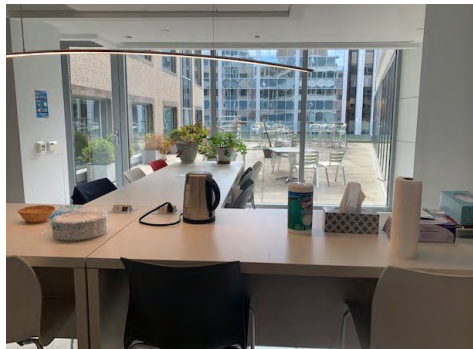
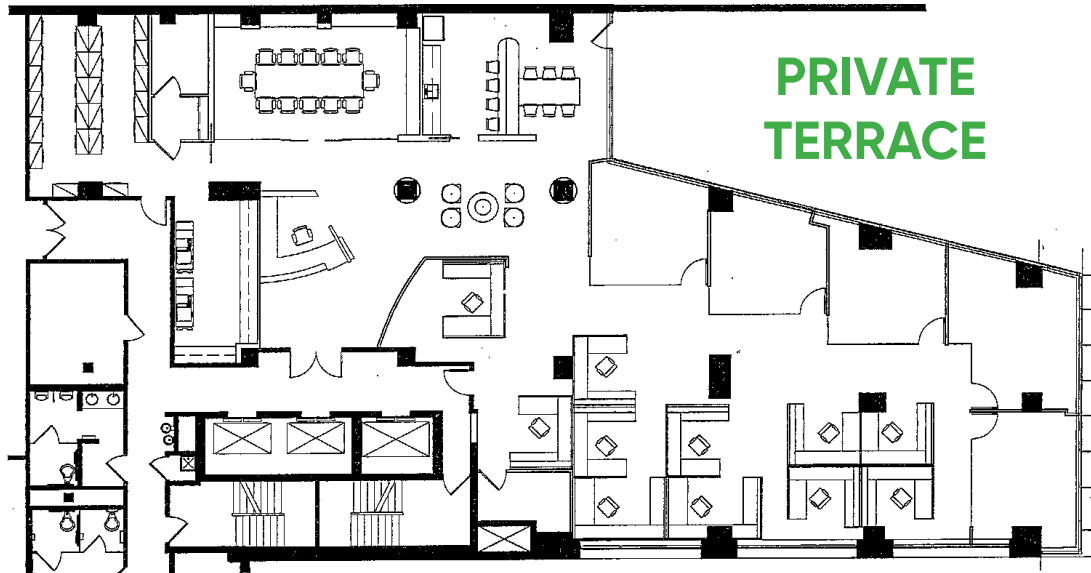
Even though obtained from sources deemed reliable, no warranty or representation, express or implied, is made as to the accuracy of the information herein, and it is subject to errors, omissions, change of price, rental or other conditions, withdrawal without notice, and to any special listing conditions imposed by our principals.

cresa



1140 19th Street, NW
Washington, DC

5th Floor - 5,967 SF



For More Information

Cresa
1800 M Street, NW
Suite 300N
Washington, DC 20036
cresa.com/washingtondc



Josh Freedenberg
202.783.3891
jfreedenberg@cresa.com



Dan Silverman
202.688.3259
dsilverman@cresa.com