

# 3.69 AC Light Industrial for Sublease



## Stover Drive, Carlisle, PA 17015

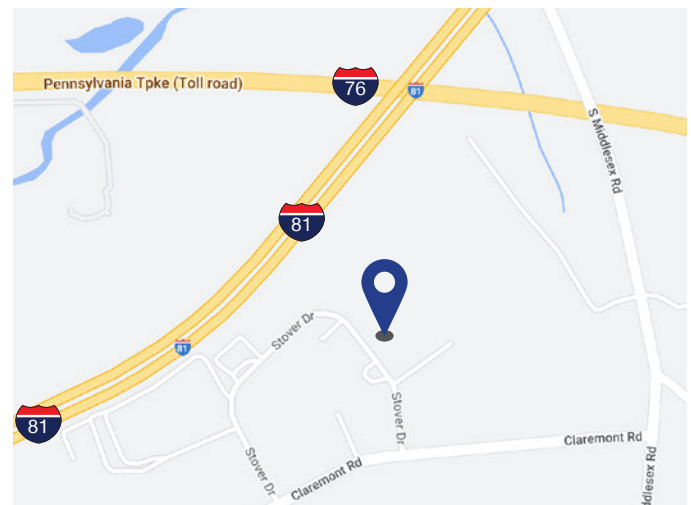
### Sublease Summary

Pricing	Please Inquire
Term	Through December 2027
Available Spaces	±100 trailer spaces
Lot Size	3.69 Acres
Zoning	Light Industrial
Utilities	Available
Yard Base	Gravel
Access	Claremont Road
Frontage	I-81
Note	Yard is fully fenced and secured

### Property Overview

**Rare opportunity to lease a light industrial trailer or equipment drop lot near the I-81 and I-76 (PA Turnpike) interchange. Less than 3 miles to I-76 access, and less than 1 mile to I-81 access.**

### Map



1 Fayette Street, Suite 100  
Conshohocken, PA 19428

#### Eric Zahniser

267.401.9770 mobile  
610.825.9298 direct  
ezahniser@cresa.com

#### Chris Aitken

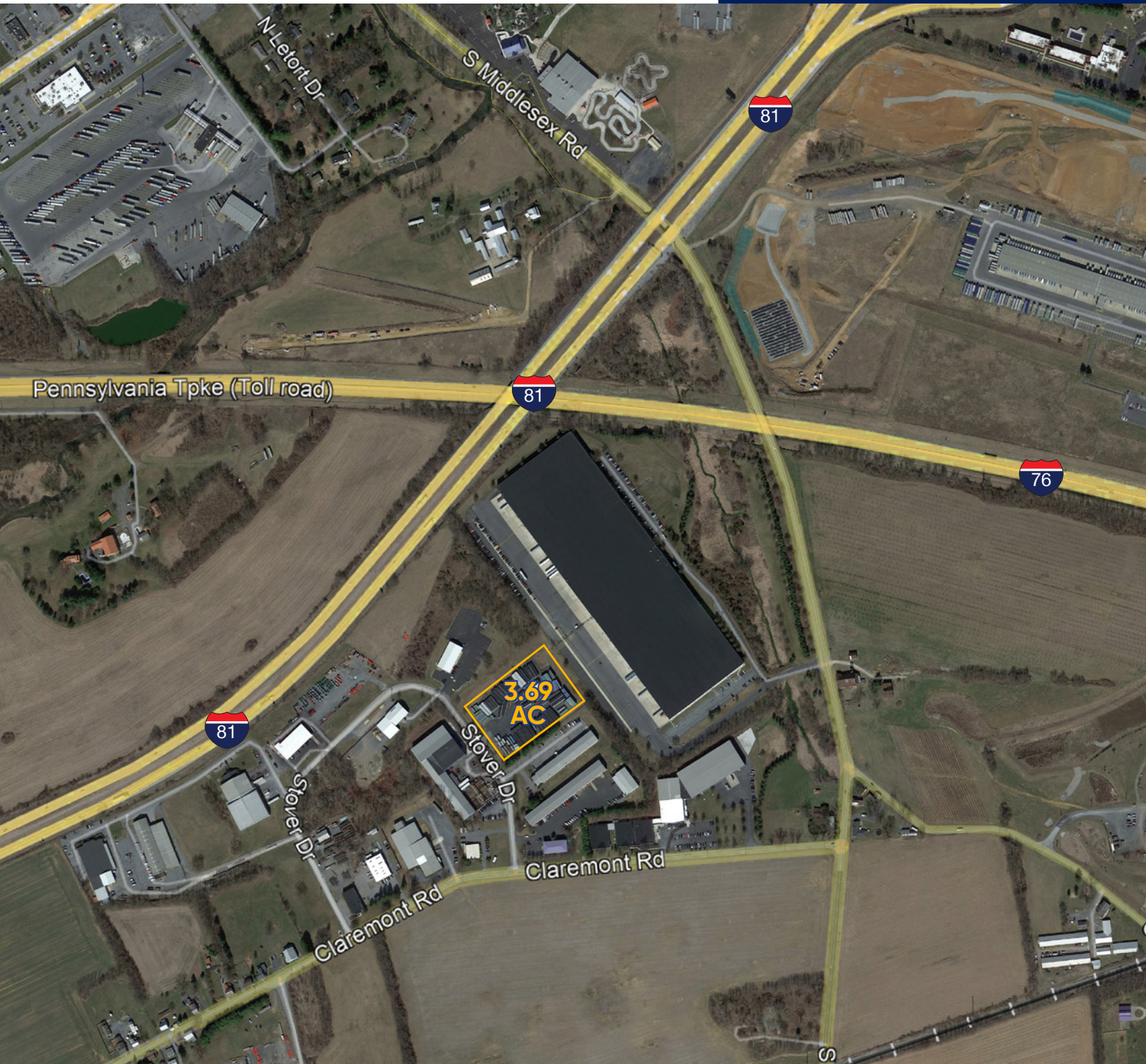
610.639.2099 mobile  
484.243.0002 direct  
caitken@cresa.com

#### Gladys Cabrera

203.858.5474 mobile  
gcabrera@cresa.com

# Sublease

Stover Drive  
Carlisle, PA 17015



**Eric Zahniser**

267.401.9770 mobile  
610.825.9298 direct  
ezahniser@cresa.com

**Chris Aitken**

610.639.2099 mobile  
484.243.0002 direct  
caitken@cresa.com

**Gladys Cabrera**

203.858.5474 mobile  
gcabrera@cresa.com

Cresa © 2024. All rights reserved. The information contained in this document has been obtained from sources believed reliable. While Cresa does not doubt its accuracy, Cresa has not verified it and makes no guarantee, warranty, or representation about it. It is your responsibility to independently confirm its accuracy and completeness. Any projections, opinions, assumptions or estimates used are for example only and do not represent the current or future performance of the property. The value of this transaction to you depends on tax and other factors which should be evaluated by your tax, financial and legal advisors. You and your advisors should conduct a careful, independent investigation of the property to determine to your satisfaction the suitability of the property for your needs.