

70 E. 91st Street  
Indianapolis, IN 46260



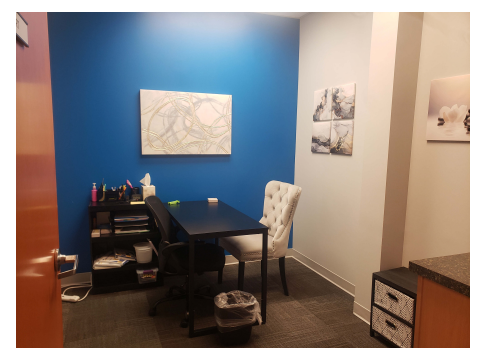
Sublease Available

## Space Profile

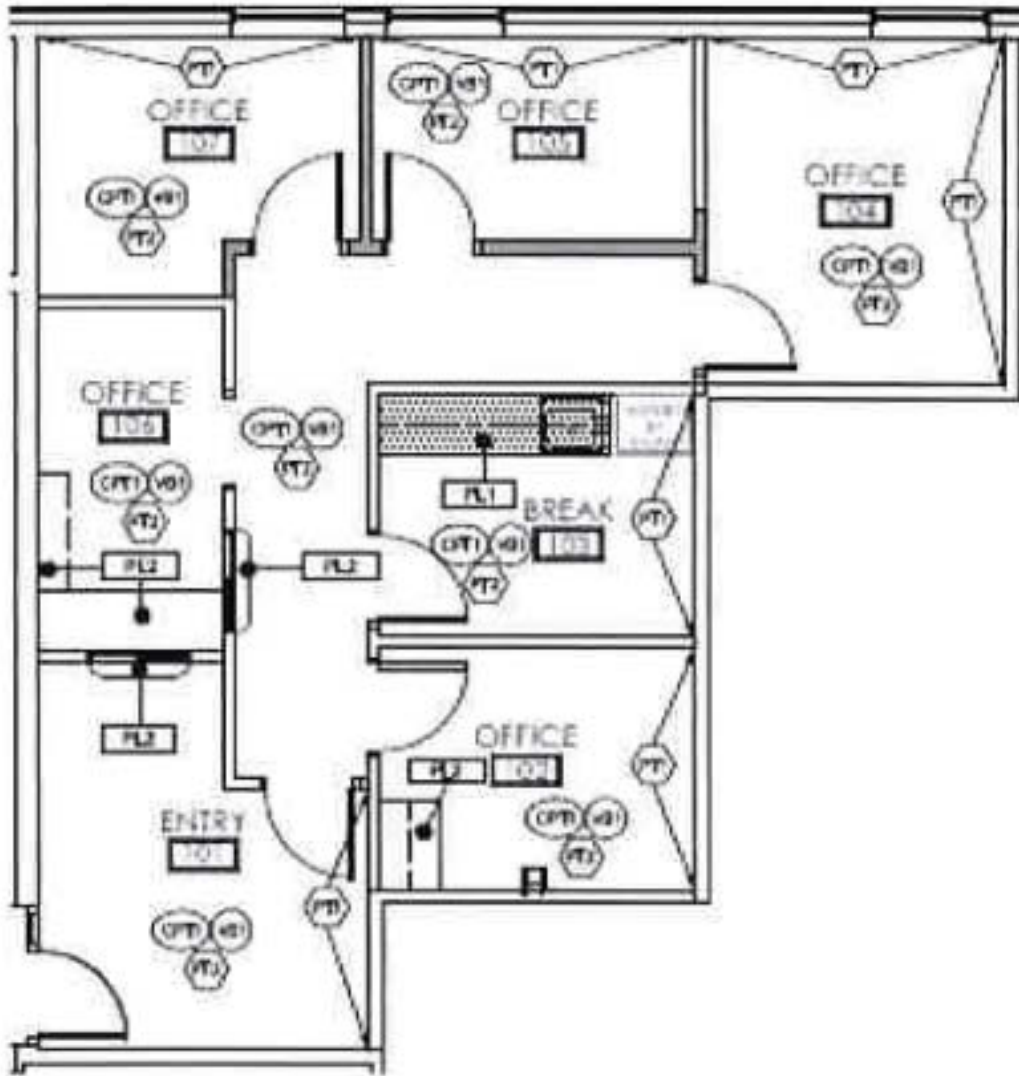
<b>Space</b>	Suite 101
<b>RSF</b>	964 RSF
<b>Rental Rate</b>	\$21.50 FSG
<b>Availability</b>	Immediate
<b>Term</b>	Exp 07/31/2026

## Space Features

- 3 minutes from I-465 & N. Meridian
- Furniture negotiable
- Move-In Ready Condition
- Building locally owned and managed



Floorplan: 964 RSF



For More Information

**Cresa**  
Leslie Teskey

Managing Principal  
317.695.6925  
lteskey@cresa.com

Tim O'Brien  
Managing Principal  
317.590.1033  
tobrien@cresa.com